



## Installation Instructions

### NOTE

Items included in Repair Kit 02-600-049 are to be used to service Power Units 20-410-005, 20-410-006, 20-410-009, 20-410-010, 20-410-014 and 10-410-015. See other side of this sheet to service 20-410-009 & 20-410-010.

**Models:** 20-410-005    20-410-014  
              20-410-006    20-410-015

### DISASSEMBLY PROCEDURE

(Refer to Figure 1)

1. Remove breather plug (4) from 690/691 Power Unit and completely drain reservoir of fluid. Discard breather plug (4).
2. Remove washer head screw (1) and reservoir cup (3) from power unit assembly (6) and discard.
3. Remove gasket (5) from power unit assembly (6) and discard.

### ASSEMBLY PROCEDURE

(Refer to Figure 1)

BE SURE THE INSIDE OF NEW RESERVOIR CUP (3) IS COMPLETELY CONTAMINANT FREE. LUBRICATE NEW O-RING (2) AND NEW GASKET (5) WITH CLEAN TYPE FLUID USED IN THE 690/691 POWER UNIT RESERVOIR.

1. Install new o-ring (2) on new washer head screw (1) so it is tight against the washer head.
2. Install new gasket (5) on power unit assembly (6).
3. Position new reservoir cup (3) on power unit assembly (6) so filler hole is located at the top position. Install new washer head screw (1) and torque 4.5-5.7 N·m (40-50 lb·in).
4. Fill the 690/691 Power Unit reservoir with proper fluid and install new breather plug (4). Torque breather plug (4) 2.0-3.4 N·m (18-30 lb·in).

- Items included in Repair Kit 02-600-049

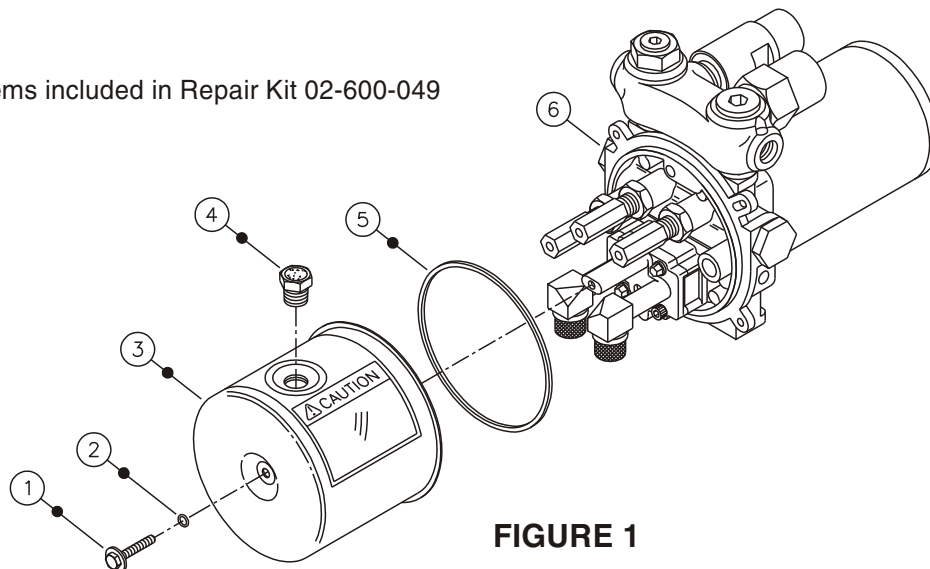


FIGURE 1

This publication is not subject to any update service. Information contained in this publication was in effect at the time the publication was approved for printing and is subject to change without notice or liability. ZF Off-Highway Solutions Minnesota Inc. reserves the right to revise the information presented or to discontinue the production of parts described at any time.



Models: 20-410-009  
20-410-010

## DISASSEMBLY PROCEDURE

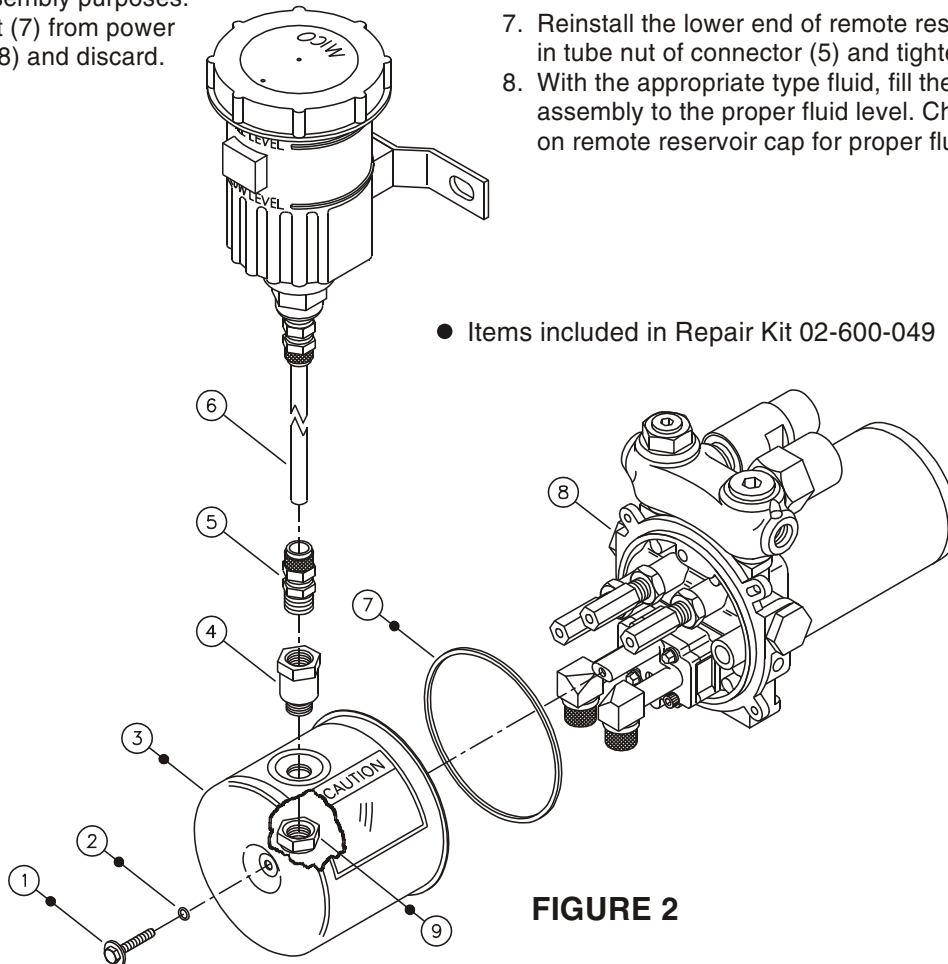
(Refer to Figure 2)

1. **NOTE: Be prepared to drain entire fluid content of remote reservoir in this step.** Loosen the tube nut on connector (5), remove lower end of tubing from connector (5) and drain remote reservoir fluid.

### NOTE

Connector (5) and adapter (4) need not be separated during these procedures. Do not attempt to remove connector/adapter from reservoir cup (3) until nut (9) has been removed.

2. Completely drain 690/691 Power Unit reservoir of fluid.
3. Remove washer head screw (1) and reservoir cup (3) from power unit assembly (8).
4. Remove nut (9) from inside of reservoir cup (3) and discard.
5. Remove adapter (4)/connector (5) from reservoir cup (3). Discard reservoir cup (3) and retain adapter/connector for reassembly purposes.
6. Remove gasket (7) from power unit assembly (8) and discard.



- Items included in Repair Kit 02-600-049

FIGURE 2

## ASSEMBLY PROCEDURE

(Refer to Figure 2)

BE SURE THE INSIDE OF NEW RESERVOIR CUP (3) IS COMPLETELY CONTAMINANT FREE. LUBRICATE NEW O-RING (2) AND NEW GASKET (7) WITH CLEAN TYPE SILICONE FLUID USED IN THE 690/691 POWER UNIT RESERVOIR.

1. Screw adapter (4)/connector (5) into new reservoir cup (3) and torque 2.0-3.4 N·m (18-30 lb-in).
2. Install new nut (9) on adapter (4) on the inside of reservoir cup (3) and torque 17.0 N·m (150 lb-in).
3. Install new o-ring (2) on new washer head screw (1) so it is tight against the washer head.
4. Install new gasket (7) on power unit assembly (8).
5. Position new reservoir cup (3) on power unit assembly (8) so adapter (4)/connector (5) is located at the top position. Install new washer head screw (1) and torque 4.5-5.7 N·m (40-50 lb-in).
6. Fill 690/691 Power Unit reservoir with appropriate fluid type before attaching remote reservoir tubing.

### CAUTION

To avoid damaging power unit pump the power unit reservoir must be filled before attaching tubing.

7. Reinstall the lower end of remote reservoir tubing (6) in tube nut of connector (5) and tighten.
8. With the appropriate type fluid, fill the remote reservoir assembly to the proper fluid level. Check caution label on remote reservoir cap for proper fluid type.