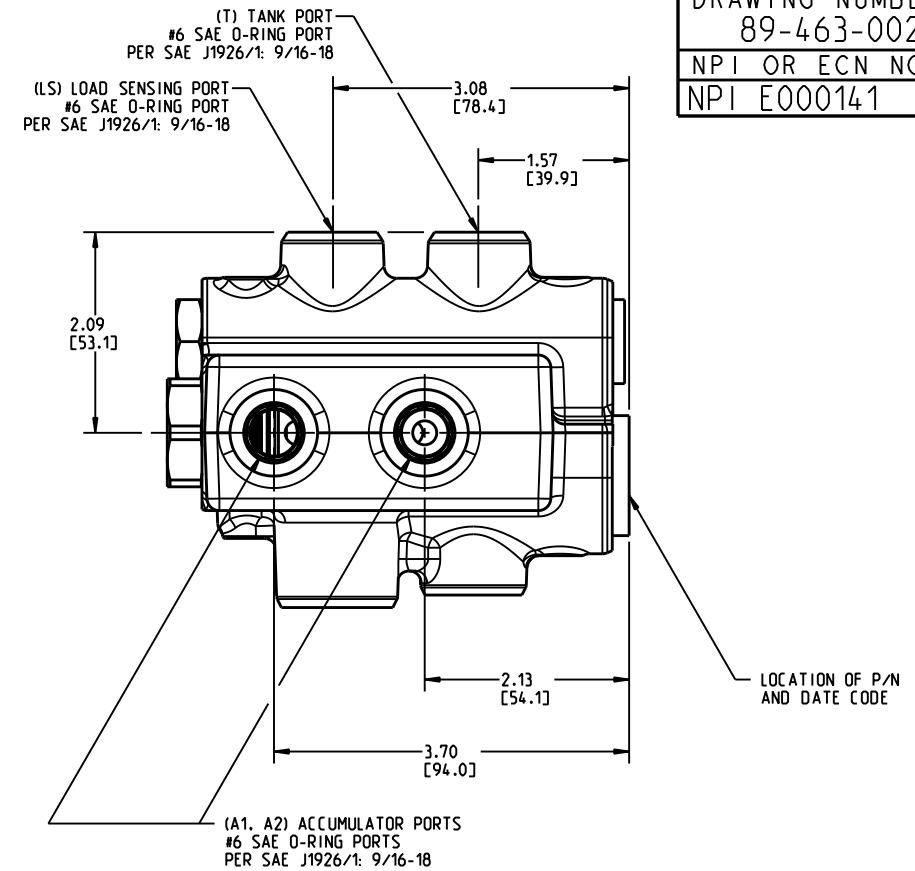
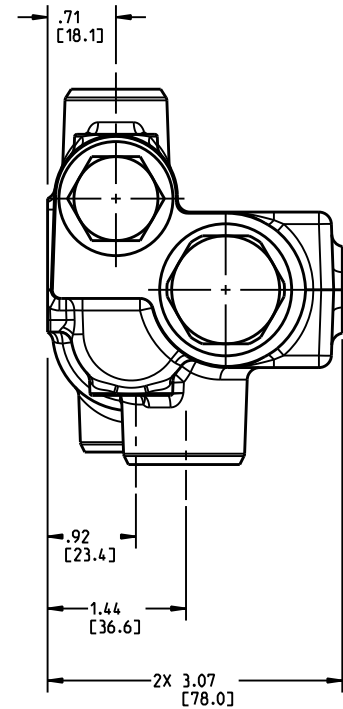
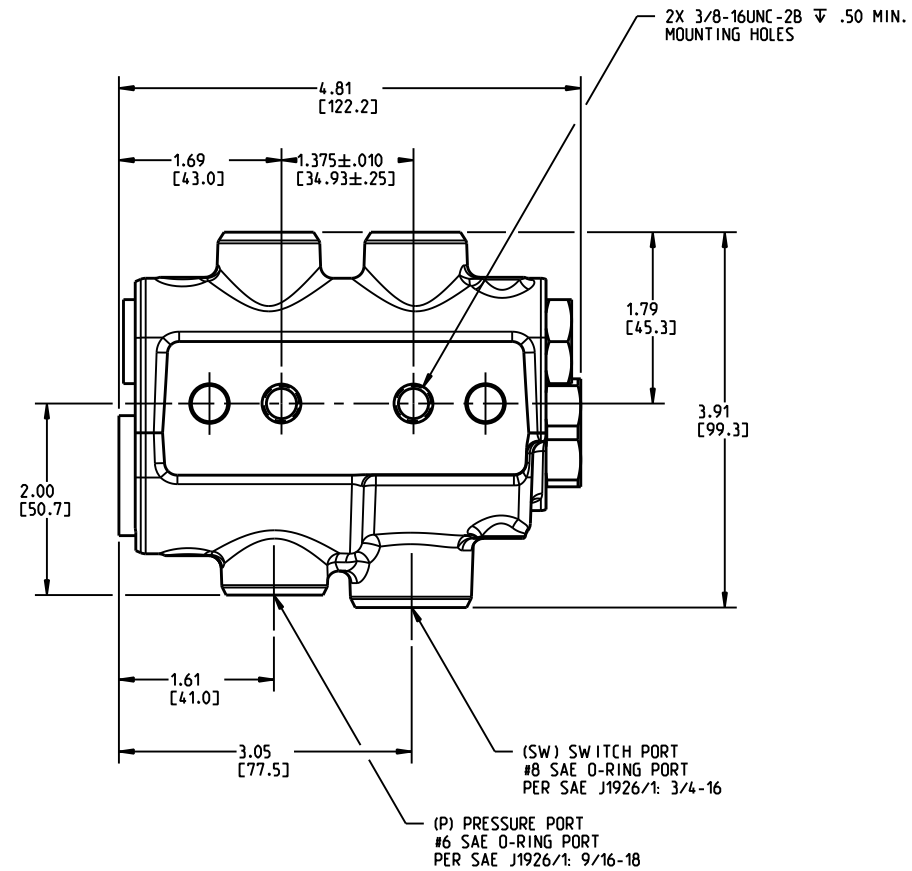
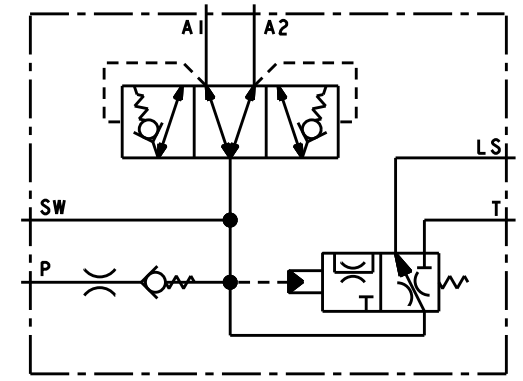


DRAWING NUMBER
89-463-002
NPI OR ECN NO
NPI E000141



PART NUMBER	REVISION	DESCRIPTION	ALLOWABLE SYSTEM RELIEF VALVE PRESSURE (PSI [bar])	ACCUMULATOR CHARGING LOW LIMIT (PSI [bar])	ACCUMULATOR CHARGING HIGH LIMIT (PSI [bar])	ACCUMULATOR CHARGE RATE (GPM [LPM])	PUMP MUST CONTAIN BLEED DOWN ORIFICE	REPAIR KIT P/N	SURFACE COATING
06-463-100	M	ACV-DMN-LSB-55-78-6	2175±825 [150±56.9]	800±50 [55.2±3.4]	1125±25 [77.6±1.7]	1.5±0.5 [5.7±1.9]	NO	06-400-107	OLIVE DRAB PRIMER PER DOD-P-15328
06-463-118	G	ACV-DMN-LS-128-159-6	2775±225 [191.3±15.5]	1850±50 [127.6±3.4]	2300±50 [158.6±3.4]	1.5±0.5 [5.7±1.9]	YES	06-400-107	OLIVE DRAB PRIMER PER DOD-P-15328
06-463-126	D	ACV-DMN-LS-86-114-6	2475±525 [170.7±36.2]	1250±50 [86.2±3.4]	1650±50 [113.8±3.4]	1.5±0.5 [5.7±1.9]	YES	06-400-107	OLIVE DRAB PRIMER PER DOD-P-15328
06-463-128	E	ACV-DMN-LS-155-190-16	3250±250 [224.1±17.2]	2250±50 [155.1±3.4]	2750±50 [189.6±3.4]	4.25±0.75 [16.1±2.8]	YES	06-400-107	OLIVE DRAB PRIMER PER DOD-P-15328
06-463-144	E	ACV-DMN-LS-166-200-11U	3300±200 [227.5±13.8]	2400±50 [165.5±3.4]	2900±50 [200±3.4]	3.0±0.5 [11.4±1.9]	YES	06-400-107	BLACK PAINT
06-463-148	C	ACV-DMN-LSB-86-114-8	2450±550 [168.9±37.9]	1250±50 [86.2±3.4]	1650±50 [113.8±3.4]	2.5±0.5 [9.5±1.9]	NO	06-400-107	OLIVE DRAB PRIMER PER DOD-P-15328
06-463-154	C	ACV-DMN-LSB-166-200-15U	3300±200 [227.5±13.8]	2400±50 [165.5±3.4]	2900±50 [200±3.4]	4.0±0.5 [15.1±1.9]	NO	06-400-107	BLACK PAINT
06-463-156	B	ACV-DMN-LS-128-159-13	2775±225 [191.3±15.5]	1850±50 [127.6±3.4]	2300±50 [158.6±3.4]	3.5±0.5 [13.2±1.9]	YES	06-400-107	OLIVE DRAB PRIMER PER DOD-P-15328
06-463-162	B	ACV-DMN-LS-145-176-13	2875±125 [198.2±8.6]	2100±50 [144.8±3.4]	2550±50 [175.8±3.4]	3.5±0.5 [13.2±1.9]	YES	06-400-107	OLIVE DRAB PRIMER PER DOD-P-15328
06-463-164	C	ACV-DMN-LSB-128-159-13	2950±50 [203.4±3.4]	1850±50 [127.6±3.4]	2300±50 [158.6±3.4]	3.5±0.5 [13.2±1.9]	NO	06-400-107	OLIVE DRAB PRIMER PER DOD-P-15328
06-463-172	D	ACV-DMN-LSB-79-93-6U	2350±650 [162±44.8]	1150±50 [79.3±3.4]	1350±50 [93.1±3.4]	1.5±0.5 [5.7±1.9]	NO	06-400-316	BLACK PAINT
06-463-176	B	ACV-DMN-LSB-159-184-15U	3300±200 [227.5±13.8]	2300±75 [158.6±5.2]	2675±25 [184.4±1.7]	4.0±0.5 [15.1±1.9]	NO	06-400-107	BLACK PAINT
06-463-178	C	ACV-DMN-LS-86-124-6	2475±525 [170.7±36.2]	1250±50 [86.2±3.4]	1800±50 [124.1±3.4]	1.5±0.5 [5.7±1.9]	YES	06-400-107	OLIVE DRAB PRIMER PER DOD-P-15328
06-463-184	A	ACV-DMN-LSB-128-159-13	2950±50 [203.4±3.4]	1850±50 [127.6±3.4]	2300±50 [158.6±3.4]	3.5±0.5 [13.2±1.9]	NO	06-400-107	OLIVE DRAB PRIMER PER DOD-P-15328
06-463-188	A	ACV-DMN-LSB-104-129-10	2550±450 [175.8±31.0]	1513±38 [104.3±2.6]	1875±25 [129.3±1.7]	2.7±0.5 [10.2±1.9]	NO	06-400-107	OLIVE DRAB PRIMER PER DOD-P-15328



NOTES:

- FOR USE WITH MINERAL BASE HYDRAULIC OIL ONLY.
- DIMENSIONS MAY VARY BETWEEN UNITS AND ARE FOR REFERENCE PURPOSES ONLY. MILLIMETER VALUES MAY NOT BE AN EXACT CONVERSION OF INCH VALUES.
- CHARGE VALVE REPAIR KIT P/N: SEE CHART.
- SURFACE COATING: SEE CHART.

PERFORMANCE CHARACTERISTICS:

- SYSTEM RELIEF VALVE NOT INCLUDED.
- OPERATING MARGIN OF 220 PSI [15.2 bar]. ACCUMULATOR CHARGE RATE WILL CHANGE PROPORTIONALLY WITH CHANGES IN OPERATING MARGIN.
- OPERATING TEMPERATURE RANGE: -40 TO 230 °F [-40 TO 110 °C]
- OPERATING VISCOSITY RANGE: 7 TO 2000 cSt.
- EXTERNAL FILTRATION OF 10 MICRON OR BETTER IS REQUIRED.
- 15 PSI MAXIMUM ALLOWED BACK PRESSURE AT TANK PORT. (06-463-162 ONLY)
- INGRESS PROTECTION EQUIVALENT TO IP67.

INCH
(MILLIMETER)

COMPONENT AND SYSTEM RECOMMENDATIONS MADE BY MICO, INC ARE BASED ON INFORMATION SUPPLIED BY POTENTIAL USER AND/OR SYSTEM DESIGNER. THE POTENTIAL USER AND/OR DESIGNER MUST MAKE FINAL ACCEPTANCE AND APPROVAL OF COMPONENTS AND SYSTEM AFTER TESTING PERFORMANCE ON AN ACTUAL APPLICATION FOR WHICH SYSTEM WAS DESIGNED.

MICO, INC CLAIMS PROPRIETARY RIGHTS TO THE MATERIAL DISCLOSED IN THIS DOCUMENT. THIS DOCUMENT IS PROVIDED IN CONFIDENCE AND MAY NOT BE REPRODUCED OR DISCLOSED WITHOUT WRITTEN PERMISSION FROM MICO, INC. COPYRIGHT MICO, INC. ALL RIGHTS RESERVED.

MICO
North Mankato, Minnesota USA

SCALE 0.500		TITLE ACV-DMN-LS		
DWN ETM 2012-06-27	APVD PROD ENGRG	SIZE B	DRAWING NUMBER 89-463-002	REV F
X NO	APVD ENGRG PWB 2012-06-28		CUSTOMER COPY	