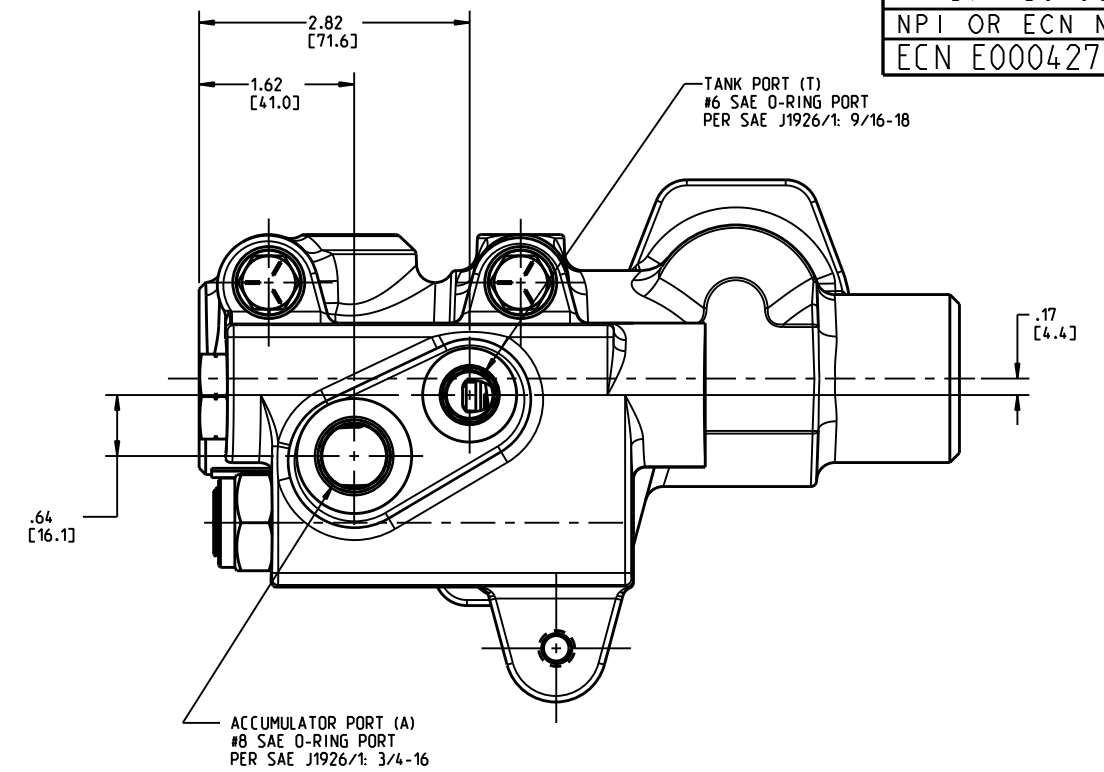
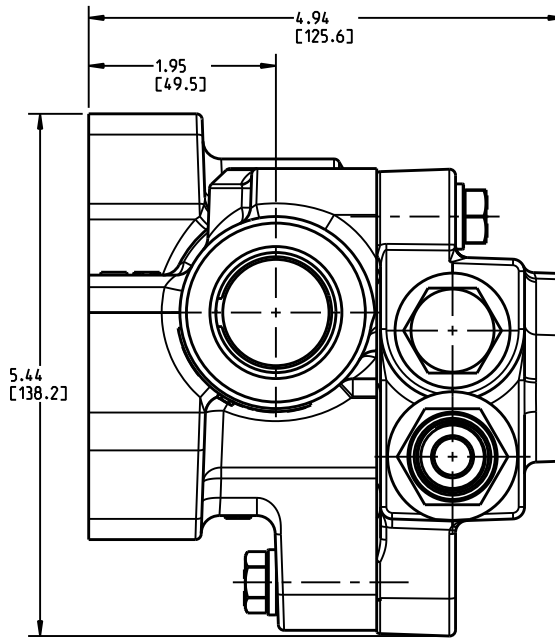
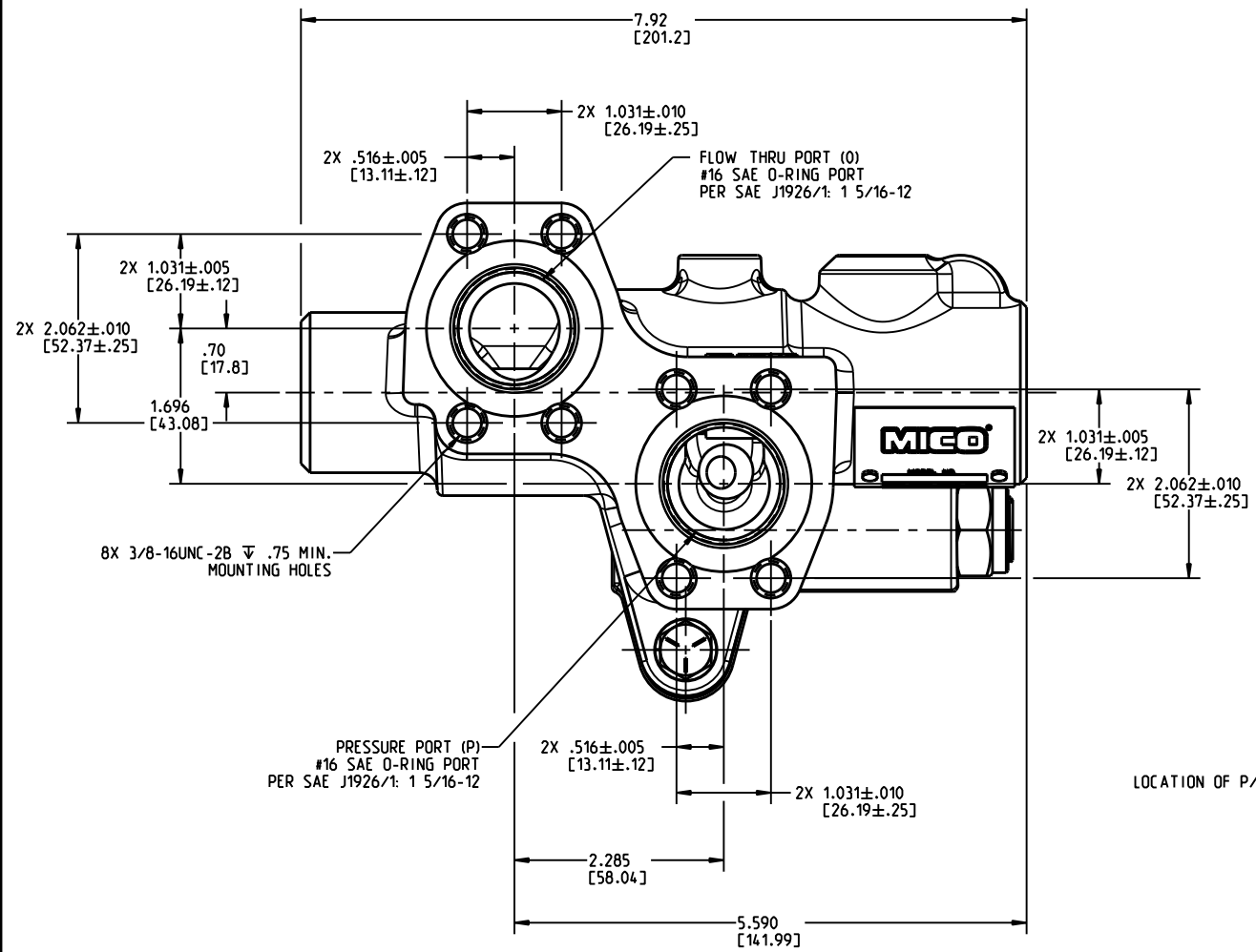
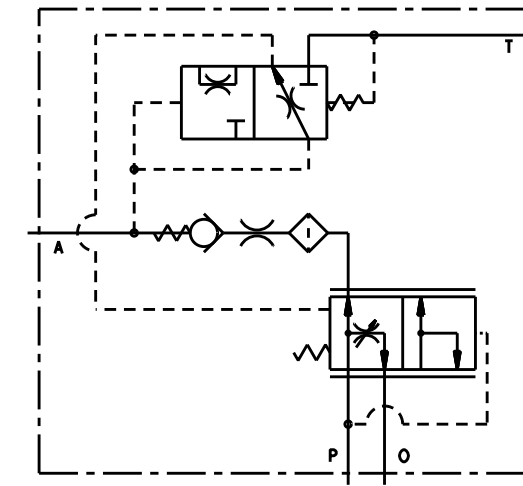
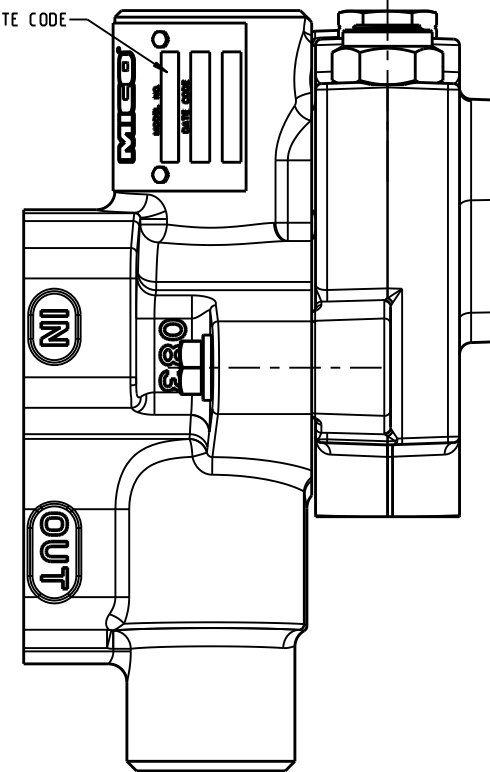


DRAWING NUMBER  
89-460-003  
NPI OR ECN NO  
ECN E000427



LOCATION OF P/N AND DATE CODE



PART NUMBER	DESCRIPTION	REVISION	ALLOWABLE SYSTEM RELIEF VALVE PRESSURE (PSI [bar])	ACCUMULATOR CHARGE LOW LIMIT (PSI [bar])	ACCUMULATOR CHARGE HIGH LIMIT (PSI [bar])	ACCUMULATOR CHARGE RATE (GPM [LPM])
06-460-201	ACV-SM013-116-145-6	C	2650±350 [182.7±24.1]	1675±75 [115.5±5.2]	2100±25 [144.8±1.7]	1.7±0.5 [6.4±1.9]
06-460-210	ACV-SM013-117-145-3	K	2650±350 [182.7±24.1]	1700±50 [117.2±3.4]	2100±25 [144.8±1.7]	.75±.25 [2.8±0.9]
06-460-212	ACV-SM013-131-159-3	H	2750±250 [189.6±17.2]	1900±50 [131.0±3.4]	2300±25 [158.6±1.7]	.75±.25 [2.8±0.9]
06-460-224	ACV-SM013-131-159-10	L	2750±250 [189.6±17.2]	1900±50 [131.0±3.4]	2300±25 [158.6±1.7]	2.6±0.6 [9.8±2.3]
06-460-226	ACV-SM013-66-83-3	G	2200±800 [151.7±55.2]	950±50 [65.5±3.4]	1200±25 [82.7±1.7]	.75±.25 [2.8±0.9]
06-460-228	ACV-SM013-55-69-3	K	2113±888 [145.7±61.2]	800±50 [55.2±3.4]	1000±25 [68.9±1.7]	.75±.25 [2.8±0.9]
06-460-244	ACV-SM013-83-103-3	E	2350±650 [162.0±44.8]	1200±50 [82.7±3.4]	1500±25 [103.4±1.7]	.75±.25 [2.8±0.9]
06-460-248	ACV-SM013-116-145-6	D	2650±350 [182.7±24.1]	1675±75 [115.5±5.2]	2100±25 [144.8±1.7]	1.7±0.5 [6.4±1.9]
06-460-254	ACV-SM013-83-103-6	D	2350±650 [162.0±44.8]	1200±50 [82.7±3.4]	1500±25 [103.4±1.7]	1.7±0.5 [6.4±1.9]
06-460-270	ACV-SM013-110-138-6	E	2600±400 [179.3±27.6]	1600±50 [110.3±3.4]	2000±25 [137.9±1.7]	1.7±0.5 [6.4±1.9]
06-460-276	ACV-SM013-83-103-10	F	2350±650 [162.0±44.8]	1200±50 [82.7±3.4]	1500±25 [103.4±1.7]	2.6±0.6 [9.8±2.3]
06-460-280	ACV-SM013-103-129-10	F	2538±463 [175.0±31.9]	1500±25 [103.4±1.7]	1875±50 [129.3±3.4]	2.6±0.6 [9.8±2.3]
06-460-286	ACV-SM013-83-105-10	D	2350±650 [162.0±44.8]	1200±50 [82.7±3.4]	1525±25 [105.1±1.7]	2.6±0.6 [9.8±2.3]

INCH  
[MILLIMETER]

**NOTES:**

- FOR USE WITH MINERAL BASE HYDRAULIC OIL ONLY.
- DIMENSIONS MAY VARY BETWEEN UNITS AND ARE FOR REFERENCE PURPOSES ONLY. MILLIMETER VALUES MAY NOT BE AN EXACT CONVERSION OF INCH VALUES.
- REPAIR KIT P/N: 06-400-084
- SURFACE COATING: OLIVE DRAB PRIMER PER DOD-P-15328 SPECIFICATION.
- MATING MANIFOLD SURFACE TO BE FLAT WITHIN .0004.

**PERFORMANCE CHARACTERISTICS:**

- SYSTEM RELIEF VALVE NOT INCLUDED.
- RECOMMENDED SYSTEM FLOW IS 2 TO 35 GPM [8 TO 132 LPM].
- FLOW THRU PRESSURE DROP IS APPROXIMATELY 20 PSI [1 BAR] AT 35 GPM [132 LPM] WITH 14 CENTISTOKE OIL.
- INTERNAL FILTRATION IS 54 MICRON OR BETTER.
- EXTERNAL FILTRATION OF 10 MICRON OR BETTER IS RECOMMENDED.



COMPONENT AND SYSTEM RECOMMENDATIONS MADE BY MICO, INC ARE BASED ON INFORMATION SUPPLIED BY POTENTIAL USER AND/OR SYSTEM DESIGNER. THE POTENTIAL USER AND/OR DESIGNER MUST MAKE FINAL ACCEPTANCE AND APPROVAL OF COMPONENTS AND SYSTEM AFTER TESTING PERFORMANCE ON AN ACTUAL APPLICATION FOR WHICH SYSTEM WAS DESIGNED.

MICO, INC CLAIMS PROPRIETARY RIGHTS TO THE MATERIAL DISCLOSED IN THIS DOCUMENT. THIS DOCUMENT IS PROVIDED IN CONFIDENCE AND MAY NOT BE REPRODUCED OR DISCLOSED WITHOUT WRITTEN PERMISSION FROM MICO, INC. COPYRIGHT MICO, INC. ALL RIGHTS RESERVED.

SCALE 0.500	TITLE ACV-SM013	SIZE B	DRAWING NUMBER 89-460-003	REV D
DWN MAP 2012-09-12	APVD PROD ENGRG DPD 2012-09-18		CUSTOMER COPY	
X NO	APVD ENGRG PWB 2012-09-12			