

SINGLE MODULATING VALVE

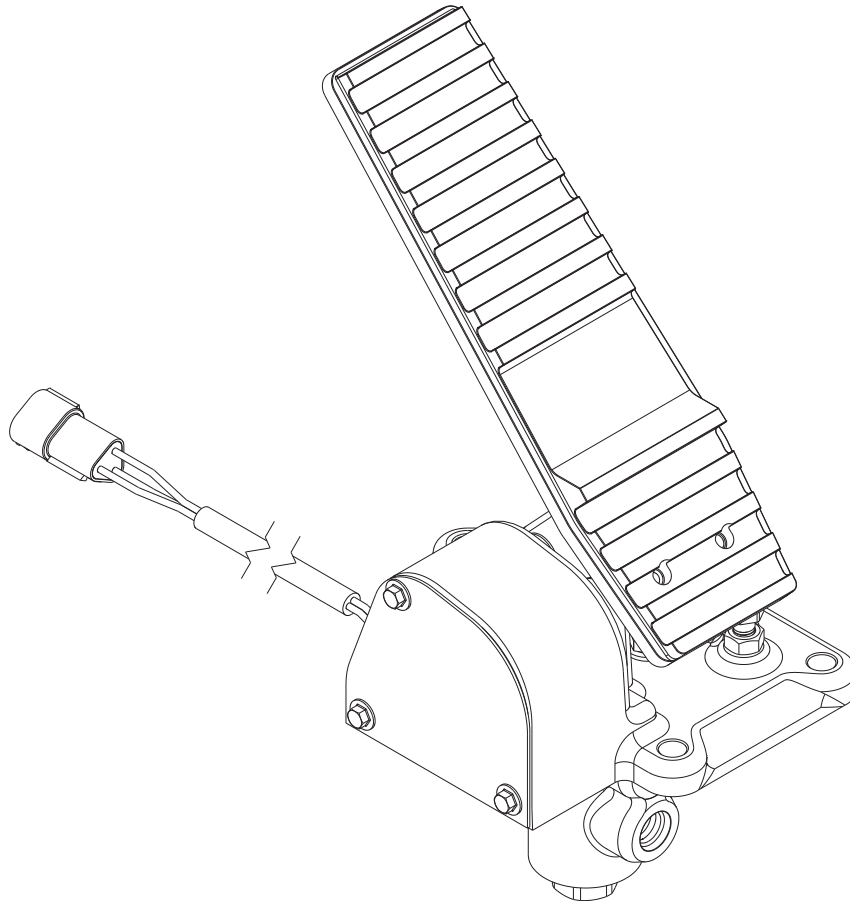


Service Instructions

TABLE 1 (Specifications)

Complete Unit Model Number	Valve Assembly Number	Repair Kit Number	Brake Pressure Setting	
			bar	(PSI)
06-466-531	20-200-144	06-400-487	140.0 ± 5.2	(2030 ± 75)

NOTE: If your product number is not listed, contact ZF Off-Highway Solutions Minnesota Inc. for information.



This publication is not subject to any update service. Information contained in this publication was in effect at the time the publication was approved for printing and is subject to change without notice or liability. ZF Off-Highway Solutions Minnesota Inc. reserves the right to revise the information presented or to discontinue the production of parts described at any time.



Model Number: 06-466-531

DISASSEMBLY

(Refer to Figures 1 and 2)

NOTE

Housing (6) and spool (5) are manufactured as a matched set. This set, housing and spool, must not be intermixed with other parts.

1. Remove boot (14) from piston (13) and housing (6).
2. Remove piston (13), springs (10, 11, & 12), shim(s) (9), and retainer assembly (8) from housing (6). **NOTE: Be aware of the number of shim(s) being removed from housing.**
3. Carefully remove cup (7) from housing (6) bore. **NOTE: Be careful not to scratch or mar housing bore.**
4. Remove plug (1), retainer (3), and spring (4) from housing (6). Remove o-ring (2) from plug (1).
5. Carefully remove spool (5) from plug (1) side of housing (6). **NOTE: Be careful not to damage spool or housing bore.**

ASSEMBLY

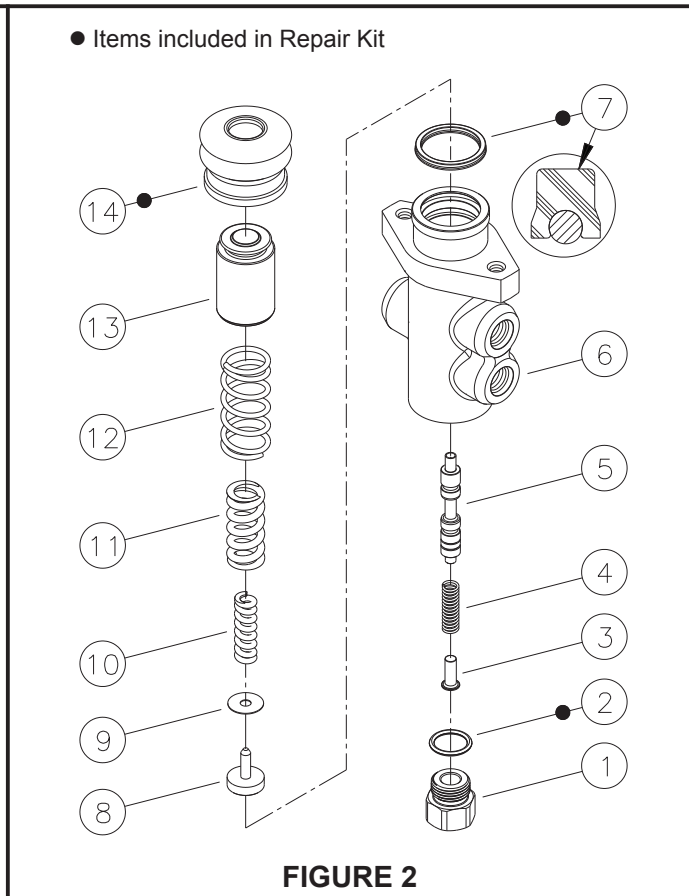
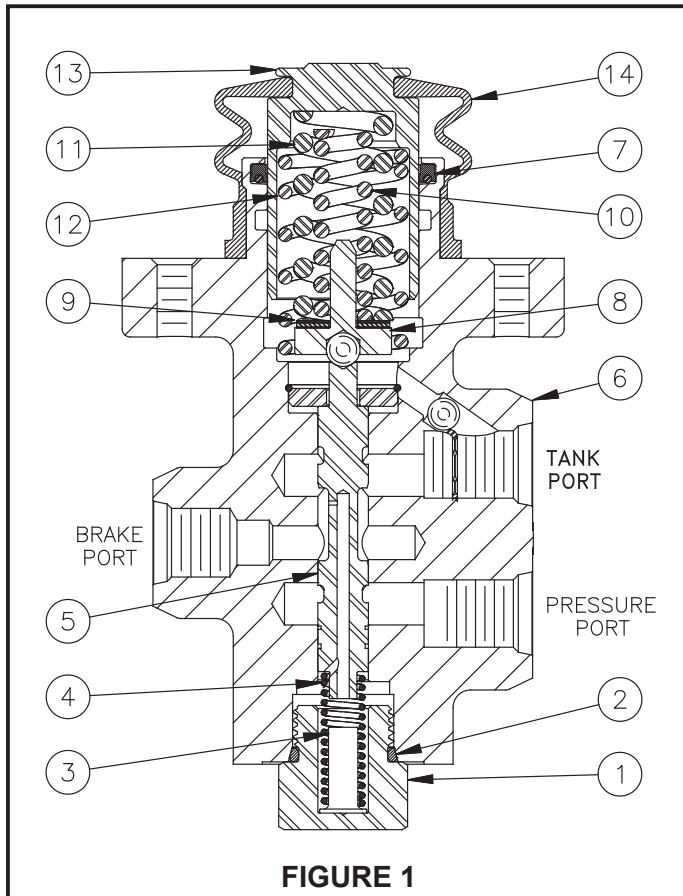
(Refer to Figures 1 and 2)

LUBRICATE ALL RUBBER COMPONENTS FROM REPAIR KIT WITH CLEAN TYPE FLUID USED IN THE SYSTEM.

1. Clean all parts thoroughly before assembling.
2. Lubricate spool (5) with clean system fluid and carefully slide into plug (1) side of housing (6) bore. Note direction of spool (5). **NOTE: Spool must slide freely into housing bore. If either part is damaged, a new valve assembly may be required.**
3. Install new o-ring (2) on plug (1).
4. Install retainer (3) and spring (4) into plug (1). Install plug (1) in housing (6) and torque plug (1) 47.5-54.2 N·m (35-40 lb-ft).
5. Carefully install new cup (7) into housing (6) bore. Note direction of cup (7). **NOTE: Be careful not to scratch or mar housing bore.**
6. Install springs (10, 11, & 12), shim(s) (9) and retainer assembly (8) in piston (13). Be sure to install the same number of shim(s) as were removed.
7. Carefully install piston (13) assembly into housing (6) bore.
8. Install new boot (14) on housing (6) and piston (13).

NOTE

After service, the valve must develop the pressure indicated in the specifications, TABLE 1 on page 1. Shim(s) (9) are used to obtain the correct pressure setting. Contact MICO if brake pressure setting is not able to be obtained.



⚠ WARNING

Installation and test note: Piston (13) in Figures 1 and 2 must be retained mechanically. This will prevent it from blowing out at high velocity if an incorrect connection occurs from power source to tank port. **Be sure the tank port is connected to tank.** Failure to do this could result in serious injury or death.