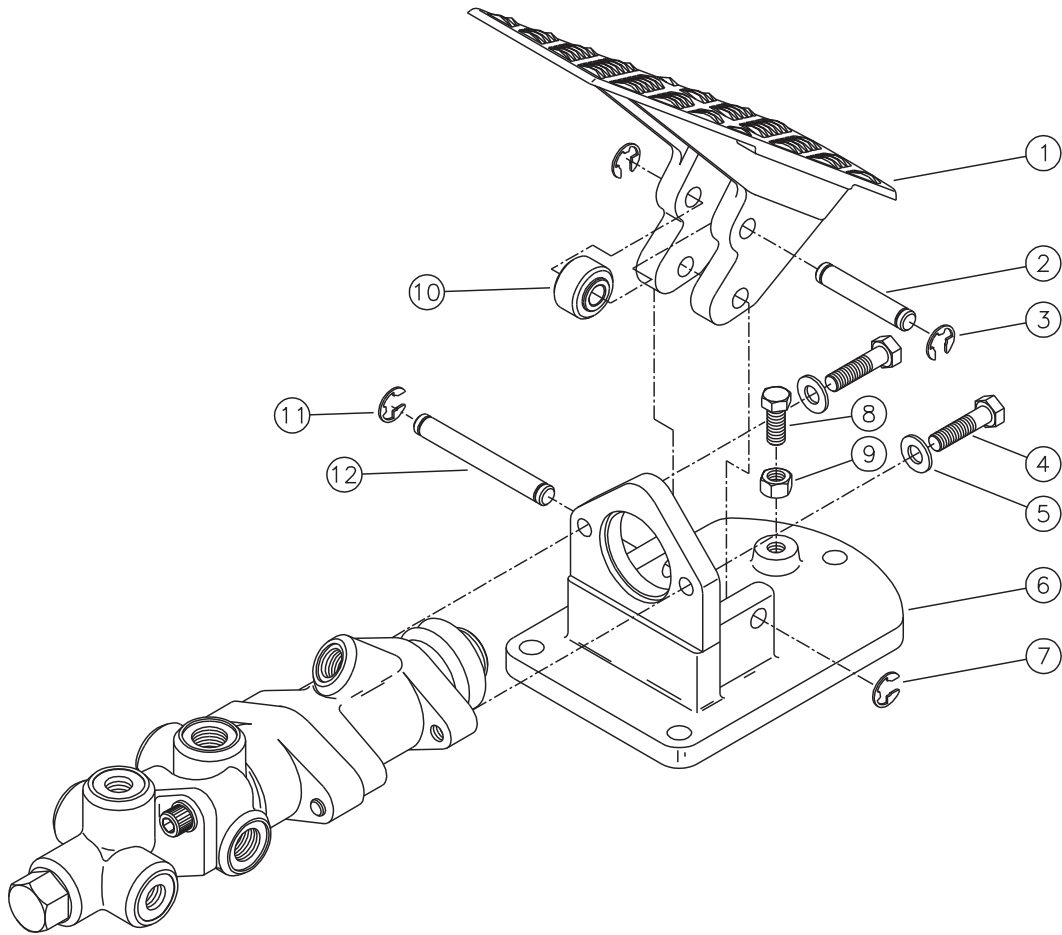


# PRESSURE MODULATING VALVE (Pedal Actuated)



## Service Instructions



### PEDAL DISASSEMBLY

1. Separate pedal (1) from pedal base (6) by removing one e-ring (11) from pin (12) and sliding pin from the base.
2. Inspect pin (2) and cam (10) to make sure cam is in good working order and moving freely.
3. It is unnecessary to remove pin (2), cam (10), cap screw (8) or nut (9) unless damaged.
4. Separate valve assembly from base (6) by removing cap screws (4) and washers (5).

#### NOTE

If cap screw (8) or nut (9) are loosened or removed, they must be reset properly. With all parts assembled, adjust screw (8) to allow the valve spool to fully release. After adjustment is made tighten nut (9).

### PEDAL ASSEMBLY

#### NOTE

Before assembling pin (12) lubricate with a good quality polymer base moly.

1. Attach valve assembly to base (6) using cap screws (4) and washers (5). Torque cap screws 24.4-29.8 N·m (18-22 lb·ft).
2. Align pedal (1) between ears of base (6) and insert pin (12). Install e-ring (11).

This publication is not subject to any update service. Information contained in this publication was in effect at the time the publication was approved for printing and is subject to change without notice or liability. ZF Off-Highway Solutions Minnesota Inc. reserves the right to revise the information presented or to discontinue the production of parts described at any time.



**ZF Off-Highway Solutions Minnesota Inc.**

1911 Lee Boulevard / North Mankato, MN U.S.A. 56003

**Tel:** +1 507 625 6426 **Fax:** +1 507 625 3212