

RELAY VALVE



Service Instructions

NOTE

The components shown in Figure 1 may appear slightly different than what is found in your relay valve.

DISASSEMBLY

(Refer to Figure 1)

1. Separate base (16) from housing (11) by removing cap screws (17).
2. Carefully remove sleeve (15), spool (13), and ball (12). Separate spool (13) from sleeve (15). **NOTE: Be careful not to scratch or mar spool (13) or sleeve (15) bore.**
3. Remove o-rings (14) from sleeve (15).
4. Loosen nut (1) and remove end plug (4) from housing (11). Remove spring (5), nut (1), washer (2), and o-ring (3) from end plug (4).
5. Using a wooden dowel, remove spacer (10), sleeve (7), and spool (9) assembly from housing (11) bore. **NOTE: Be careful not to scratch or mar sleeve (7) or housing (11) bore.**

CAUTION

Spool (9) and sleeve (7) are manufactured as a matched set. Do not intermix these parts.

6. Separate spacer (10) and spool (9) from sleeve (7). **NOTE: Excessive wear on either spool (9) or sleeve (7) may require replacement.**
7. Remove o-rings (6 & 8) from sleeve (7).
8. Remove bleeder screw (19). Remove o-ring (18) from bleeder screw (19). **NOTE: Not all models use bleeder screw (19) or o-ring (18).**

ASSEMBLY

(Refer to Figure 1)

LUBRICATE ALL RUBBER COMPONENTS FROM REPAIR KIT WITH CLEAN TYPE FLUID USED IN THE SYSTEM.

1. Clean all parts thoroughly before assembling. Lubricate spools (9 & 13) with clean type fluid used in the system.
2. Install new o-rings (6) on large diameter end of sleeve (7) and new o-ring (8) on smaller diameter end of sleeve (7).
3. Carefully insert spool (9) into sleeve (7). Note direction of spool.
4. Insert spacer (10) into housing (11) bore through end plug (4) end of housing. Note direction of spacer.
5. Carefully insert sleeve (7) and spool (9) assembly into housing (11) bore using a wooden dowel. Note direction of assembly.
6. Install spring (5) into housing (11) bore.

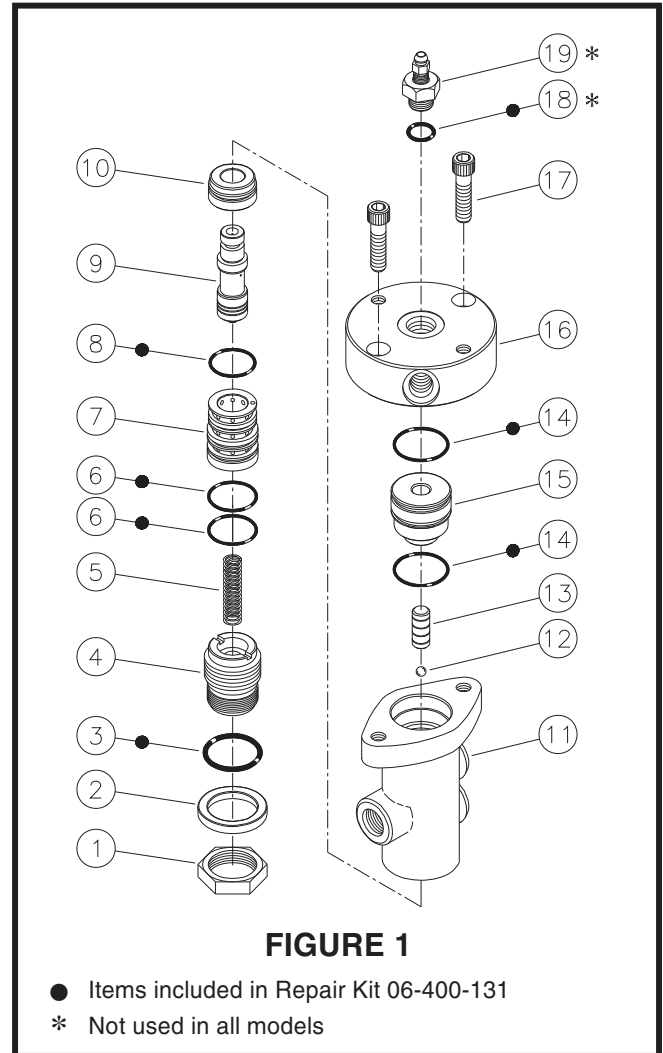


FIGURE 1

● Items included in Repair Kit 06-400-131

* Not used in all models

7. Install end plug (4) and torque 10.9-20.3 N·m (96-180 lb-in) to seat sleeve. Then loosen end plug (4) 1/4 turn and torque 1.1-6.0 N·m (10-60 lb-in).
8. Install new o-ring (3), washer (2) and nut (1). Hold end plug (4) with a wrench and torque nut 67.8-81.4 N·m (50-60 lb-ft).
9. Install new o-rings (14) on sleeve (15). Carefully insert spool (13) into sleeve (15).
10. Install ball (12) on the top of spool (9) already in housing. Install sleeve (15) assembly in housing (11) bore.
11. Carefully install base (16) over sleeve (15) while aligning cap screws (17) with holes in housing (11). Torque cap screws 29.8-33.9 N·m (22-25 lb-ft).
12. Install new o-ring (18) on bleeder screw (19). Install bleeder screw (19) in base (16) and torque 39.3-43.4 N·m (29-32 lb-ft). **NOTE: Not all models use bleeder screw (19) or o-ring (18).**

This publication is not subject to any update service. Information contained in this publication was in effect at the time the publication was approved for printing and is subject to change without notice or liability. ZF Off-Highway Solutions Minnesota Inc. reserves the right to revise the information presented or to discontinue the production of parts described at any time.

