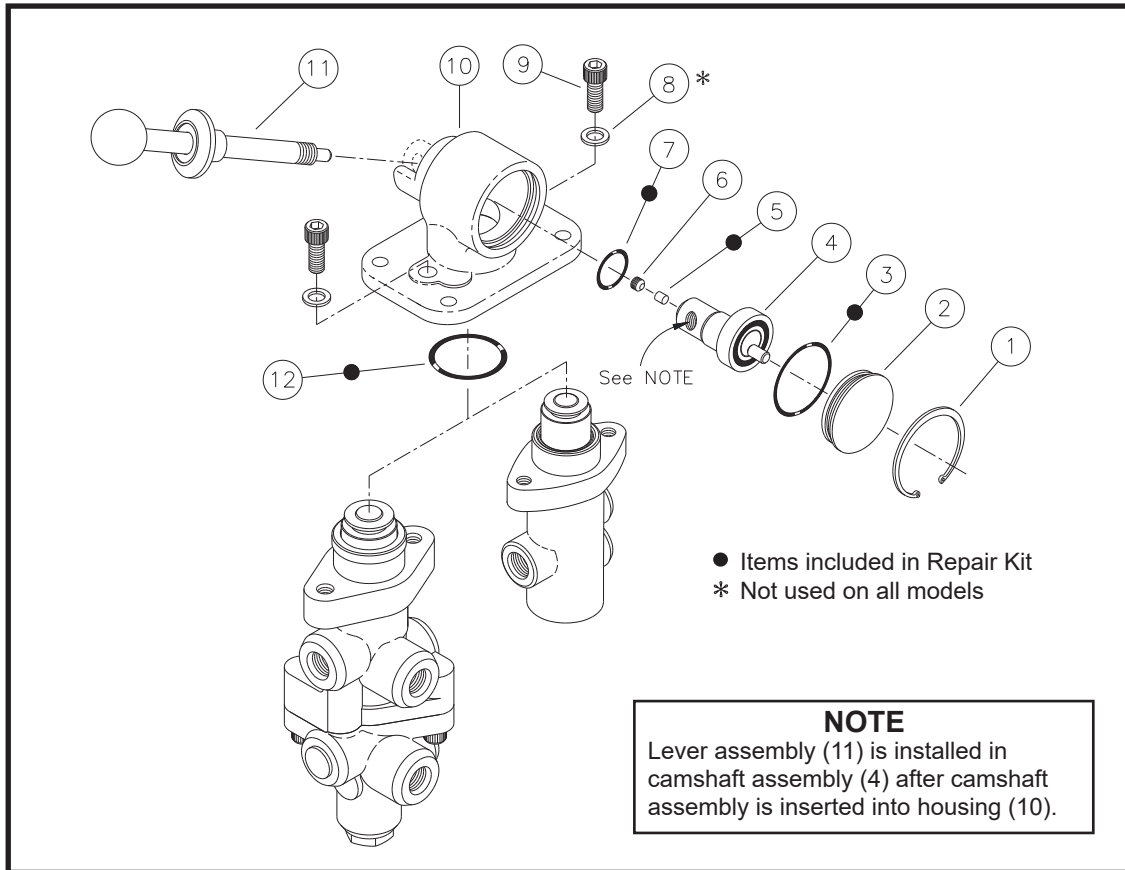


LEVER ACTUATED Modulating Valves



Service Instructions



LEVER DISASSEMBLY

1. Separate lever assembly from valve by removing two cap screws (9) and washers (8). Remove o-ring (12) from valve body. **NOTE: Not all models use washer (8).**
2. Remove set screw (6) and plug (5) from end of camshaft assembly (4). Remove lever assembly (11) from camshaft assembly by turning assembly counter clockwise. **NOTE: Not all models use bushings (9 & 10).**
3. Remove retaining ring (1). Remove end plug assembly (2) and camshaft assembly (4) from housing (10).
4. Thoroughly inspect end plug assembly (2), housing (10), and camshaft assembly (4) for worn or damaged parts. Closely check bearing, cam, and bushings. **NOTE: There are two bushings. One is part of the end plug assembly and the other is inside the housing.**
5. Carefully remove o-ring (7) from housing (10).
6. Remove o-ring (3) from end plug assembly (2).

LEVER ASSEMBLY

LUBRICATE O-RINGS FROM REPAIR KIT WITH GREASE BEFORE ASSEMBLING.

1. Insert new o-ring (7) into housing (10).
2. Thoroughly lubricate camshaft assembly (4) with a good quality polymer base moly grease before assembly.
3. Carefully insert camshaft assembly (4) into housing (10). Be sure camshaft assembly bottoms out on the bushing in housing.
4. Install new o-ring (3) on end plug assembly (2). Carefully insert assembly into housing (10) and install retaining ring (1).
5. Thread lever assembly (11) into end of camshaft assembly.
6. Install new plug (5) and set screw (6) into end of camshaft assembly (4). Tighten screw (6).
7. Be sure lever assembly is in good working order and moving freely.
8. Install new o-ring (12) on valve housing.
9. Carefully align and assemble lever assembly and valve using two cap screws (9) and washers (8). Torque cap screws 27.1-33.9 N·m (20-25 lb·ft). **NOTE: Not all models use washers (8).**

This publication is not subject to any update service. Information contained in this publication was in effect at the time the publication was approved for printing and is subject to change without notice or liability. ZF Off-Highway Solutions Minnesota Inc. reserves the right to revise the information presented or to discontinue the production of parts described at any time.

