

Dual Load Sensing ACCUMULATOR CHARGING VALVE

Conversion Instructions

MICO®

These conversion instructions will change 06-463-156 accumulator to have charge limits of 06-463-162
Accumulator High Limit 158.6 ± 3.5 bar (2300 ± 50 PSI) changes to 175.8 ± 3.5 bar (2550 ± 50 PSI)
Accumulator Low Limit 127.6 ± 3.5 bar (1850 ± 50 PSI) changes to 144.8 ± 3.5 bar (2100 ± 50 PSI)

NOTES

Before attempting the conversion make sure all stored energy has been relieved from the hydraulic pressure accumulators. See OEM Service Instructions.

It is not necessary to remove the valve from the machine for this conversion process as long as the valve is reassembled correctly. Proper reassembly can be confirmed by proper function. See valve adjustment below.

The entire conversion procedure must be done with contamination free methods. Clean the valve as necessary. Be careful to keep contamination and paint chips out of the charge valve.

CONVERSION INSTRUCTIONS

1. Remove plug (1) from housing.
2. Remove o-ring (2) from plug (1) and discard.
3. Remove screw (3) from housing.
4. Remove pin (4) from screw (3) using a drive punch.
Discard pin (4). **NOTE: Be careful not to damage threads of screw (3).**
5. Remove spring (5) from housing and discard.
6. Install new spring (5) from the conversion kit into the housing. Proper reassembly can be verified by lightly pushing on the end of spring (5). There should be a small amount of travel 0.38 mm (0.015 in) that rebounds when force is released from the end of spring (5).
NOTE: It may be necessary to apply a small amount of grease to the ball (7) and retainer (6) to hold parts together for proper reassembly.
7. Insert new pin (4) in screw (3). Be sure pin is aligned properly and is evenly driven into screw. Do not damage threads.
8. Thread screw (3) into housing to a depth of 12.7 mm (0.50 in) measured from the spot face at the end of the housing to the top of the screw.
9. Install new o-ring (2) on plug (1) and install plug in housing. Torque plug (1) 47.5-54.2 N·m (35-40 lb·ft).
10. Remove plug (8) from housing and discard. Install new plug (8) from conversion kit stamped with part number 06-463-162. Torque new plug (8) 67.8-81.4 N·m (50-60 lb·ft).

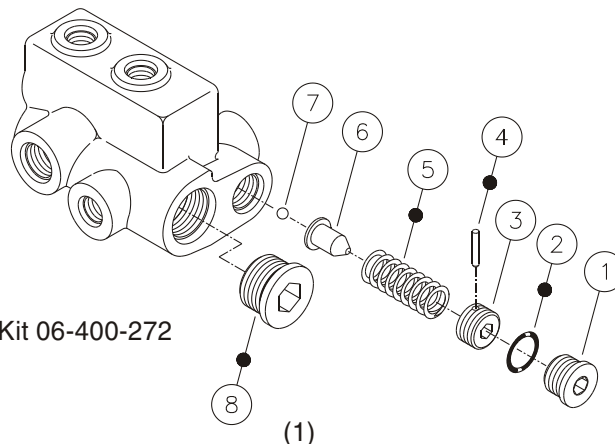
VALVE ADJUSTMENT

1. Tee an accurate pressure gauge in the switch port or one accurate gauge in each of the two accumulator lines.
2. Start pump and allow approximately one minute for charging to begin. Observe the accumulator high limit pressure at the end of the charge cycle. This pressure should be 175.8 ± 3.5 bar (2550 ± 50 PSI). If out of tolerance, the pressure can be adjusted by turning screw (3) clockwise to increase and counterclockwise to decrease at a rate of about 18.6 bar (125 PSI) per 1/4 turn of the screw. This pressure can be checked correctly only if after each adjustment of screw (3) the accumulator pressure is reduced to below the low limit setting and the system recharges the accumulator pressure back to its high limit.

⚠ CAUTION

Operation of the machine with plug (1) removed may result in oil exiting from the valve.

3. Once the accumulator high limit has been set, verify the accumulator low pressure limit is 144.8 ± 3.5 bar (2100 ± 50 PSI). It may be necessary to make an adjustment to the accumulator high limit to get the accumulator low limit within specified limits.
4. Torque plug (1) 47.5-54.2 N·m (35-40 lb·ft) at the completion of the conversion process.



- Items included in Conversion Kit 06-400-272

This document is intended to provide general information about MICO Products. MICO, Inc. has attempted to present accurate information about MICO Products in its catalogs, brochures, and other printed materials. MICO, Inc. is not responsible for errors, inaccuracies, or inconsistencies that may exist in any catalog brochure or other printed materials or any damages arising from or related to reliance on information in them. Materials and specifications for MICO Products set forth in catalogs, brochures, and other printed materials are subject to change without notice or obligation. Refer to www.mico.com for the most recent versions of our literature. If you have any questions concerning MICO Products, please contact MICO, Inc. All MICO Products and service are sold and provided subject to the MICO Warranty at www.mico.com in effect on the date of sale or supply.

MICO is a trademark and registered trademark of MICO, Inc. MICO is registered in the U.S. Patent and Trademark Office as well as in Australia, Canada, Indonesia, Japan, Peoples Republic of China, South Korea, and the European Community.



Innovative Braking and Controls Worldwide

MICO, Incorporated

1911 Lee Boulevard / North Mankato, MN U.S.A. 56003-2507

Tel: +1 507 625 6426 **Fax:** +1 507 625 3212

Form No. 81-463-044

2005-11-03

www.mico.com