



## Service Instructions

### Pedal and Base Assembly Replacement Instructions

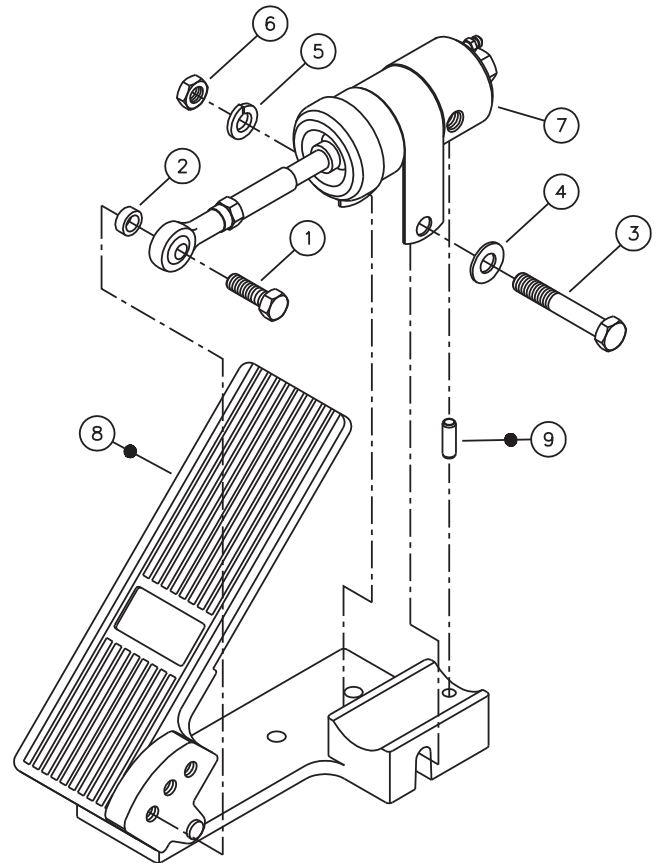
(Refer to Figure 1)

THOROUGHLY CLEAN PEDAL AND BASE ASSEMBLY AND SURROUNDING AREA OF ALL DIRT, GREASE, OIL, ETC. BEFORE SERVICING.

#### NOTE

It may not be necessary to disconnect fluid lines from actuator (7) to replace pedal and base assembly (8). However, if fluid lines are disconnected during servicing, cap lines or hoses to prevent entry of contaminants into hydraulic system.

1. Remove cap screw (1) and spacer (2). **NOTE: For reassembly purposes, note the position of cap screw (1) with regard to pedal angle.**
2. Remove hex nut (6), lock washer (5), cap screw (3), and washer (4).
3. Unbolt pedal and base assembly (8) from machine and remove pedal and base assembly (8).
4. Spring pin (9) may remain in actuator assembly (7) when pedal and base assembly (8) is removed. Inspect roll pin (9) and replace as necessary.
5. Install new pedal and base assembly (8) on machine.
6. Install new spring pin (9) if necessary. Position actuator assembly (7) on pedal and base assembly (8).
7. Install cap screw (3), washer (4), lock washer (5), and hex nut (6). Torque hex nut (6) 29.8-36.6 N·m (22-27 lb·ft).
8. Install cap screw (1) and spacer (2) in the same position as removed. Torque cap screw (1) 24.4-29.8 N·m (18-22 lb·ft).
9. Before using machine, be sure throttle control is operating properly.



● Items included in Pedal and Base Assembly Replacement Kit

**FIGURE 1**

This publication is not subject to any update service. Information contained in this publication was in effect at the time the publication was approved for printing and is subject to change without notice or liability. ZF Off-Highway Solutions Minnesota Inc. reserves the right to revise the information presented or to discontinue the production of parts described at any time.



**ZF Off-Highway Solutions Minnesota Inc.**

1911 Lee Boulevard / North Mankato, MN U.S.A. 56003

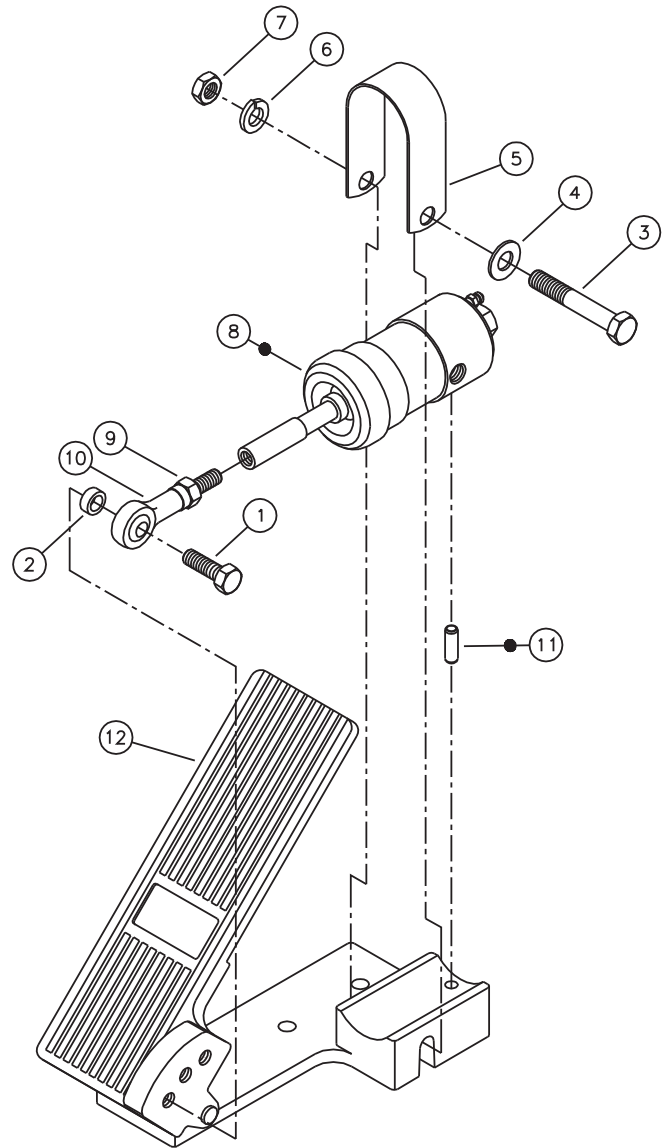
Tel: +1 507 625 6426 Fax: +1 507 625 3212

## Actuator Assembly Replacement Instructions

(Refer to Figure 2)

THOROUGHLY CLEAN PEDAL AND BASE ASSEMBLY AND SURROUNDING AREA OF ALL DIRT, GREASE, OIL, ETC. BEFORE SERVICING. CAP HOSE AND LINE ENDS TO PREVENT ENTRY OF CONTAMINANTS INTO HYDRAULIC SYSTEM.

1. Remove cap screw (1) and spacer (2). **NOTE: For reassembly purposes, note position of cap screw (1) with regard to pedal angle.**
2. Loosen jam nut (9) and remove clevis assembly (10) from actuator assembly (8).
3. Disconnect fluid lines from actuator assembly (8). **NOTE: Prevent entry of contaminants into the hydraulic system.**
4. Remove hex nut (7), lock washer (6), cap screw (3), and washer (4). Remove clamp (5) and actuator assembly (8) from pedal and base assembly (12).
5. Be sure new spring pin (11) is properly installed in new actuator assembly (8).
6. Position new actuator assembly (8) on pedal and base assembly (12). Install clamp (5) on new actuator assembly (8).
7. Install cap screw (3), washer (4), lock washer (6), and hex nut (7). Torque hex nut (7) 29.8-36.6 N·m (22-27 lb·ft).
8. Install clevis assembly (10) and jam nut (9) on new actuator assembly (8). Adjust clevis (10) to allow full piston retraction in actuator and to achieve desired pedal angle. Torque jam nut (9) 9.5-13.6 N·m (7-10 lb·ft) while holding clevis (10).
9. Install cap screw (1) and spacer (2) in the same position as removed. Torque cap screw (1) 24.4-29.8 N·m (18-22 lb·ft).
10. Properly reconnect fluid lines. Bleed system of air and check connections for leaks. Tighten fittings if leaks occur.
11. Before using machine, be sure throttle control is operating properly.



- Items included in Actuator Assembly Replacement Kit

**FIGURE 2**