

Modulating Brake Valves



Service Instructions

Models: 06-460-344

DISASSEMBLY

1. Remove ring (1) and boot (2) from housing (17).
2. Remove piston (3), shim or shims (4), spring (5) and spring (6) from housing bore. Note number of shims being removed from housing.
3. Remove o-ring (7) from housing bore. NOTE: Care must be taken so as not to scratch housing bore.
4. Remove retaining ring (8) from housing bore. NOTE: Care must be taken so as not to scratch housing bore.
5. Remove cupped washer (9) from housing bore.
6. Remove retaining ring (10) from housing bore.
7. Remove piston and sleeve assembly (11 & 15) from housing bore. Separate piston (15) from sleeve (11).
8. Remove o-ring (13) and back-up ring (12) from sleeve (11).
9. Remove spring (16) from piston (15).
10. Remove cup (14) from piston (15).

CAUTION: This model has a check ball located inside piston (15). Make sure ball is clean and moving freely.

11. Remove plug (27) from housing (17).
12. Remove o-ring (26), cup (24) and back-up ring (25) from plug (27).
13. Remove washer (23), spacer (22), spring (21) and guide (20) from housing bore.
14. Remove valve & ball assembly (19) from housing bore.
15. Remove o-ring (18) from valve & ball assembly (19).

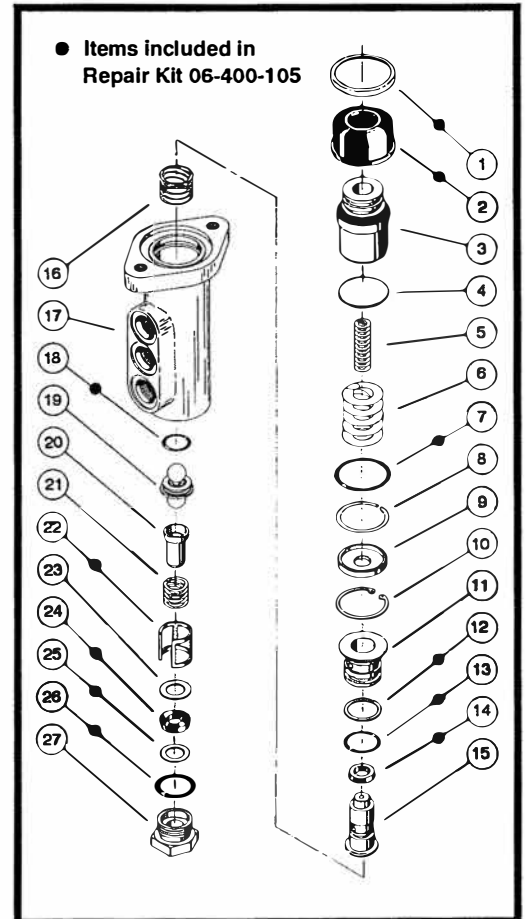
ASSEMBLY

1. Install new o-ring (18) on valve & ball assembly (19) and insert into housing bore. Note direction of valve & ball assembly.
2. Install new spacer (22) into housing bore.
3. Install new o-ring (26) on plug (27).
4. Insert new back-up ring (25) and new cup (24) inside end of plug (27). Note order of back-up ring and cup.
5. Install guide (20), spring (21) and washer (23) in plug (27). Now install plug in housing bore.

PARTS LIST

ITEM	DESCRIPTION
1	● RING
2	● BOOT
3	PISTON
4	SHIMS (as required)
5	SPRING
6	SPRING
7	● O-RING
8	RETAINING RING
9	CUPPED WASHER
10	RETAINING RING
11	SLEEVE
12	● BACK-UP RING
13	● O-RING
14	● CUP
15	PISTON
16	SPRING
17	HOUSING
18	● O-RING
19	VALVE & BALL ASSEMBLY
20	GUIDE
21	SPRING
22	● SPACER
23	WASHER
24	● CUP
25	● BACK-UP RING
26	● O-RING
27	PLUG

6. Install new cup (14) on piston (15) and insert into sleeve (11). Note direction of piston and sleeve.
7. Install new back-up ring (12) and new o-ring (13) on sleeve (11).
8. Install spring (16) on piston (15).
9. Install piston and sleeve assembly (11 & 15) in housing bore. Note direction of assembly.
10. Install retaining ring (10) in housing bore.
11. Install cupped washer (9) in housing bore.
12. Install retaining ring (8) in housing bore. NOTE: Care must be taken so



- as not to scratch housing bore.
13. Install new o-ring (7) in housing bore.
14. Install spring (5), spring (6), shim or shims (4) and piston (3) in housing bore.

CAUTION: For proper brake pressure setting, install the same number of shims that were removed during disassembly.

15. Install new boot (2) and new ring (1) in housing (17).

SPECIFICATIONS

Model Number	Brake System Pressure	Push Rod Force	Push Rod Stroke (Approx.)
06-460-344	0-2000 psi	800 lbs. @ 2000 psi	.326

NOTES:

Brake System Displacement controlling factors are accumulator capacity, pressure, and brake response time required.

Maximum input pressure rating is 3000 psi.

This publication is not subject to any update service. Information contained in this publication was in effect at the time the publication was approved for printing and is subject to change without notice or liability. ZF Off-Highway Solutions Minnesota Inc. reserves the right to revise the information presented or to discontinue the production of parts described at any time.

