

Single Pedal Actuated Modulating Power Brake Valve



Service Instructions

PEDAL DISASSEMBLY

(Refer to Figure 1)

1. Separate pedal (6) from base (10) by removing one e-ring (11) from pin (3) and sliding pin from base.
2. Inspect pin (7) and cam (2) to make sure cam is in good working order and moving freely.
3. It is unnecessary to remove pin (7), cam (2), set screw (1), cap screw (4), or nut (5) unless damaged.
4. Separate valve assembly from base (10) by removing cap screws (8) and washers (9).

PEDAL ASSEMBLY

(Refer to Figure 1)

NOTE

Before assembling pin (3) lubricate with a good quality polymer base moly grease.

1. Attach valve assembly to base (10) using cap screws (8) and washers (9). Torque cap screws (8) 47.5-54.2 N·m (35-40 lb·ft).
2. Align pedal (6) between ears of base (10) and insert pin (3). Install e-ring (11).

NOTE

If cap screw (4) or nut (5) are loosened or removed, they must be reset properly. With all parts assembled, adjust screw (8) to allow the valve piston to open to reservoir. After adjustment is made tighten nut (5).

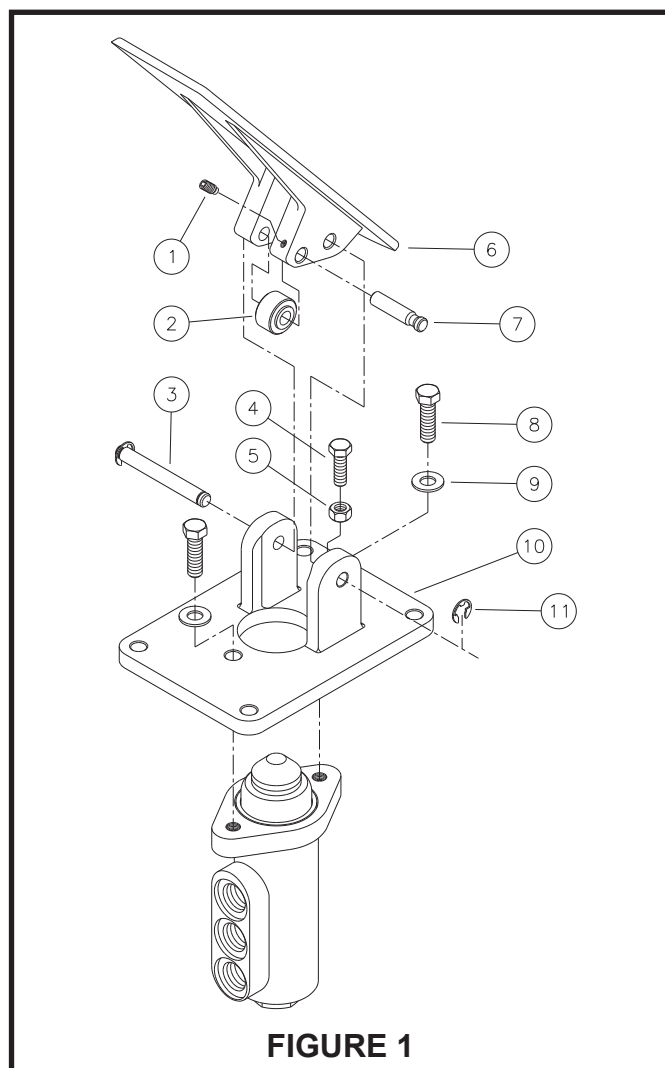


FIGURE 1

This publication is not subject to any update service. Information contained in this publication was in effect at the time the publication was approved for printing and is subject to change without notice or liability. ZF Off-Highway Solutions Minnesota Inc. reserves the right to revise the information presented or to discontinue the production of parts described at any time.

