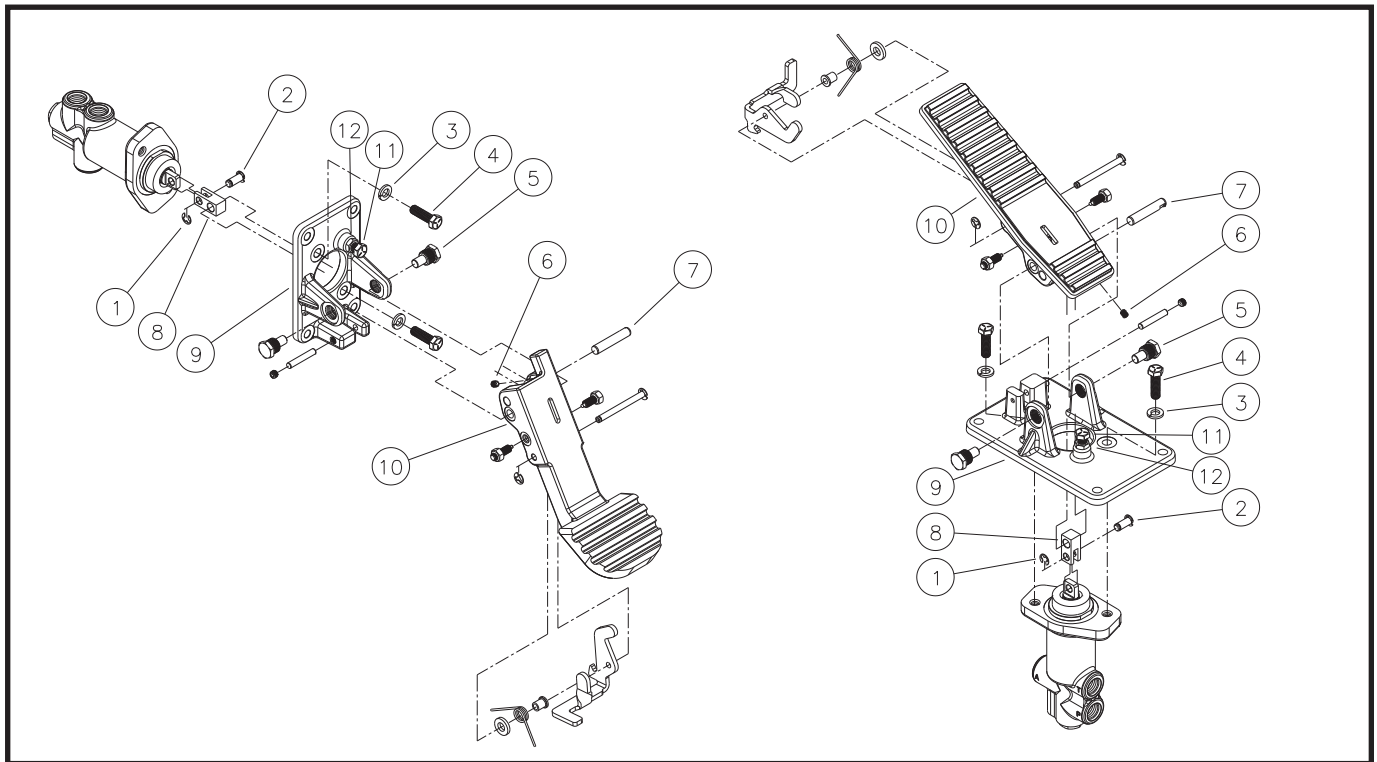


# PEDAL ACTUATED Reverse Modulating Brake Valve



## Service Instructions



### PEDAL DISASSEMBLY

1. Remove one e-ring (1) from pin (2) and remove pin (2).
2. Separate the valve assembly from base (9) by removing two cap screws (4) and lock washers (3).
3. Remove two studs (5) and separate pedal (10) from base (9).
4. Loosen set screw (6) and remove pin (7) from pedal (10) and clevis (8).
5. Any further disassembly is unnecessary unless there is damage.

### PEDAL ASSEMBLY

#### NOTE

Before assembly, clean and lubricate pins (2 & 7) and studs (5) with good quality polymer base moly grease.

1. Thoroughly clean pedal (10), base (9), and all other components and allow to dry before proceeding.
2. Install pin (7) in pedal (10) and clevis (8). Position pin (7) so flat on pin is aligned with set screw (6). Torque set screw (6) 8.5-9.6 N·m (75-85 lb·in).
3. Attach pedal (10) to base (9) using studs (5). Torque studs (5) 47.5-54.2 N·m (35-40 lb·ft).
4. Attach clevis (8) to valve push rod using pin (2). Install e-ring (1) on pin (2).
5. Install cap screws (4) and lock washers (3). Torque cap screws (4) 29.8-36.6 N·m (22-27 lb·ft).

#### NOTE

If cap screw (11) or nut (12) are loosened or removed, they must be reset properly. With all parts assembled, adjust screw (11) to allow the valve spool to fully release. After adjustment is made, torque nut (12) 27.1-33.9 N·m (20-25 lb·ft).

This publication is not subject to any update service. Information contained in this publication was in effect at the time the publication was approved for printing and is subject to change without notice or liability. ZF Off-Highway Solutions Minnesota Inc. reserves the right to revise the information presented or to discontinue the production of parts described at any time.

