

BOOSTED MASTER CYLINDER (Power Assist Section)



Service Instructions

DISASSEMBLY

(Refer to Figure 1)

1. Drain fluid from unit before disassembling.
2. Remove push rod (1) and boot (2) from end plug (4).
3. Remove retaining ring (3). **NOTE: Retaining ring is under tension of spring (16).**
4. Remove internal parts assembly (28) from housing (18).
5. Remove spring (16) and retainer (15) from internal parts assembly (28).
6. Remove end plug (4) from piston (8). Remove o-ring (5) from end plug.
7. Remove retaining ring (17) from piston (8).
8. Remove piston (14) from piston (8). Remove spring (13) from piston (8).
9. Remove cups (7 & 9) and back-up rings (6 & 10) from piston (8).
10. Remove piston (12) from piston (8), then remove o-ring (11) from piston (12).
11. Remove retaining ring (23) from housing. Remove washer (22), back-up ring (21), cup (20), and washer (19).
12. Remove plug (27) from housing. **NOTE: Plug is under tension of spring (25).**
13. Remove o-ring or copper ring (26) from plug (27). **NOTE: If an o-ring is found on plug, replace with an o-ring, if a copper ring is found on plug, replace with a copper ring.**
14. Remove spring (25) and valve stem (24) from housing.

ASSEMBLY

(Refer to Figure 1)

LUBRICATE ALL RUBBER COMPONENTS FROM REPAIR KIT WITH CLEAN TYPE FLUID USED IN THE SYSTEM.

1. Clean all parts thoroughly before assembling.
2. Install valve stem (24) and spring (25) in housing (18).
3. Install new o-ring or copper ring (26) on plug (27). **NOTE: If an o-ring is found on plug, replace with an o-ring, if a copper ring is found on plug, replace with a copper ring.** Install plug (27) in housing.
4. Install new steel washer (19) into housing. Steel washer (19) is thinner than brass washer (22).
5. Install new cup (20), new back-up ring (21), new brass washer (22), and new retaining ring (23) into housing. Note direction and order of parts. **NOTE: Be careful not to scratch or mar retaining ring groove or housing bore.**
6. Install new o-ring (11) on piston (12).
7. Install new cup (7) on piston (8). Note direction of cup (7). Install piston (8) into piston (12). Install new cup (9) on piston (8). Note direction of cup (9). **NOTE: Back-up rings are no longer used.**
8. Install spring (13) on piston (8).
9. Install piston (14) over spring (13) and piston (8).
10. Install new retaining ring (17) on piston (8). **NOTE: Pistons (12 & 14) will have to be compressed to install retaining ring on piston (8).**
11. Install new o-ring (5) on end plug (4).
12. Install end plug (4) on piston (8).
13. Install retainer (15) over piston (14) and install spring (16) over retainer (15).
14. Install entire internal parts assembly (28) into housing. Use a twisting motion when inserting end of piston (8) through cup (20).
15. Install retaining ring (3) into housing.
16. Install new boot (2) on end plug (4) and push rod (1) into boot. **NOTE: Apply a small amount of good quality grease to tip of push rod.**

● Items included in Repair Kit

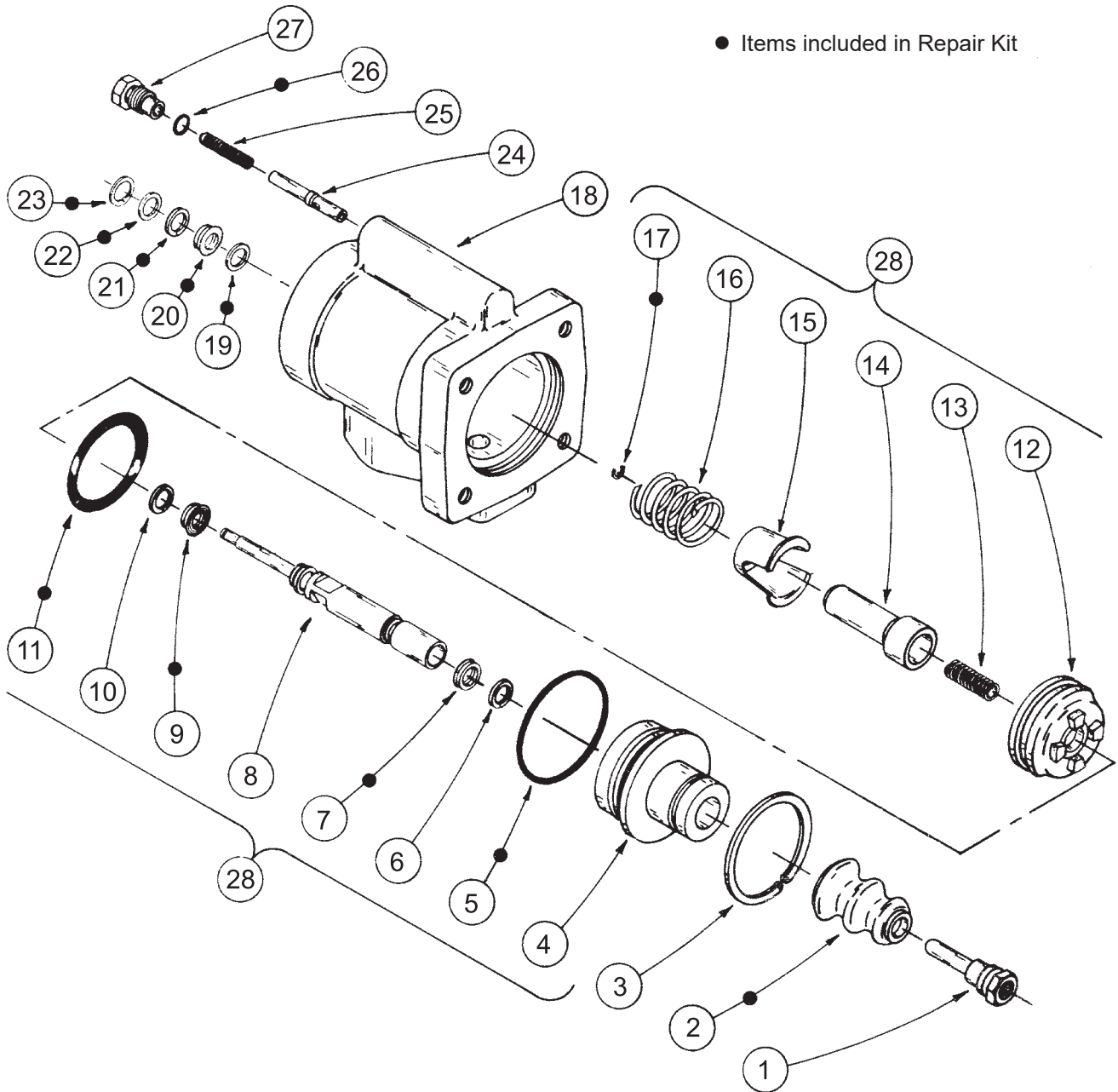


FIGURE 1

This publication is not subject to any update service. Information contained in this publication was in effect at the time the publication was approved for printing and is subject to change without notice or liability. ZF Off-Highway Solutions Minnesota Inc. reserves the right to revise the information presented or to discontinue the production of parts described at any time.



ZF Off-Highway Solutions Minnesota Inc.
1911 Lee Boulevard / North Mankato, MN U.S.A. 56003
Tel: +1 507 625 6426 Fax: +1 507 625 3212