

Remote Actuator



Service Instructions

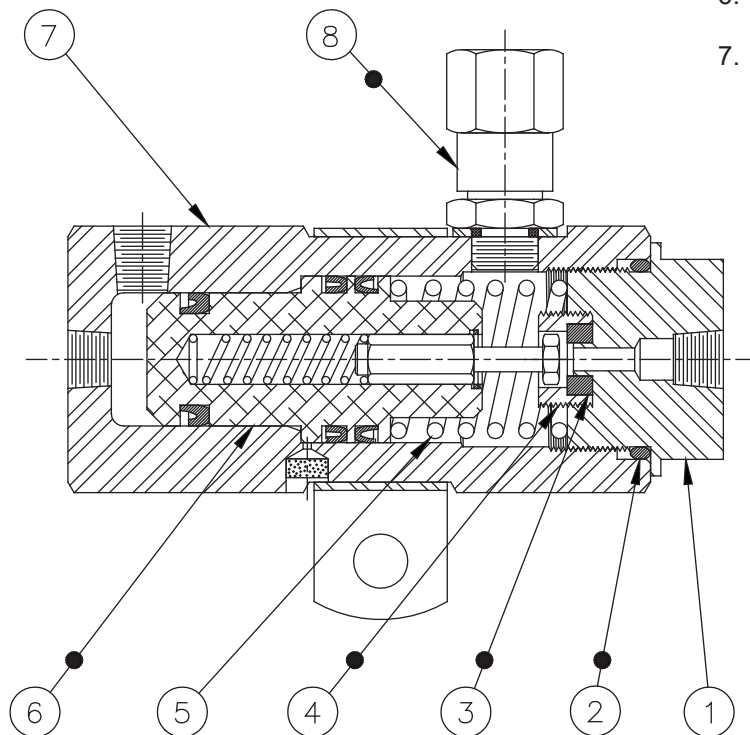
DISASSEMBLY

1. Disconnect necessary fluid lines and remove actuator from vehicle.
2. Remove end plug (1) from housing (7). **NOTE: End plug is under tension of spring (5).**
3. Remove o-ring (2), retainer (4) and seal (3) from end plug (1).
4. Remove spring (5) and piston assembly (6) from housing (7).
5. Remove residual valve assembly (8) from housing (7).

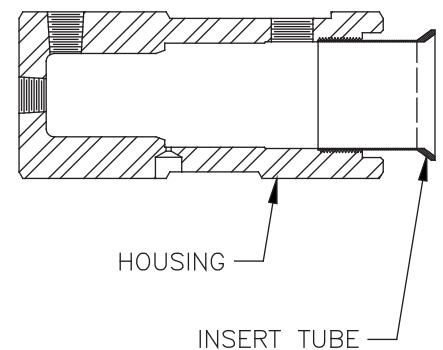
ASSEMBLY

LUBRICATE ALL RUBBER COMPONENTS FROM REPAIR KIT WITH CLEAN TYPE FLUID USED IN THE SYSTEM.

1. Clean all parts thoroughly before assembling.
2. Using insert tube from repair kit, carefully install new piston assembly (6) into housing (7). Note direction of piston assembly.
3. Place spring (5) in housing (7) over piston assembly (6).
4. Install new seal (3) and new retainer (4) into end plug (1). Tighten securely.
5. Install new o-ring (2) on end plug (1) and install end plug in housing (7). Torque 101.7-115.3 N·m (75-85 lb·ft).
6. Install new residual valve assembly (8) into housing (7). Torque 36.6-44.8 N·m (27-33 lb·ft).
7. Install actuator on vehicle. Connect necessary fluid lines. Bleed system of air. Tighten fittings if leaks occur. Make several applications to be sure actuator is working properly. **NOTE: All fittings must be inspected for leaks and tightened if leaks occur.**



● Items included in Repair Kit



This publication is not subject to any update service. Information contained in this publication was in effect at the time the publication was approved for printing and is subject to change without notice or liability. ZF Off-Highway Solutions Minnesota Inc. reserves the right to revise the information presented or to discontinue the production of parts described at any time.

