

MASTER CYLINDER



Service Instructions

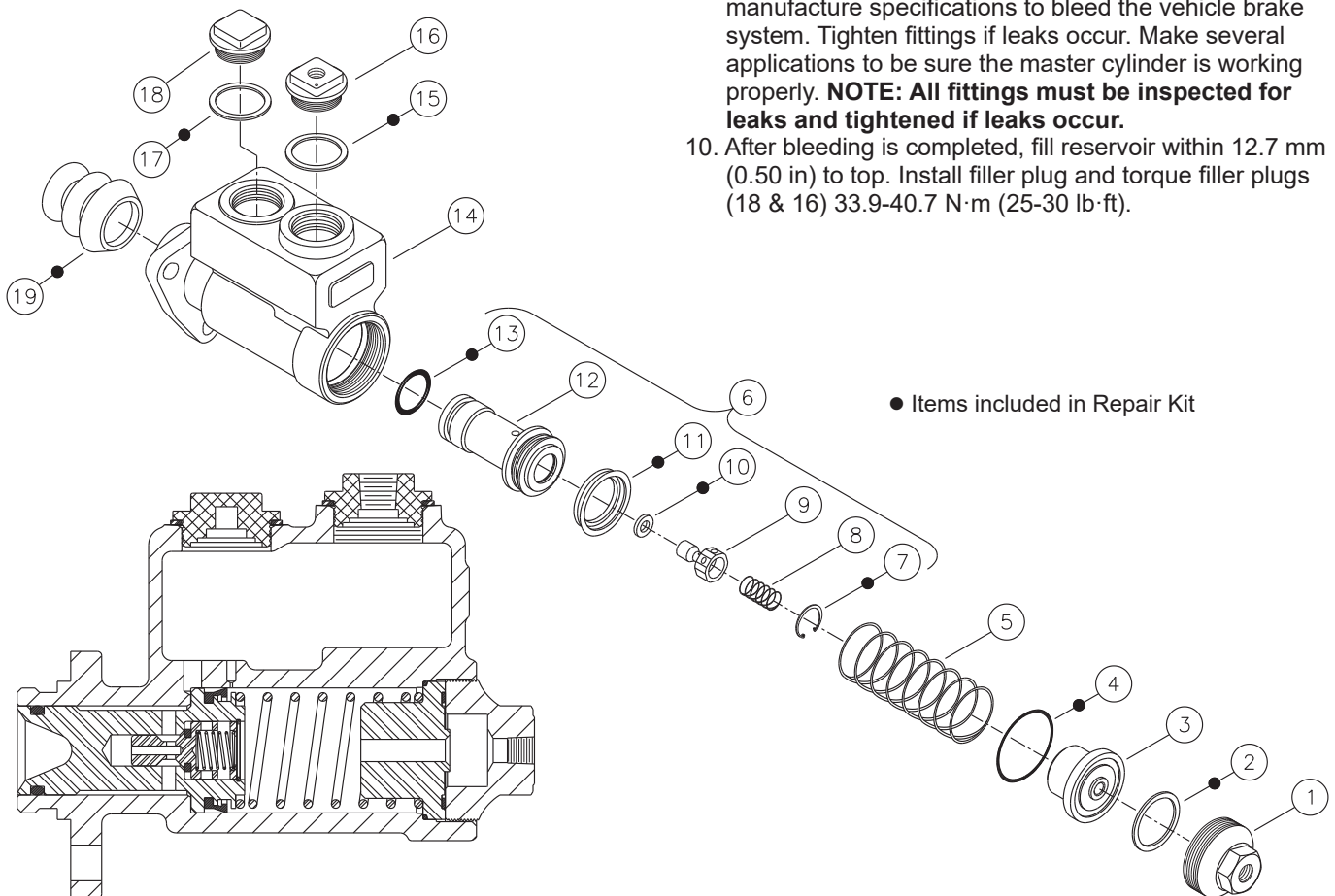
DISASSEMBLY

1. Remove the master cylinder from the vehicle by disconnecting the necessary fluid lines. Disconnect push the rod and remove the mounting bolts. Drain fluid from the master cylinder.
2. Remove boot (19) from housing (14).
3. Remove end plug (1), piston (3) and spring (5), from housing (14). Remove seal (2) and o-ring (4) from piston (3).
4. Remove piston assembly (6) from housing (14).
5. Remove retaining ring (7), spring (8), and valve (9) from piston (12). Remove seat (10) from valve (9).
6. Remove cup (11) and o-ring (13) from piston (12). Note direction of cup (11).
7. Remove filler caps (16 & 18) and gaskets (15 & 17) from housing (14).

ASSEMBLY

LUBRICATE ALL RUBBER COMPONENTS FROM REPAIR KIT WITH CLEAN TYPE FLUID USED IN THE SYSTEM.

1. Clean all parts thoroughly before assembling.
2. Install new seat (10) on valve (9). Install valve (9), spring (8), and new retaining ring (7) in piston (12).
3. Install new o-ring (13) and new cup (11) on piston (12). Note direction of cup (11).
4. Install piston assembly (6) in housing (14).
5. Install new o-ring (4) and new seal (2) on piston (3).
6. Lubricate the threads on end plug (1). Install spring (5), piston (3), and end plug (1) in housing (14). Torque end plug (1) 67.8-108.5 N·m (50-80 lb·ft).
7. Install new boot (19) on housing (14).
8. Install new gaskets (15 & 17) and filler plugs (16 & 18) on housing (14). Finger tighten filler plugs.
9. Install the master cylinder on the vehicle and connect the fluid lines. Connect the push rod. Fill reservoir and bleed the system of air. See form 81-001-002 instructions to bleed the master cylinder. Refer to the manufacture specifications to bleed the vehicle brake system. Tighten fittings if leaks occur. Make several applications to be sure the master cylinder is working properly. **NOTE: All fittings must be inspected for leaks and tightened if leaks occur.**
10. After bleeding is completed, fill reservoir within 12.7 mm (0.5 in) to top. Install filler plug and torque filler plugs (18 & 16) 33.9-40.7 N·m (25-30 lb·ft).



This publication is not subject to any update service. Information contained in this publication was in effect at the time the publication was approved for printing and is subject to change without notice or liability. ZF Off-Highway Solutions Minnesota Inc. reserves the right to revise the information presented or to discontinue the production of parts described at any time.

