

# MASTER CYLINDER



## Service Instructions

### DISASSEMBLY

1. Remove filler plugs (8 & 9) and gaskets (7 & 10) from housing (11).
2. Drain fluid from unit before disassembling.
3. Remove push rod (1) and boot (2) from housing (11).
4. Depress piston (5) and remove retaining ring (3) from housing (11).
5. Remove piston (5) from housing (11). **NOTE: Be careful not to scratch or mar housing bore when removing piston (5).**
6. Remove cup (4) and spring (6) from piston (5).
7. Place the master cylinder in a soft jawed vise in a vertical position with end plug (15) facing up.
8. Remove line bolt (19), fitting block (17) and gaskets (16 & 18) from end plug (15).
9. Remove end plug (15) from housing (11).

### ⚠ CAUTION

End plug (15) is under tension of spring (13).

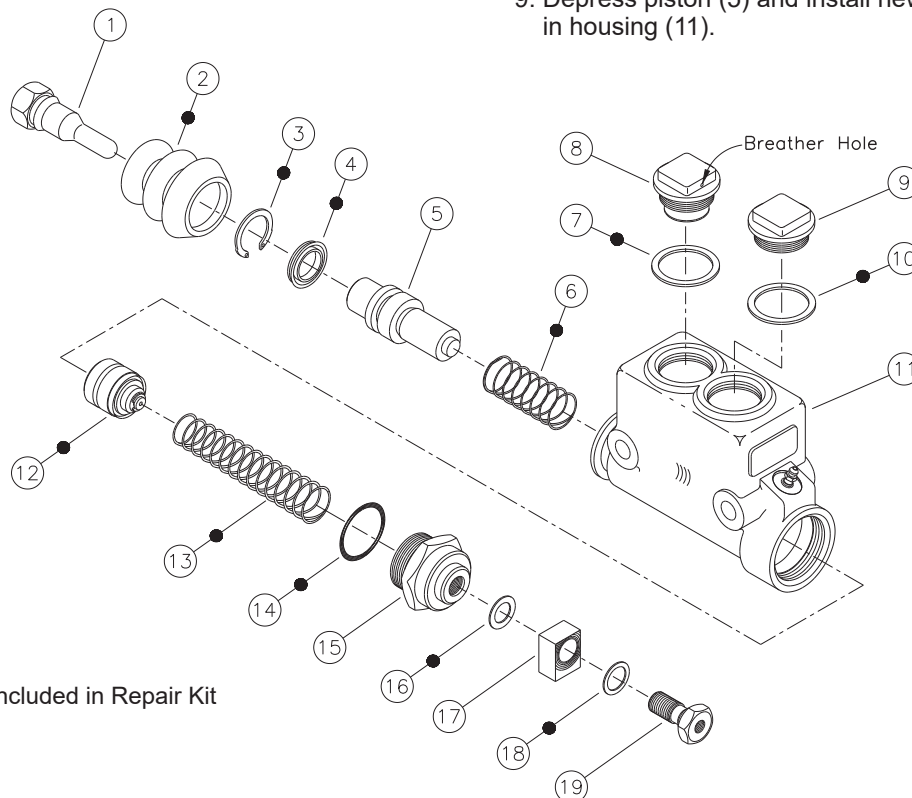
10. Remove o-ring (14) from end plug (15).
11. Remove spring (13) from housing.
12. Use a wooden dowel to push piston assembly (12) out end plug (15) side of master cylinder.

### ASSEMBLY

LUBRICATE ALL RUBBER COMPONENTS FROM REPAIR KIT WITH CLEAN TYPE FLUID USED IN THE SYSTEM.

1. Clean all parts thoroughly before assembling.
2. **NOTE: Before installing filler plug (8) be sure the filler plug breather hole is free of all contaminants. Use air pressure to clean and dry this hole.** Install new gaskets (7 & 10) on filler plugs (8 & 9) and install on housing (11).
3. Carefully install new piston assembly (12) in housing (11). Note direction of piston assembly (12). **NOTE: Be careful not to scratch or mar piston assembly or housing bore.**
4. Install new spring (13) in housing (11) with the small diameter end of spring on piston assembly (12).
5. Install new o-ring (14) on end plug (15). Lubricate the threads of end plug (15) and install in housing (11). Torque end plug (15) 67.8-108.5 N·m (50-80 lb-ft).
6. Install new gaskets (16 & 18) and fitting block (17) on line bolt (19) and finger tighten assembly in housing (11).
7. Remove the master cylinder from soft jawed vise.
8. Install new spring (6) and new cup (4) on piston (5) and install in housing (11). Note direction of piston (5).
9. Depress piston (5) and install new retaining ring (3) in housing (11).

continued on back . . .



● Items included in Repair Kit

10. Install new boot (2) and push rod (1) on housing (11).
11. Install the master cylinder on the vehicle and connect the fluid lines. Hold fitting block (17) in a fixed position and torque line bolt (19) 47.5-61.0 N·m (35-45 lb·ft). Connect push rod. Fill reservoir and bleed system of air. Tighten fittings if leaks occur. Make several applications to be sure the master cylinder is working properly. **NOTE: See form no. 81-600-001 instructions to bleed the master cylinder. Refer to vehicle manufacture specifications to bleed the vehicle brake system. All fittings must be inspected for leaks and tightened if leaks occur.**
12. After bleeding is completed, fill reservoir within 12.7 mm (0.50 in) of top. Install and torque filler plugs (8 & 9) 33.9-47.5 N·m (25-35 lb·ft).

This publication is not subject to any update service. Information contained in this publication was in effect at the time the publication was approved for printing and is subject to change without notice or liability. ZF Off-Highway Solutions Minnesota Inc. reserves the right to revise the information presented or to discontinue the production of parts described at any time.

