



INSTALLATION GUIDE

FIRST STEPS:

Installing the CAN bus Adapter and Interface Drivers

Before you can use a MICO Diagnostic Interface with your application, you must first install and configure the CAN bus adapter and interface drivers.

Introduction

The PEAK PCAN-USB Adapter allows a computer to communicate through a CAN bus, making it possible to perform diagnostic and programming operations on microcontrollers such as those used in brake systems.

MICO provides Diagnostic Interface software for its brake controllers. Before you can take full advantage of that software, you must first install and configure the drivers for the PEAK PCAN-USB Adapter.

This guide will take you through the installation and configuration of the PEAK OEM Drivers for the USB Adapter and the PEAK/STW CAN Interface Drivers which support the STW controllers that MICO offers.

Table of Contents

PEAK OEM Drivers for USB Adapter
Page 2

PEAK PCAN-USB Adapter
Page 3

PEAK/STW CAN Interface Drivers
Page 4



PEAK OEM Drivers for PCAN-USB Adapter

Introduction

The **PEAK OEM Drivers** allow the computer to use the **PEAK PCAN-USB Adapter**. This guide describes the installation process for the PEAK USB 3.0 (May 2011) driver on a Windows 7 computer. The process may vary slightly with newer driver versions or different operating systems.

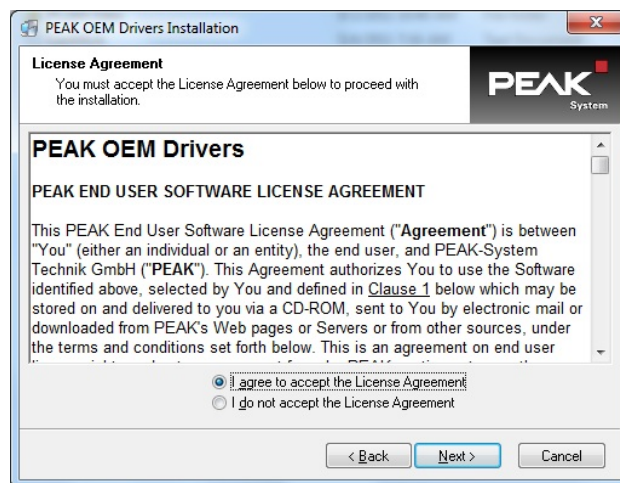
Before You Start

Before starting the installation process, make sure that:

- The computer is running Windows XP or newer and has an available USB port.
- You have administrative/install privileges on the computer.
- You have access to a PEAK PCAN-USB Adapter (sometimes called a “dongle”).
- You Unzip / Extract all the files from PEAK USB Dongle.zip on the CD/DVD.
 - The CD/DVD contains two zip files containing the latest software:
Peak Systems Technic – PCAN USB Dongle Driver.zip and **STW – PCAN USB Interface Driver.zip**.

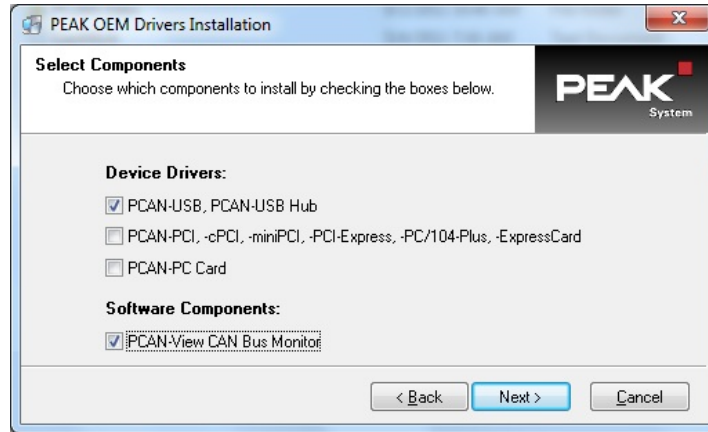
Installing the PEAK OEM USB Drivers

1. Unzip the latest **PEAK OEM** driver software for the PEAK Systems **PCAN-USB Adapter** as noted above.
2. Locate and run the driver installer—in this case, **PeakOemDrv.exe**.
 - If you are installing from a CD/DVD, the installer may start automatically.
 - If the installer does not start automatically:
 1. Unzip the following file: **Peak Systems Technic – PCAN USB Dongle Driver.zip**
 2. Locate **PeakOemDrv.exe** within the `\Disk` folder and run it.
3. If **User Account Control** appears, click **Yes** to allow the program to make changes.
 - An installation Welcome screen will appear.
4. Click **Next**.
 - The PEAK end user software license agreement will appear.

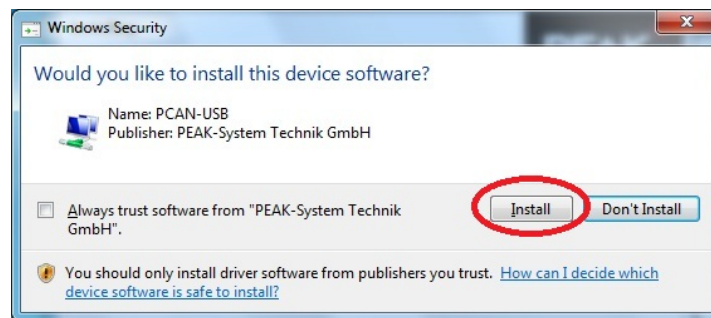


5. Select **I agree to accept the License Agreement** and click **Next**.
 - A Destination Directory screen will appear.

6. Click **Next** to install the drivers to the recommended default location.
 - A Select Components screen will appear.



7. Check the boxes next to **PCAN-USB, PCAN-USB Hub** and **PCAN-View CAN Bus Monitor**, then click **Next**.
 - A Select Program Manager Group Location screen will appear.
8. Select **Anyone who uses this computer (all users)**, then click **Next**.
 - A Ready to Install the Application screen will appear.
9. Click **Next**.
 - A Windows Security screen may appear. Otherwise, the installation will begin.
10. If **Windows Security** appears, click **Install**.



- An Installing screen will appear, and the driver installation will begin.
 - When the installation finishes, a screen will notify you that the driver has been successfully installed.
11. Click **Finish** to complete and exit the installation process. You must now install the USB Adapter.

Installing the PEAK PCAN-USB Adapter

1. Ensure that you have fully installed the PEAK OEM Drivers for the PEAK PCAN-USB Adapter.
2. Plug the PEAK PCAN-USB Adapter into one of the computer's USB ports.
 - Windows will detect the device in an alert at the lower-right corner of your desktop.
 - The alert will change to say "**PCAN-USB** Device driver software installed successfully."
3. Restart the computer if this is your first time installing the PEAK PCAN-USB Adapter.

You have successfully installed the PEAK OEM drivers for the PEAK PCAN-USB Adapter.

PEAK/STW CAN Interface Driver

Installation and Configuration

Introduction

The PEAK/STW CAN interface driver allows the computer to communicate with a braking controller through a PCAN interface and adapter. The driver software includes a suite of CAN utilities.

This guide describes the installation and configuration of the Nov. 2010 driver version on a Windows 7 computer. The process may vary with a different driver version or operating system.

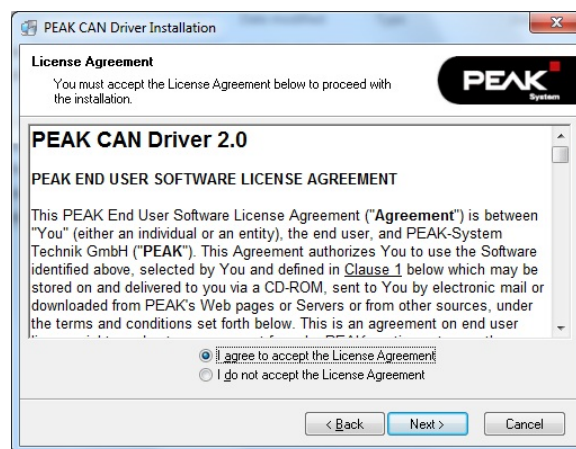
Before You Start

Before starting the installation process, make sure that:

- The computer is running Windows XP or newer and has an available USB port.
- You have administrative/install privileges on the computer.
- The PEAK OEM USB drivers are installed and the PEAK PCAN-USB Adapter is plugged into USB.
- You have Unzipped / extracted all the files from PEAK USB Dongle.zip on the CD/DVD:
 - **Peak Systems Technic – PCAN USB Dongle Driver.zip** and **STW – PCAN USB Interface Driver.zip**.

Installing the PEAK CAN USB Interface Drivers

1. Unzip the latest **PEAK CAN** driver software (sometimes referred to as the **STW CAN** driver, **PEAK/STW USB Interface Driver** or **STW PCAN USB Device Interface Driver**) as noted in *Before You Start* above.
2. Locate and run the driver installer—in this case, **pcandrv.exe**.
 - If you are installing from a CD/DVD, the installer may start automatically. If the installer does not start:
 1. Unzip the **STW - PCAN USB Interface Driver.zip** file if you have not already.
 2. Locate **pcandrv.exe** within the `\dlls\peakinst` folder and run it.
4. If **User Account Control** appears, click **Yes** to allow the program to make changes.
 - An installation Welcome screen will appear.
5. Click **Next**.
 - The PEAK end user software license agreement will appear.



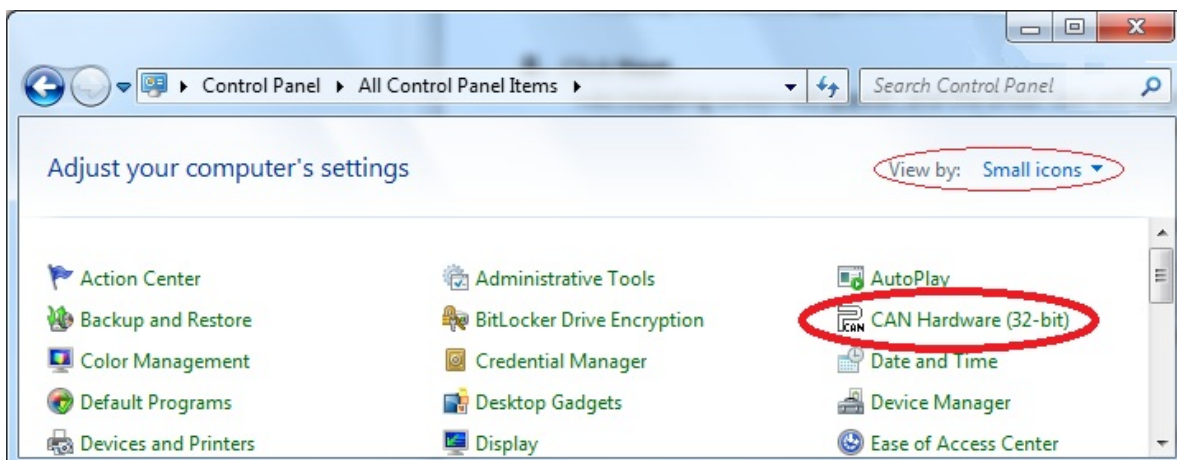
6. Select **I agree to accept the License Agreement** and click **Next**.

- An Online Help Language screen will appear.
7. Select **English** and click **Next**.
 - A Destination Directory screen will appear.
 8. Click **Next** to install the drivers to the recommended default location.
 - A Ready to Install the Application screen will appear.
 9. Click **Next**.
 - An Installing screen will appear, and the driver installation will begin and rapidly finish.
 - A screen will notify you that the driver “has been successfully installed.”
 10. Click **Finish** to complete and exit the installation process.
 - **You have successfully installed the PCAN-USB driver and software utilities.**
Next, you will have to configure the drivers and restart your computer.

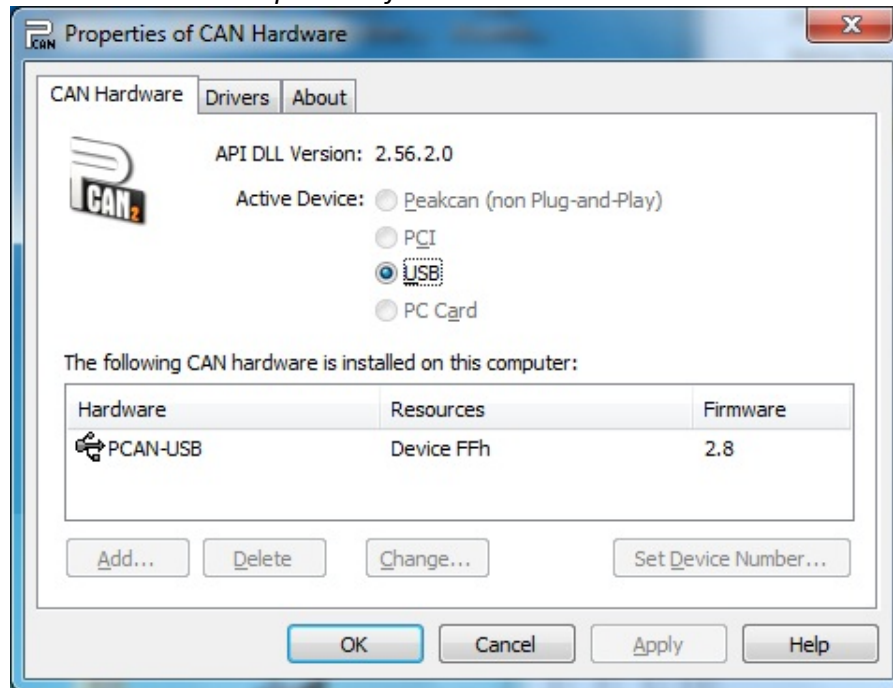
Configuring the Drivers and PCAN Interface



You must configure the PEAK/STW Interface Drivers and PCAN Interface settings so that the computer can successfully communicate brake controllers.

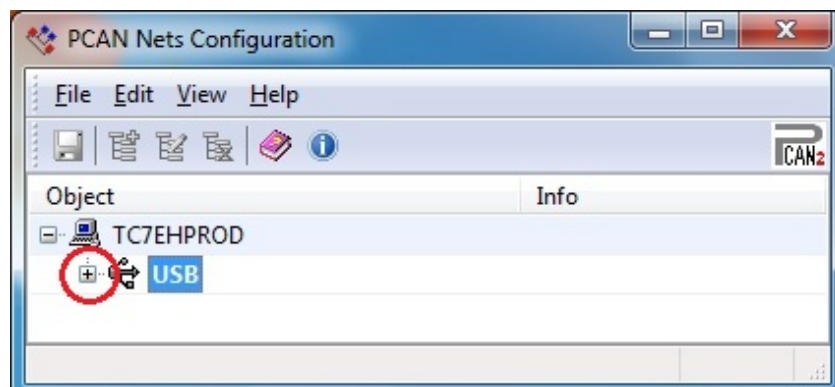
1. Make sure the PEAK PCAN-USB Adapter is plugged into a USB port and its drivers are installed.
2. Open the Windows **Control Panel**.



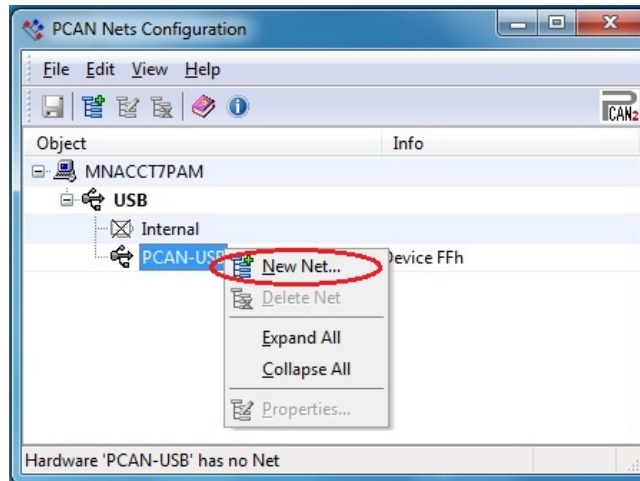
3. Next to **View by:**, switch to **Small icons** instead of Category.
In Windows XP, you may have to click **Switch to classic view**.
 - The view will change, and you will be able to see CAN Hardware in the control panel list.
4. Double-click **CAN Hardware**. Depending on your system, this may be 32- or 64-bit.
 - A Properties of CAN Hardware control panel will appear.

Properties of CAN Hardware screen

5. Ensure that **Active Device** is set to **USB** and that the **PCAN-USB** device is listed under **Hardware**. If the device is not listed, unplug the USB Adapter and plug it back in.
If the PCAN-USB device is still missing, reinstall or find an alternate version of the drivers.
6. Click **OK**.
 - The Properties of CAN Hardware window will disappear.
7. Open **PCAN Nets Configuration** from the Windows Start ( or ) menu. Locate it by clicking **Start** → **All Programs** → **PCAN** → **PCAN Nets Configuration**.
 - The PCAN Nets Configuration utility will appear.



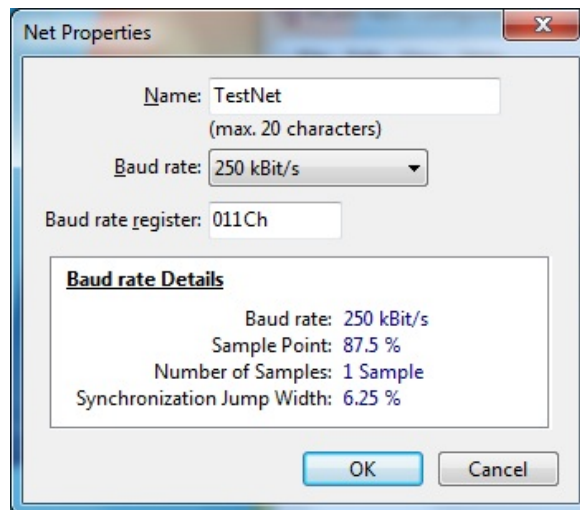
8. Click the small **+** to the left of **USB**.
 - “Internal” and the PCAN-USB device should appear, listed underneath USB.
 - If the device is not present, unplug and re-plug the USB Adapter, then restart Nets Config.

9. Right-click PCAN-USB and click New Net...

- A Net Properties window will appear.

10. Change the Name to Testnet and set the Baud rate to 250 kBit/s, then click OK.

- !!! NOTE:** 250 kBit/s may not be appropriate for some controller models.
Consult qualified personnel to learn the proper setting for your intended use.



- You will return to the PCAN Nets Configuration window.

11. Click  to save the configuration, or click File → Save All, then exit Nets Configuration.**12. Restart the computer.**

You have successfully installed and configured the PEAK/STW CAN Interface Drivers.

You have now finished installing the CAN bus Adapter and Interface Drivers.
You may now proceed to install the MICO Diagnostic Interface for your application.