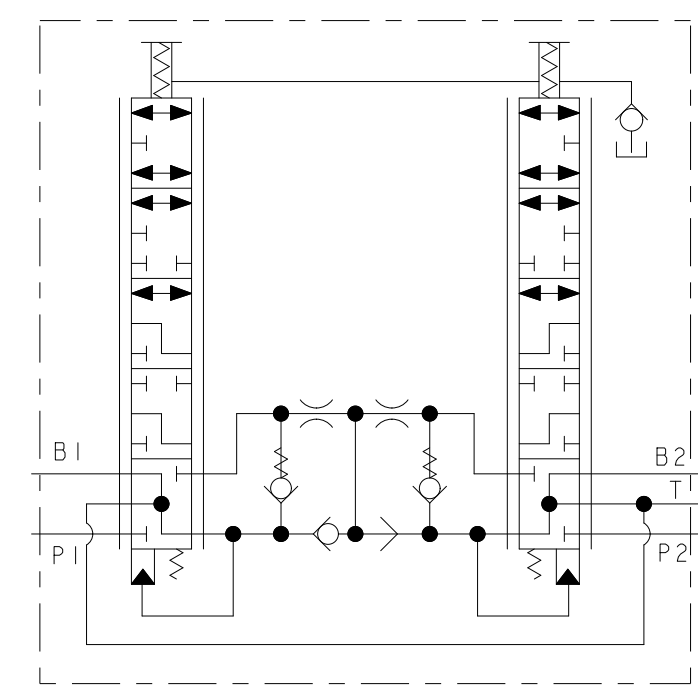
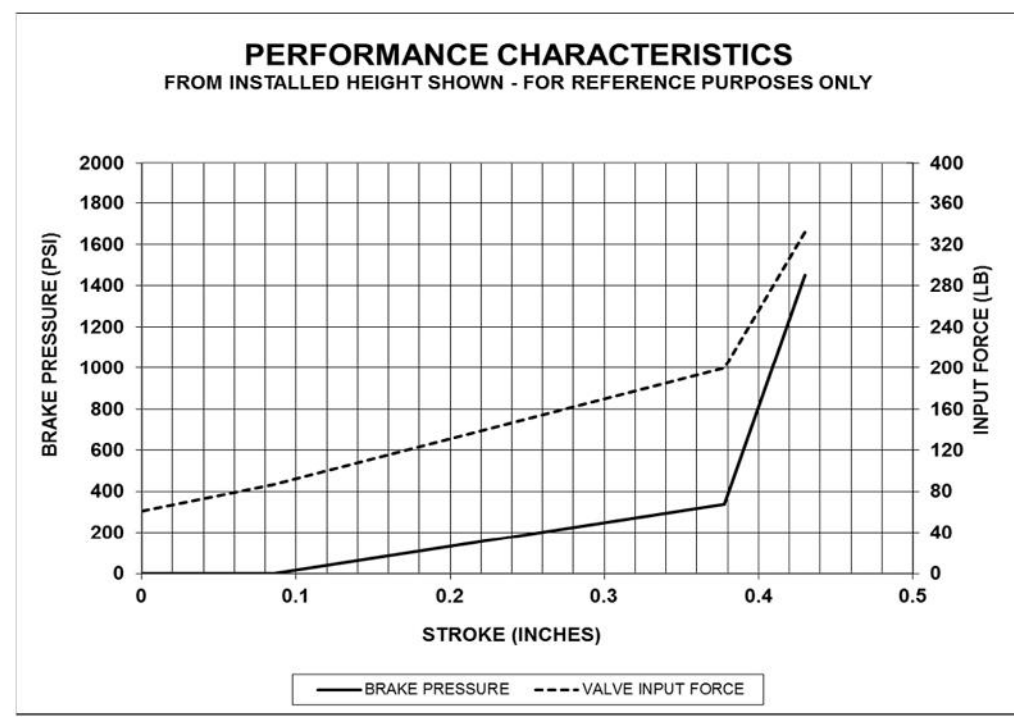
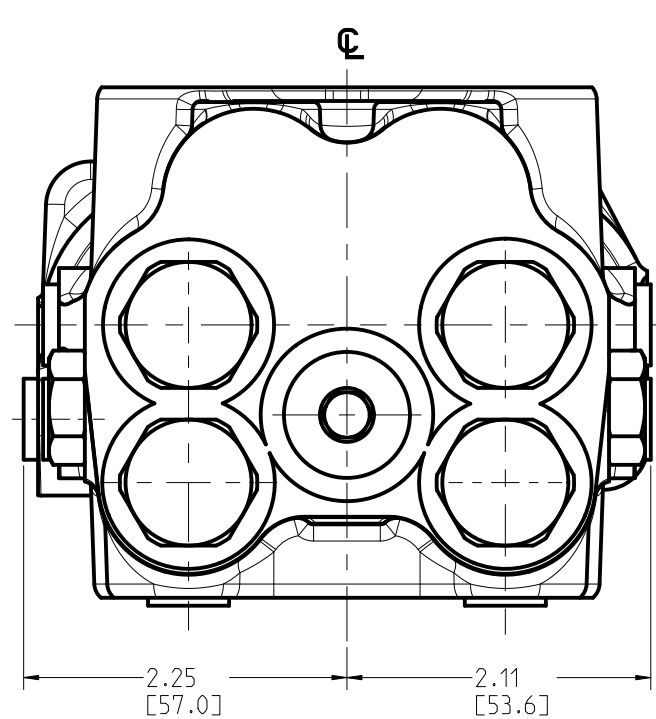
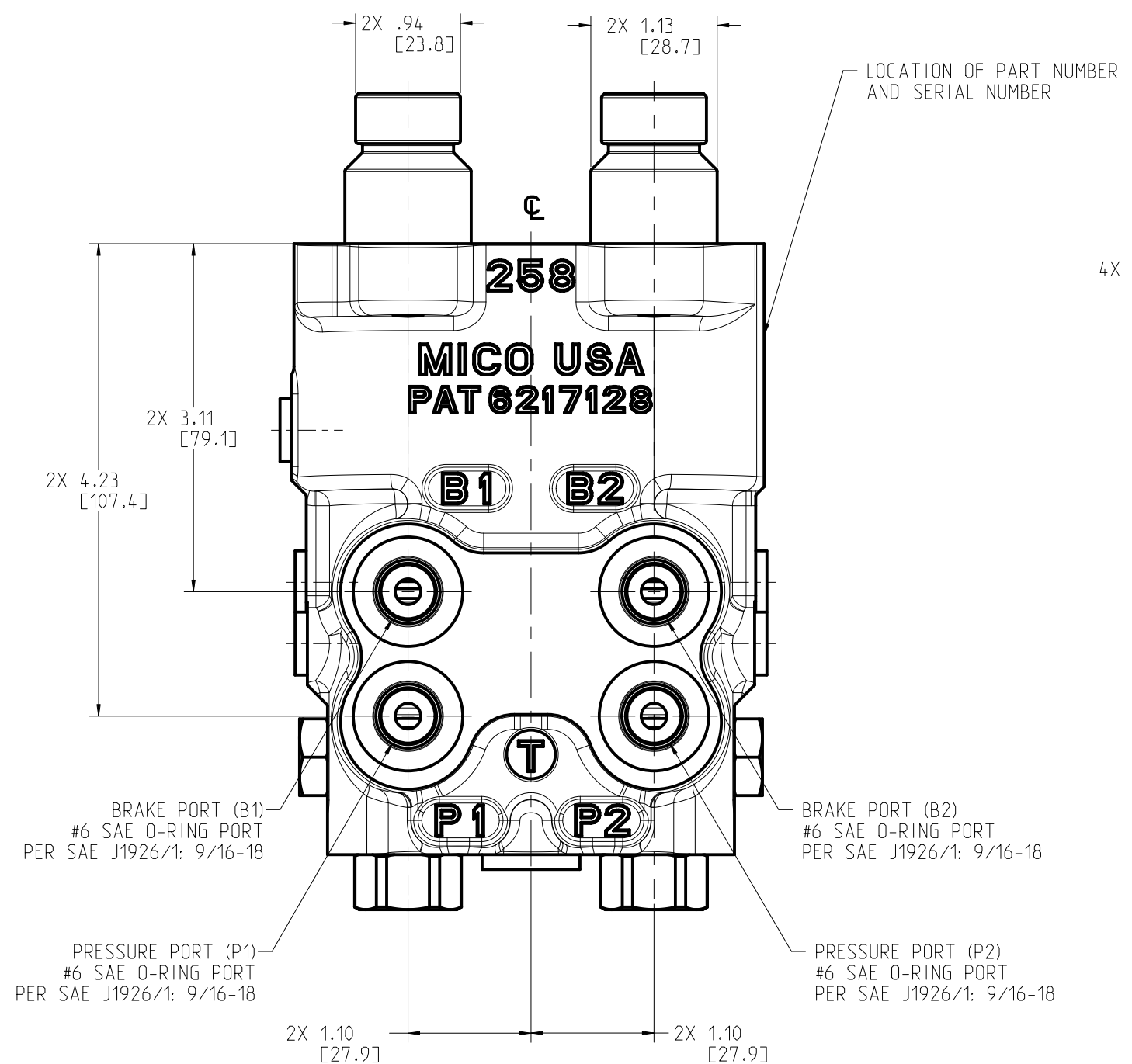
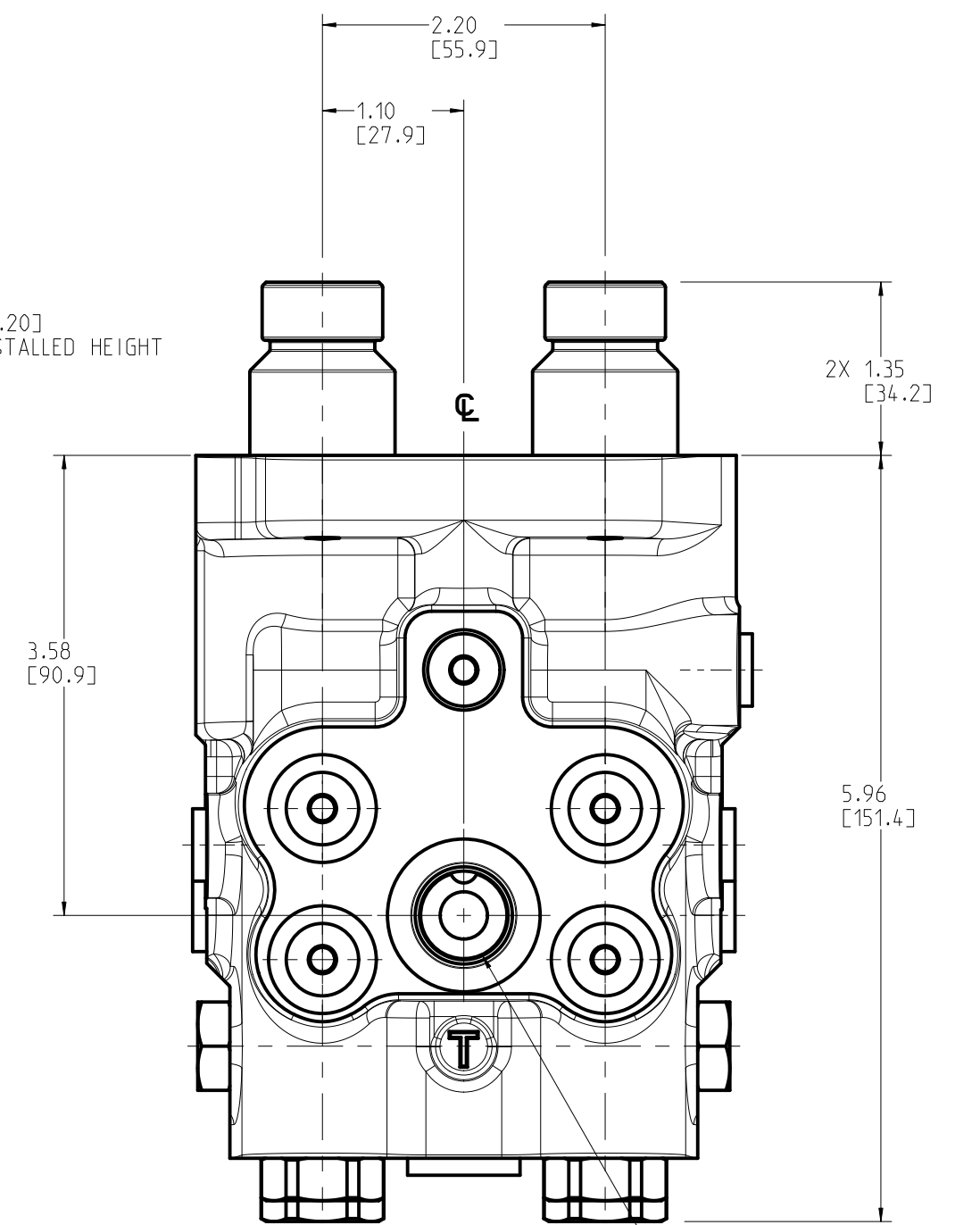
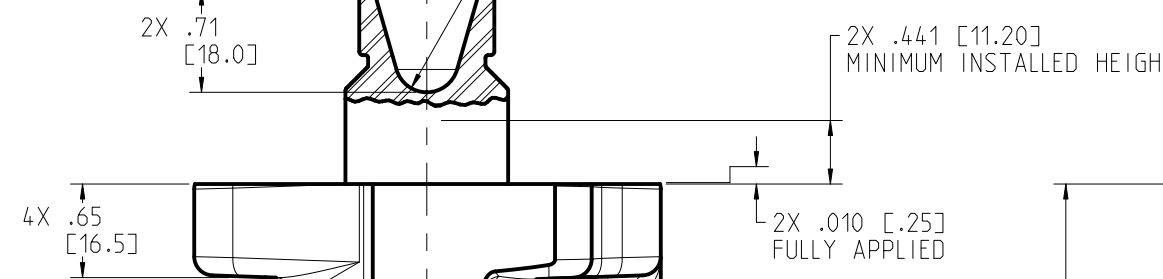
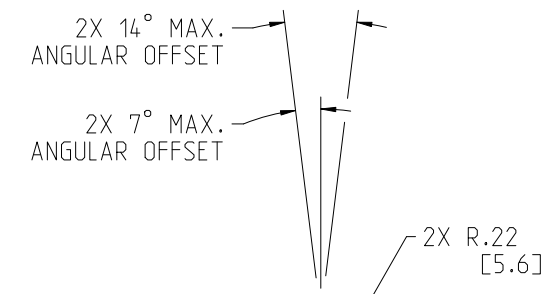
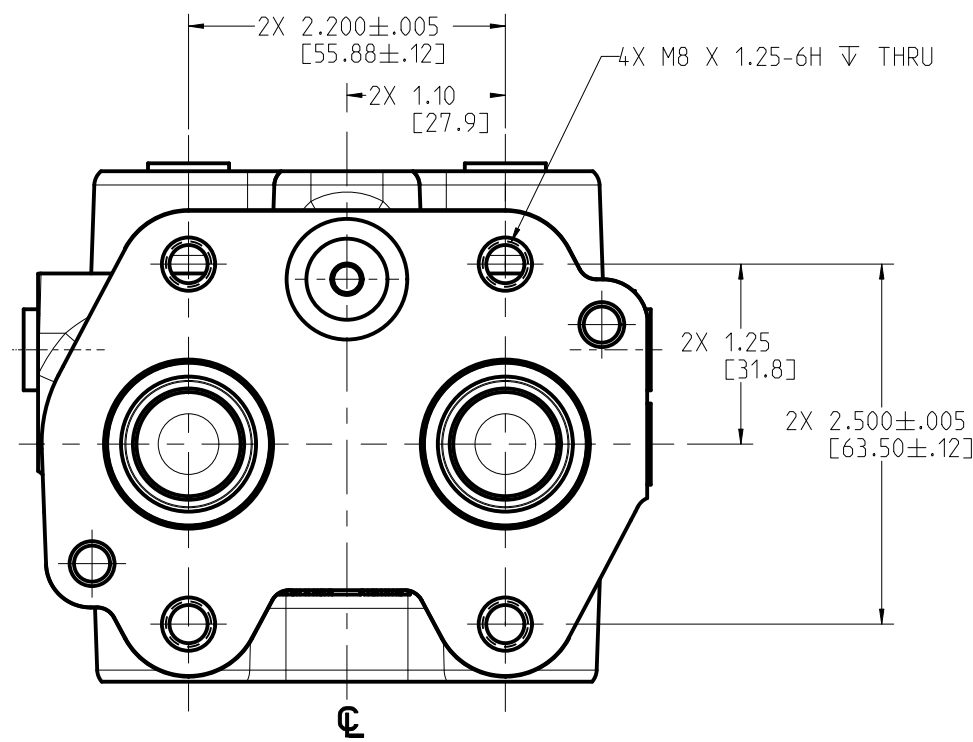


NOTES:

- 1) FOR USE WITH MINERAL BASE HYDRAULIC OIL ONLY.
- 2) DIMENSIONS MAY VARY BETWEEN UNITS AND ARE FOR REFERENCE PURPOSES ONLY. MILLIMETER VALUES MAY NOT BE AN EXACT CONVERSION OF INCH VALUES.
- 3) REPAIR KIT P/N 06-400-322.
- 4) SURFACE FINISH: PRIMER PAINT
- 5) MICO RECOMMENDS THE USE OF 32-570-092 BOOTS, 32-170-082 RETAINERS AND 30-020-196 PUSH RODS WITH THIS VALVE. A QUANTITY OF TWO OF EACH COMPONENT IS REQUIRED PER VALVE. VALVE INPUT PISTONS MUST BE PROTECTED FROM CONTAMINATION INGRESS.

PERFORMANCE CHARACTERISTICS:

- 1) BRAKE PRESSURE SETTING: 1450±50 PSI [100.0±3.4 bar] AT PORTS B1 & B2 WITH 2500 PSI [172 bar] INLET PRESSURE AT PORTS P1 & P2 AND 15 cSt OIL VISCOSITY.
- 2) MAXIMUM INLET PRESSURE 3000 PSI [207 bar].
- 3) MAXIMUM OPERATING TEMPERATURE IS 225°F.
- 4) FORCE TO ADVANCE INPUT PISTONS FROM INSTALLED POSITION SHOWN IS 61 LB [271 N] PER SIDE.
- 5) MINIMUM FORCE TO FULLY APPLY VALVE IS 332 LB [1477 N] PER SIDE.



INCH
(MILLIMETER)



COMPONENT AND SYSTEM RECOMMENDATIONS MADE BY MICO, INC. ARE BASED ON INFORMATION SUPPLIED BY POTENTIAL USER AND/OR SYSTEM DESIGNER. THE POTENTIAL USER AND/OR DESIGNER MUST MAKE FINAL ACCEPTANCE AND APPROVAL OF COMPONENTS AND SYSTEM AFTER TESTING PERFORMANCE ON AN ACTUAL APPLICATION FOR WHICH SYSTEM WAS DESIGNED.		MICO, INC. CLAIMS PROPRIETARY RIGHTS TO THE MATERIAL DISCLOSED IN THIS DOCUMENT. THIS DOCUMENT IS PROVIDED IN CONFIDENCE AND MAY NOT BE REPRODUCED OR DISCLOSED WITHOUT WRITTEN PERMISSION FROM MICO, INC. COPYRIGHT MICO, INC. ALL RIGHTS RESERVED.	
SCALE 0.750	TITLE DUAL BRAKE VALVE	SIZE C	DRAWING NUMBER 20-100-945
DWN JH 2016-05-10	APVD PROD ENGRG DPD 2016-09-08	REV 1	CUSTOMER COPY
X NO X09-3072-000	APVD ENGRG JC 2016-09-06	REV 2	