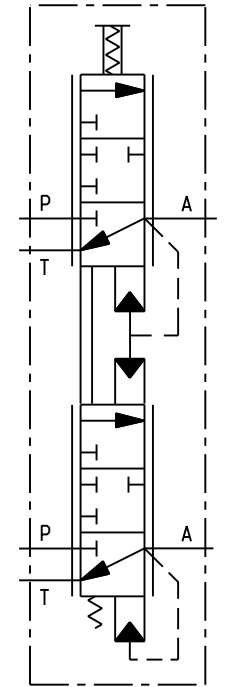
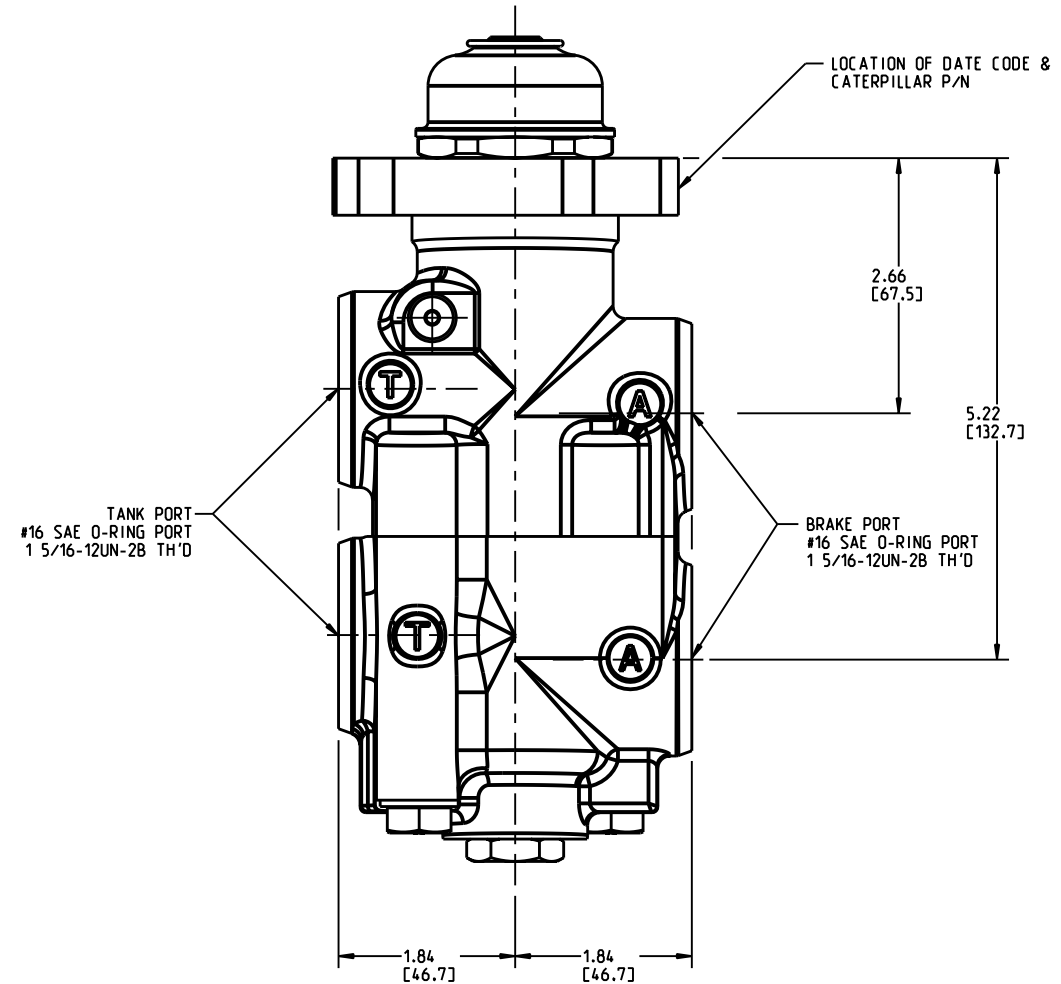
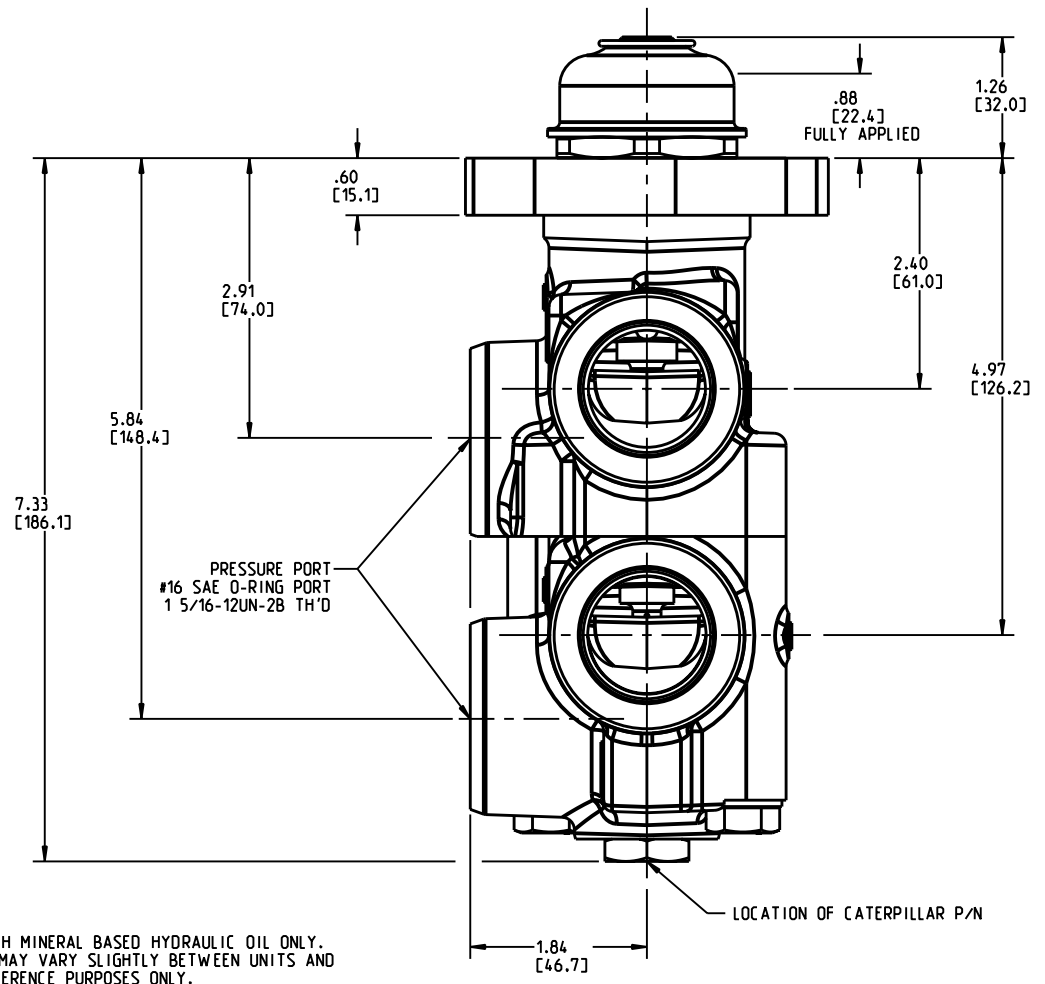


SUGGESTED MOUNTING HOLE
 SCALE: NONE



INCH
 [MILLIMETER]

- NOTES:**
- 1) FOR USE WITH MINERAL BASED HYDRAULIC OIL ONLY.
 - 2) DIMENSIONS MAY VARY SLIGHTLY BETWEEN UNITS AND ARE FOR REFERENCE PURPOSES ONLY.
 - 3) WHEN INSTALLED, PLUNGER MUST NOT BE ADVANCED.
 - 4) WHEN MOUNTING, RECOMMEND USING M10 X 1.5 X 30mm LONG BOLTS AND HARDENED STEEL WASHERS. TORQUE BOLTS TO 17-27 LB-FT.
 - 5) REPAIR KIT P/N 06-400-211.
 - 6) CATERPILLAR P/N 200-0866.

- PERFORMANCE CHARACTERISTICS:**
- 1) BRAKE PRESSURE SETTING IS 685±25 PSI.
 - 2) PRESSURE FROM THE UPPER BRAKE PORT IS APPROXIMATELY 25 PSI HIGHER THAN THE PRESSURE FROM THE LOWER BRAKE PORT.



COMPONENT AND SYSTEM RECOMMENDATIONS MADE BY MICO, INC ARE BASED ON INFORMATION SUPPLIED BY POTENTIAL USER AND/OR SYSTEM DESIGNER. THE POTENTIAL USER AND/OR DESIGNER MUST MAKE FINAL ACCEPTANCE AND APPROVAL OF COMPONENTS AND SYSTEM AFTER TESTING PERFORMANCE ON AN ACTUAL APPLICATION FOR WHICH SYSTEM WAS DESIGNED.

MICO, INC CLAIMS PROPRIETARY RIGHTS TO THE MATERIAL DISCLOSED IN THIS DOCUMENT. THIS DOCUMENT IS PROVIDED IN CONFIDENCE AND MAY NOT BE REPRODUCED OR DISCLOSED WITHOUT WRITTEN PERMISSION FROM MICO, INC. COPYRIGHT MICO, INC. ALL RIGHTS RESERVED.

SCALE	TITLE			
0.500	VALVE ASSEMBLY			
DWN JJH 04-Jan-05	APVD PROD ENGRG	SIZE	DRAWING NUMBER	REV
X NO	APVD ENGRG BSW	B	20-100-694	C
			CUSTOMER COPY	1 0°