

**NOTES:**

1. TO BE USED WITH MINERAL BASE HYDRAULIC OIL ONLY.
2. DIMENSIONS MAY VARY BETWEEN UNITS AND ARE FOR REFERENCE PURPOSES ONLY. MILLIMETER VALUES MAY NOT BE AN EXACT CONVERSION OF INCH VALUES.
3. REPAIR KIT P/N 12-501-469.
4. SEAL KIT P/N 12-501-471.
5. BLEEDER SCREWS PACKAGED SEPARATELY WITH BRAKE. INSTALL IN BLEEDER SCREWS AND TORQUE TO 9-15 LBFT.
6. M14 MOUNTING BOLTS AND WASHERS (4 EACH) PACKAGED SEPARATELY WITH BRAKE. USE LOCTITE #242 OR EQUIVALENT ON MOUNTING BOLTS AND TORQUE TO 110-130 LBFT.

**SPECIFICATIONS:**

TYPE: WET, MULTIPLE DISC BRAKE, SPRING APPLY HYDRAULIC RELEASE (WITH SERVICE OVERRIDE)

FAILSAFE SECTION:  
TORQUE RATING: 25000 LBIN STATIC BREAKAWAY TORQUE AT 0 PSI BACK PRESSURE  
RELEASE PRESSURE: 370 PSI INITIAL, 440 PSI FULL, 1500 PSI MAXIMUM (CONTINUOUS)  
RELEASE VOLUME: 1.00 CUIN MIN., 2.00 CUIN MAX.

SERVICE OVERRIDE SECTION:  
TORQUE RATING: 20000 LBIN AT 1200 PSI  
MAXIMUM INPUT PRESSURE: 1500 PSI  
SERVICE BRAKE VOLUME: .23 CUIN. MIN., .46 CUIN MAX.

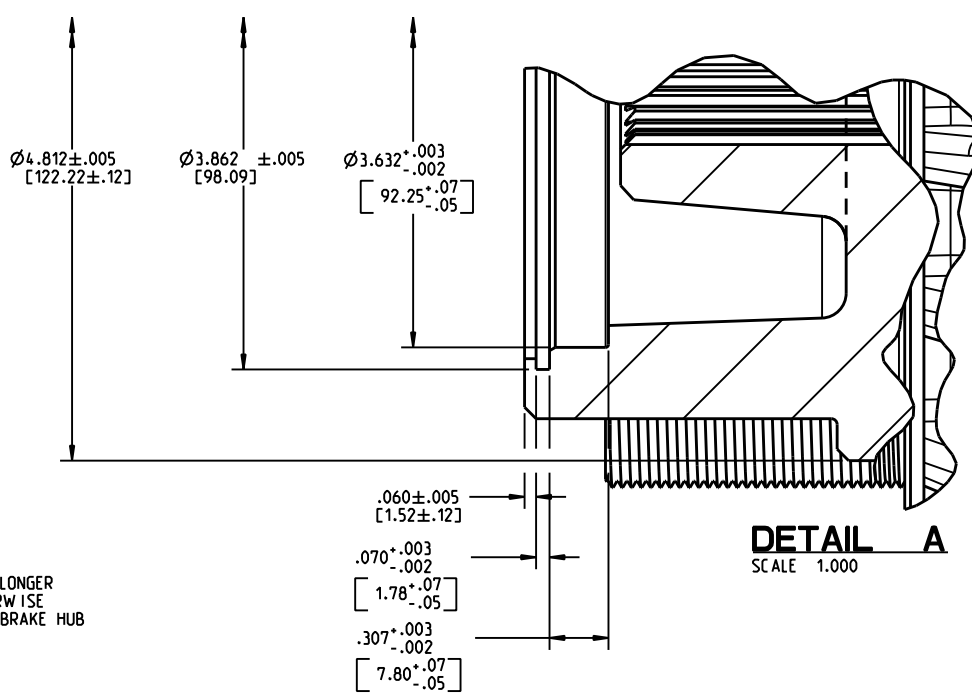
MAXIMUM SPEED: 300 RPM  
APPROXIMATE WEIGHT: 104 LB.

**COOLING OIL RECOMMENDATIONS:**

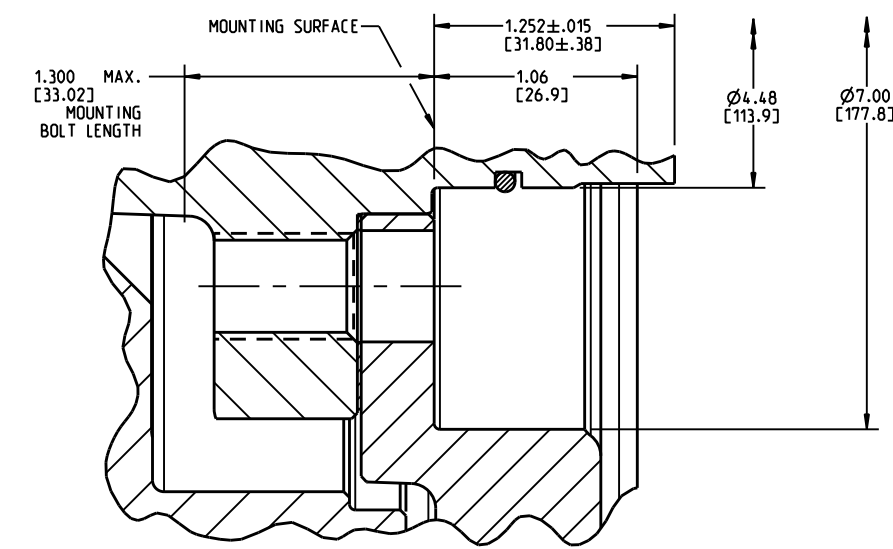
OIL TYPE: MINERAL BASE HYDRAULIC OIL SUCH AS MOBIL DTE 24, CITGO A.W. 32 OR EQUIVALENT  
FLOW THROUGH CAPACITY: .25 - .50 GPM  
MAXIMUM CASE PRESSURE: 10 PSI  
SUMP OIL VOLUME: 5 FL. OZ.

**CAUTION:**

THE MOUNTING BOLTS MUST NOT BE LONGER THAN THE DIMENSION SHOWN, OTHERWISE INTERFERENCE MAY OCCUR AND THE BRAKE HUB MAY NOT ROTATE FREELY.



**DETAIL A**  
SCALE 1.000



**SECTION A-A**  
SCALE 1.000

**INCH**  
**(MILLIMETER)**



COMPONENT AND SYSTEM RECOMMENDATIONS MADE BY MICO, INC ARE BASED ON INFORMATION SUPPLIED BY POTENTIAL USER AND/OR SYSTEM DESIGNER. THE POTENTIAL USER AND/OR DESIGNER MUST MAKE FINAL ACCEPTANCE AND APPROVAL OF COMPONENTS AND SYSTEM AFTER TESTING PERFORMANCE ON AN ACTUAL APPLICATION FOR WHICH SYSTEM WAS DESIGNED.		MICO, INC CLAIMS PROPRIETARY RIGHTS TO THE MATERIAL DISCLOSED IN THIS DOCUMENT. THIS DOCUMENT IS PROVIDED IN CONFIDENCE AND MAY NOT BE REPRODUCED OR DISCLOSED WITHOUT WRITTEN PERMISSION FROM MICO, INC. COPYRIGHT MICO, INC. ALL RIGHTS RESERVED.	
SCALE 0.500	TITLE WHEEL END BRAKE	SIZE C	REV 1
DWN JRA 2009-11-13	APVD PROD ENGRG PJS 2009-12-01	DRAWING NUMBER 13-589-008	CUSTOMER COPY
X NO XB000-130	APVD ENGRG BLF 2009-11-30		