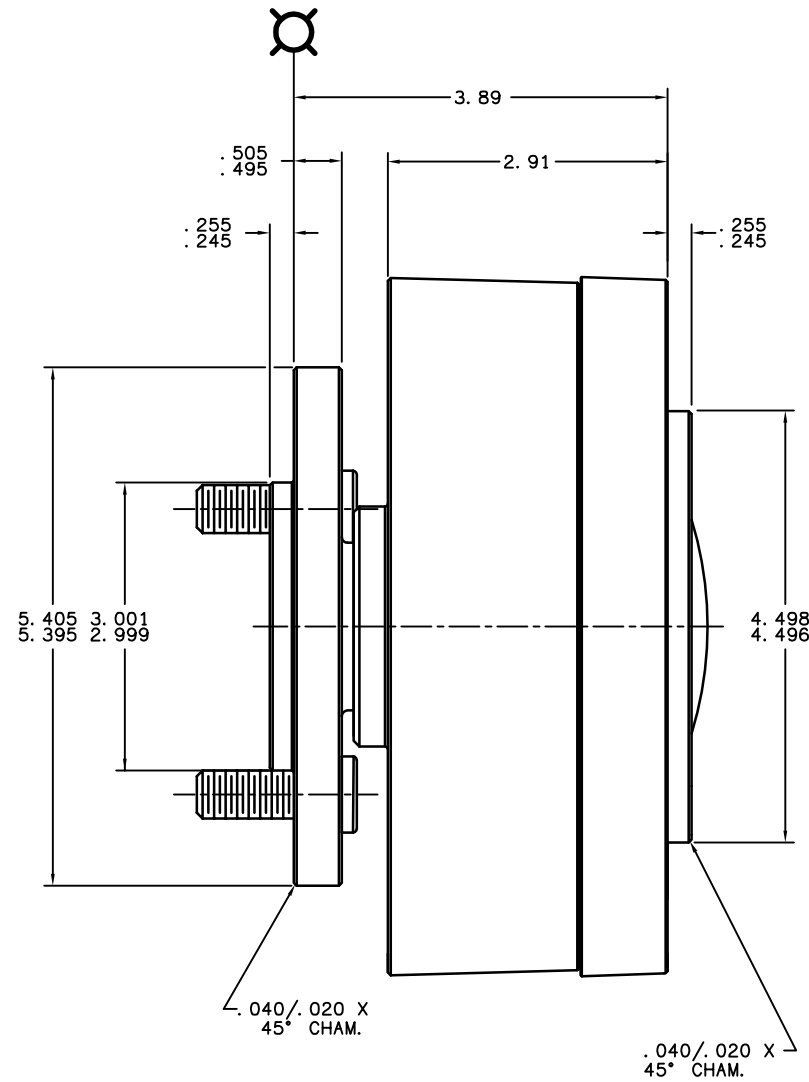
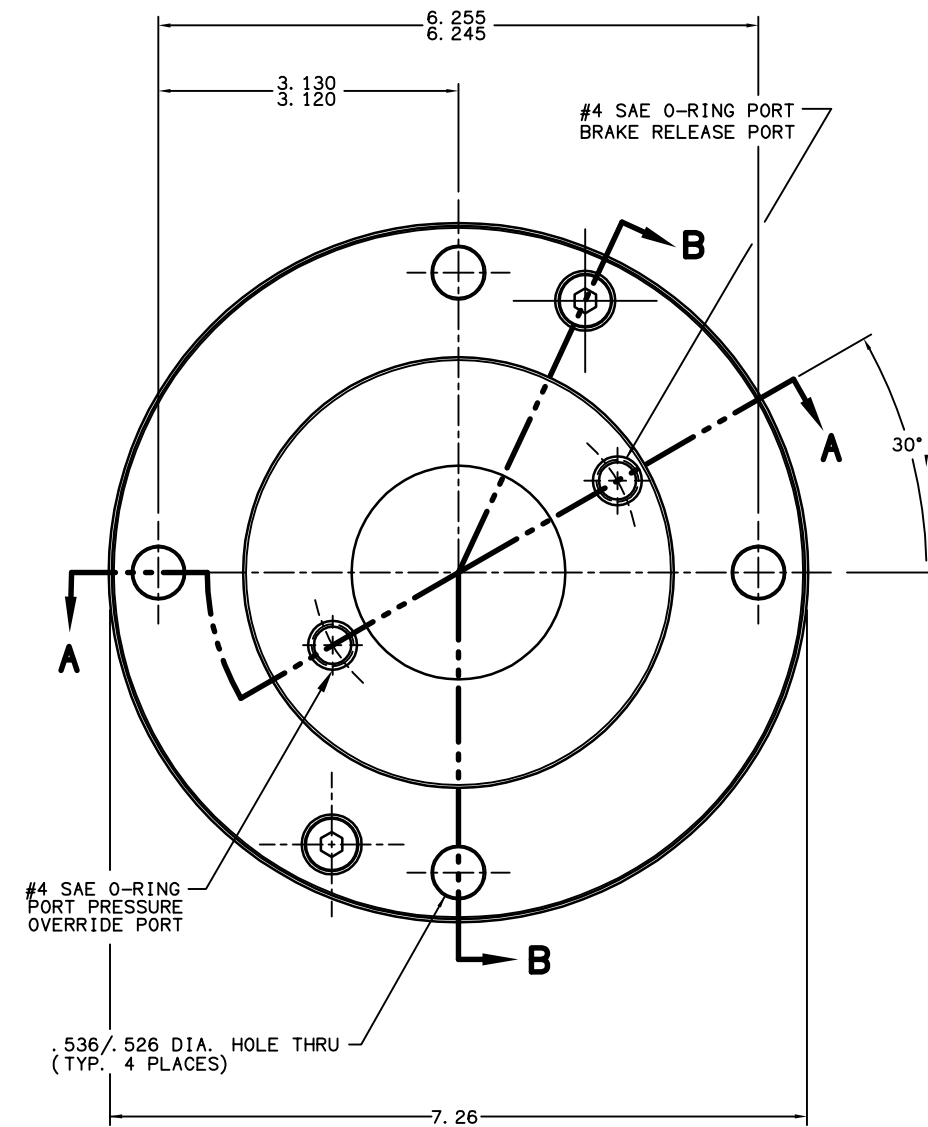


(5) 1/2"-20UNF-2B STUDS ON A
4.500 DIA. B.C. AS SHOWN.



SECTION A-A



NOTES:

- *) * REPAIR KIT P/N 12-501-452
- *) BRAKE TO BE PAINTED PER SPECIFICATION 99-980-001

SPECIFICATIONS:

TYPE: DRY MULTIPLE DISC BRAKE, SPRING APPLY, HYDRAULIC RELEASE

FAILSAFE SECTION:

TORQUE RATING: DRY 3,500 LB-IN. STATIC (BREAKAWAY) AT 0 PSI BACK PRESSURE

RELEASE PRESSURE: 300 PSI INITIAL, 340 PSI FULL
3,000 PSI MAXIMUM (CONTINUOUS)

SERVICE OVERRIDE SECTION:

TORQUE RATING: 2,600 LB-IN (DRY) @ 1,000 PSI

MAXIMUM INPUT PRESSURE: 1000 P. S. I.

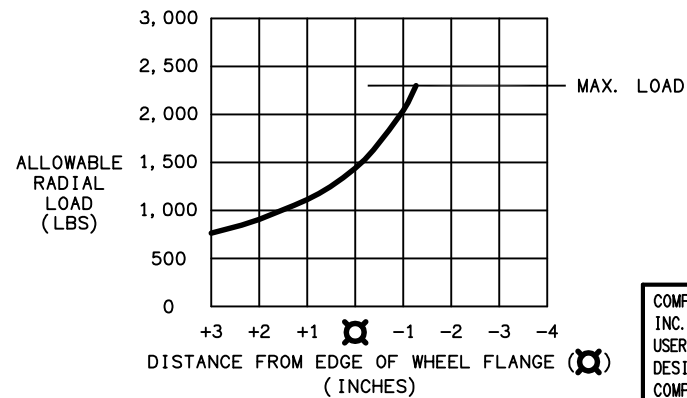
MAXIMUM SPEED: 200 RPM

LINING MATERIAL: NON-METALLIC BASED

APPROXIMATE WEIGHT: 27 LBS.

FOR USE WITH MINERAL BASE HYDRAULIC OIL ONLY.

LOAD CAPACITY @ 100 RPM AND B10 = 6,500 HRS
325 RPM AND B10 = 2,000 HRS



MICO RECOMMENDS USING A MINIMUM OF (4) 1/2-13UNC GRADE 5 MOUNTING BOLTS TORQUED TO 50-60 LB. FT.



| | | | |
|---------------------------|---------|---------------------------|----------|
| TITLE MINI WHEEL BRAKE | | | |
| SCALE 1:2 | CHECKED | PART NUMBER 13-587-090 | REV D |
| DRN A0 04/27/07 | APP ENG | CUSTOMER COPY | |

COMPONENT AND SYSTEM RECOMMENDATIONS MADE BY MICO, INC. ARE BASED ON INFORMATION SUPPLIED BY POTENTIAL USER AND/OR SYSTEM DESIGNER. THE POTENTIAL USER AND/OR DESIGNER MUST MAKE FINAL ACCEPTANCE AND APPROVAL OF COMPONENTS AND SYSTEM AFTER TESTING PERFORMANCE ON AN ACTUAL APPLICATION FOR WHICH SYSTEM WAS DESIGNED.

MICO, INC. CLAIMS PROPRIETARY RIGHTS TO THE MATERIAL DISCLOSED IN THIS DOCUMENT. THIS DOCUMENT IS PROVIDED IN CONFIDENCE AND MAY NOT BE REPRODUCED OR DISCLOSED WITHOUT WRITTEN PERMISSION FROM MICO, INC. COPYRIGHT MICO, INC. ALL RIGHTS RESERVED.