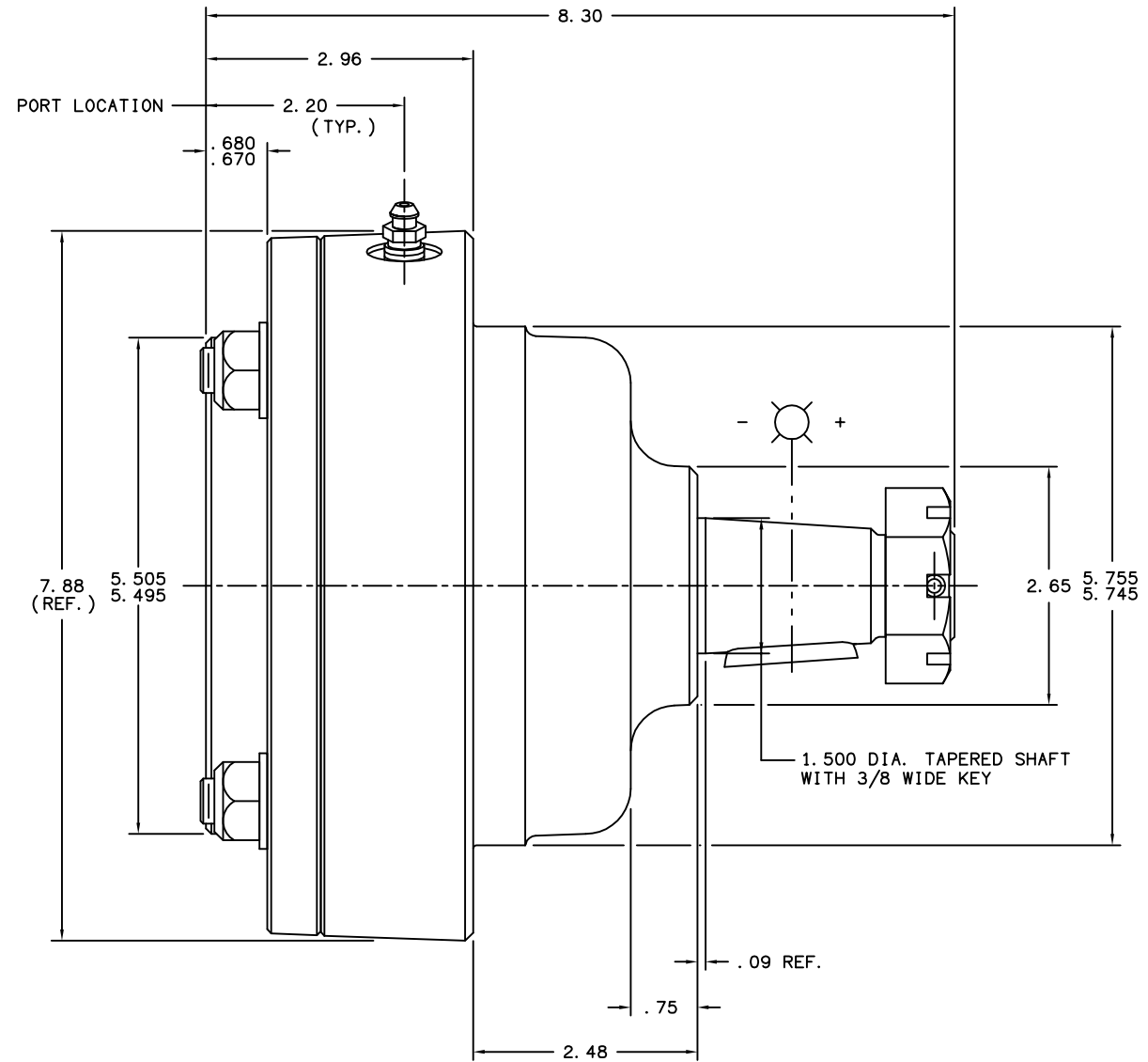
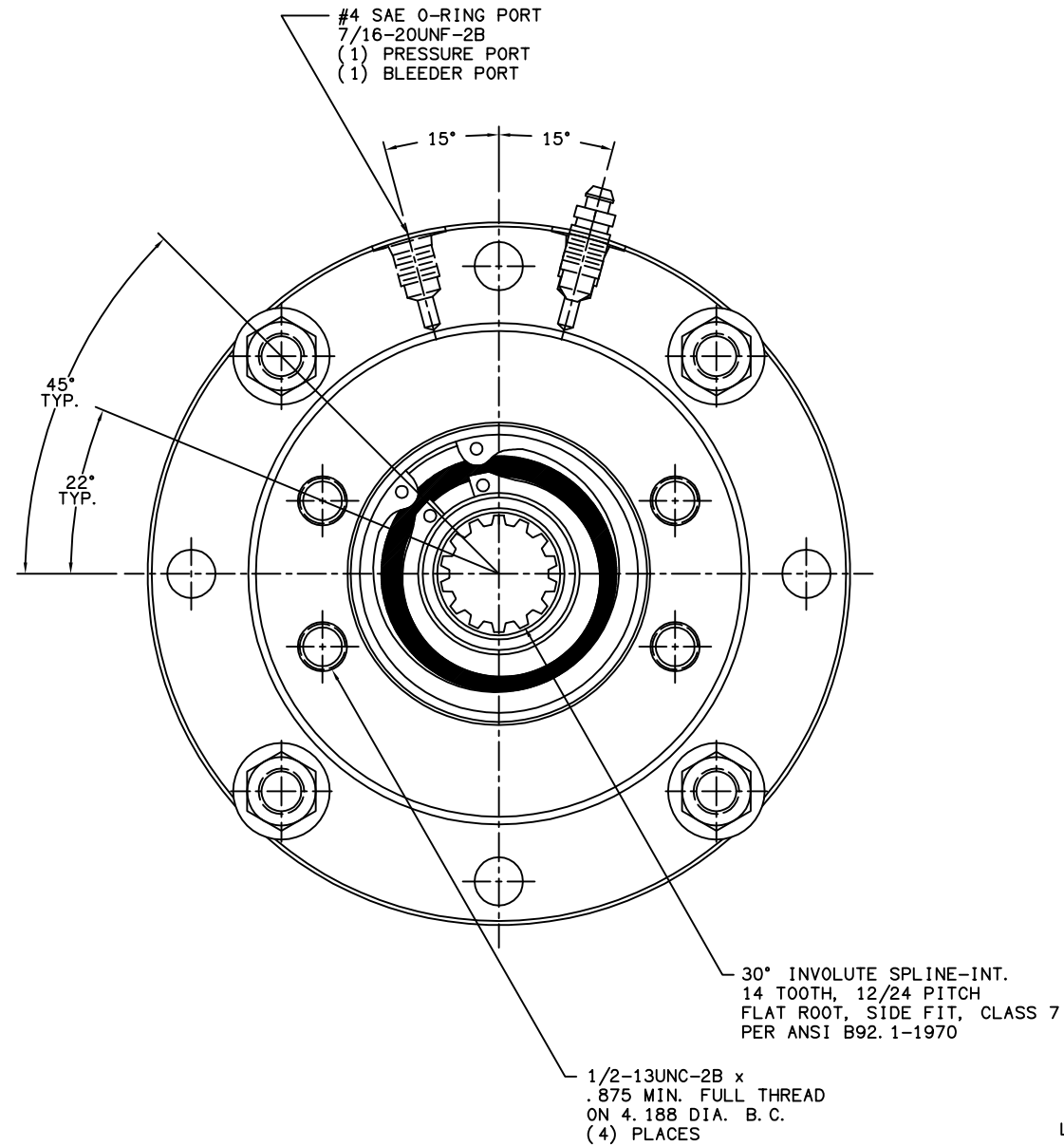


PART NUMBER
13-587-084
NPI OR ECN NO.
ECN 000113



NOTES:

1. LINING REPAIR KIT P/N 12-501-302
2. BEARING REPAIR KIT P/N 12-501-303
3. O-RING REPAIR KIT P/N 12-501-304
4. SPRING REPAIR KIT P/N 12-501-305

SPECIFICATIONS:

TYPE: DRY MULTIPLE DISC BRAKE, SPRING APPLY, HYDRAULIC RELEASE.

TORQUE RATING: 15,000 IN. LBS. STATIC (BREAKAWAY) AT 0 PSI BACK PRESSURE.

RELEASE PRESSURE: 390 PSI INITIAL, 580 PSI FULL.

MAXIMUM OPERATING PRESSURE: 3,000 PSI.

MAXIMUM SPEED: 1,000 RPM.

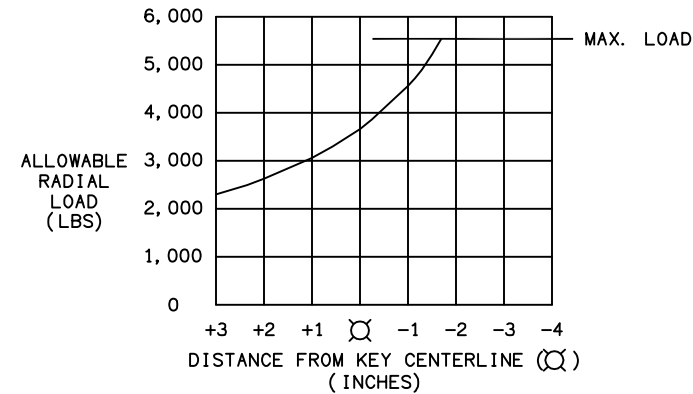
THRUST LOAD CAPACITY: 1,100 LBS. MAX. @ 100 RPM AND 2,000 HRS. B₁₀ LIFE.
(BASED ON CONSTANT 2,900 LBS. SIDE LOAD AT l_k OF KEY.)

LINING MATERIAL: SINTERED BRONZE.

APPROXIMATE WEIGHT: 38 LBS.

FOR USE WITH MINERAL BASE HYDRAULIC OIL ONLY.

LOAD CAPACITY @ 100 RPM AND B₁₀ = 6,500 HRS
325 RPM AND B₁₀ = 2,000 HRS



TITLE WHEEL BRAKE

COMPONENT AND SYSTEM RECOMMENDATIONS MADE BY MICO, INC. ARE BASED ON INFORMATION SUPPLIED BY POTENTIAL USER AND/OR SYSTEM DESIGNER. THE POTENTIAL USER AND/OR DESIGNER MUST MAKE FINAL ACCEPTANCE AND APPROVAL OF COMPONENTS AND SYSTEM AFTER TESTING PERFORMANCE ON AN ACTUAL APPLICATION FOR WHICH SYSTEM WAS DESIGNED.

MICO, INC. CLAIMS PROPRIETARY RIGHTS TO THE MATERIAL DISCLOSED IN THIS DOCUMENT. THIS DOCUMENT IS PROVIDED IN CONFIDENCE AND MAY NOT BE REPRODUCED OR DISCLOSED WITHOUT WRITTEN PERMISSION FROM MICO, INC. COPYRIGHT MICO, INC. ALL RIGHTS RESERVED.

SCALE 1:2	CHECKED	PART NUMBER 13-587-084	REV D
DRN LH 09/15/03	APP ENG GAA 01/13/05	CUSTOMER COPY	