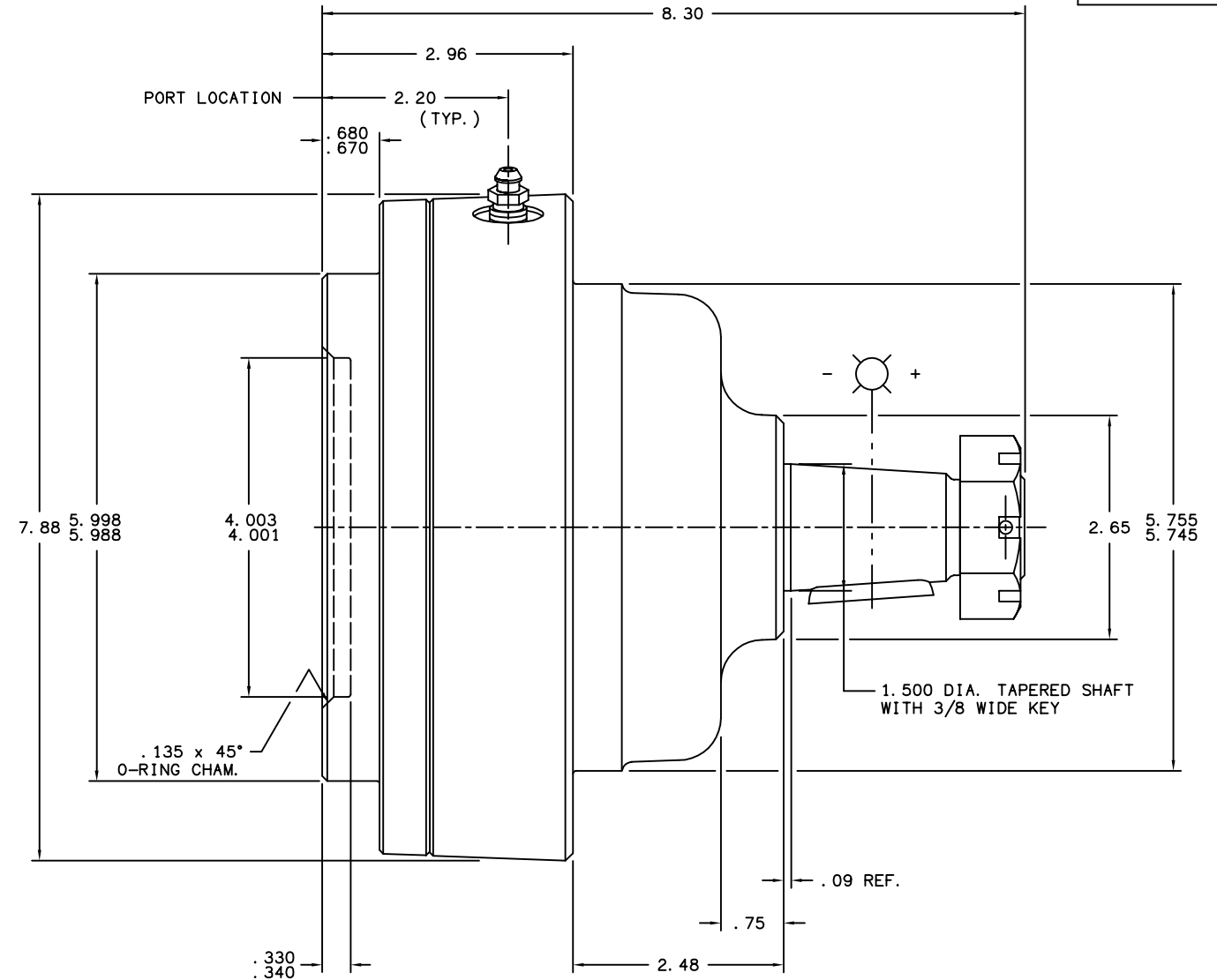


12 TOOTH, 12/24 PITCH SPLINE
(CHAR-LYNN 2,000 BEARINGLESS)

1/2-13UNC-2B x
.875 MIN. FULL THREAD
ON 5.000 DIA. B.C.
(4) PLACES



INSTALLATION INFORMATION:

- THIS BRAKE IS DESIGNED TO MOUNT WITH THE CHAR-LYNN 2,000 SERIES BEARINGLESS MOTOR. (SLEEVE BEARING NOT REQUIRED.)
- IF THE MOTOR CASE DRAIN IS USED, THE DRAIN LINE MUST BE ROUTED SUCH THAT THE SPLINE AREA IS LUBRICATED AT ALL TIMES.
- REFER TO THE MOTOR INSTALLATION INSTRUCTIONS FOR FURTHER INFORMATION.

NOTES:

- LINING REPAIR KIT P/N 12-501-302
- BEARING REPAIR KIT P/N 12-501-376
- O-RING REPAIR KIT P/N 12-501-304
- SPRING REPAIR KIT P/N 12-501-305

SPECIFICATIONS:

TYPE: DRY MULTIPLE DISC BRAKE, SPRING APPLY, HYDRAULIC RELEASE.

TORQUE RATING: 8,000 IN. LBS. STATIC (BREAKAWAY) AT 0 PSI BACK PRESSURE.

RELEASE PRESSURE: 210 PSI INITIAL, 310 PSI FULL.

MAXIMUM OPERATING PRESSURE: 3,000 PSI.

MAXIMUM SPEED: 1,000 RPM.

THRUST LOAD CAPACITY: 1,100 LBS. MAX. @ 100 RPM AND 2,000 HRS. B₁₀ LIFE. (BASED ON CONSTANT 2,900 LBS. SIDE LOAD AT C OF KEY.)

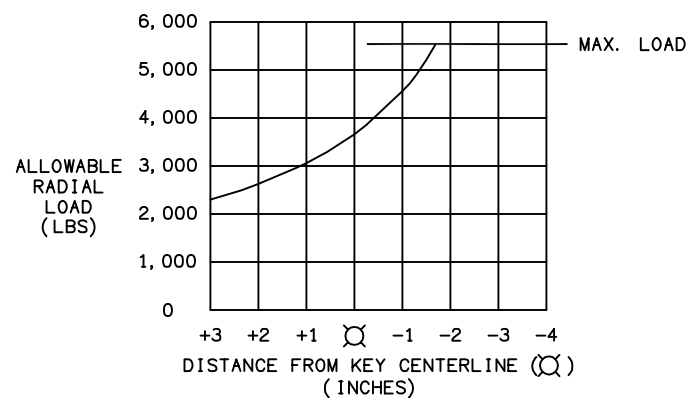
APPROXIMATE WEIGHT: 38 LBS.

FOR USE WITH MINERAL BASE HYDRAULIC OIL ONLY.

CAUTION:

CASE PRESSURE BETWEEN THE MOTOR AND BRAKE MUST NOT EXCEED 90 PSI.

LOAD CAPACITY @ 100 RPM AND B₁₀ = 6,500 HRS
325 RPM AND B₁₀ = 2,000 HRS



COMPONENT AND SYSTEM RECOMMENDATIONS MADE BY MICO, INC ARE BASED ON INFORMATION SUPPLIED BY POTENTIAL USER AND/OR SYSTEM DESIGNER. THE POTENTIAL USER AND/OR DESIGNER MUST MAKE FINAL ACCEPTANCE AND APPROVAL OF COMPONENTS AND SYSTEM AFTER TESTING PERFORMANCE ON AN ACTUAL APPLICATION FOR WHICH SYSTEM WAS DESIGNED.

MICO, INC CLAIMS PROPRIETARY RIGHTS TO THE MATERIAL DISCLOSED IN THIS DOCUMENT. THIS DOCUMENT IS PROVIDED IN CONFIDENCE AND MAY NOT BE REPRODUCED OR DISCLOSED WITHOUT WRITTEN PERMISSION FROM MICO, INC. COPYRIGHT MICO, INC. ALL RIGHTS RESERVED.

mico North Mankato, Minnesota USA				
SCALE 1:2	TITLE MULTIPLE DISC WHEEL BRAKE WH-501280-L2	SIZE B	DRAWING NUMBER 13-587-006	REV E
DWN G. J. 6/10/98	APVD PROD ENGRG			
X NO	APVD ENGRG GAA 04/26/04		CUSTOMER COPY	