

**NOTES:**

- FOR USE WITH MINERAL BASE HYDRAULIC OIL ONLY.
- DIMENSIONS MAY VARY SLIGHTLY AND ARE FOR REFERENCES PURPOSE ONLY. MILLIMETER VALUES MAY NOT BE AN EXACT CONVERSION OF INCH VALUES.
- O-RING REPAIR KIT P/N 12-501-249
- BEARING KIT P/N 12-501-250
- SPRING REPAIR KIT P/N 12-501-251
- LINING REPAIR KIT P/N 12-501-306

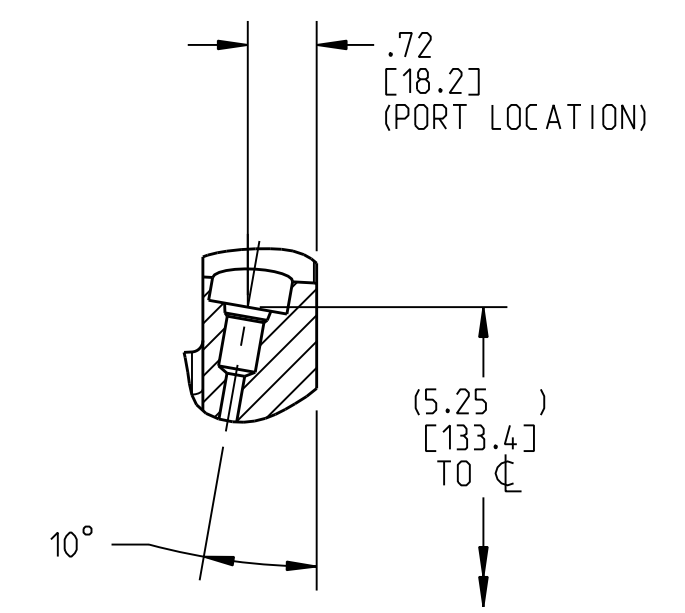
**SPECIFICATIONS:**

TYPE:	WET MULTIPLE DISC BRAKE, SPRING APPLY, HYDRAULIC RELEASE
TORQUE RATING:	WET 16,000 LB-IN STATIC (BREAKAWAY) AT 0 PSI BACK PRESSURE DRY 24,000 LB-IN DRY TORQUE FOR BRAKE RATING AND SPECIFICATION ONLY
RELEASE PRESSURE:	330 PSI INITIAL, 470 PSI FULL
MAXIMUM OPERATING PRESSURE:	3,000 PSI
MAXIMUM SPEED:	3,900 RPM.
LINING MATERIAL:	SINTERED BRONZE

INCH  
[MILLIMETER]

**COOLING OIL RECOMMENDATIONS**

<b>OIL TYPE:</b>	MINERAL BASE HYDRAULIC OIL SUCH AS MOBIL DTE 24. CITGO A/W 32 OR EQUIVALENT
<b>FLOW THRU CAPACITY:</b>	1.0 - 7.0 GPM
<b>MAXIMUM CASE PRESSURE:</b>	15 PSI
<b>SUMP OIL VOLUME:</b>	HORIZONTAL SHAFT: 3 FL. OZ. VERTICAL SHAFT: CONTACT FACTORY



**SECTION A-A**  
(2) PLACES



COMPONENT AND SYSTEM RECOMMENDATIONS MADE BY MICO, INC. ARE BASED ON INFORMATION SUPPLIED BY POTENTIAL USER AND/OR SYSTEM DESIGNER. THE POTENTIAL USER AND/OR DESIGNER MUST MAKE FINAL ACCEPTANCE AND APPROVAL OF COMPONENTS AND SYSTEM AFTER TESTING PERFORMANCE ON AN ACTUAL APPLICATION FOR WHICH SYSTEM WAS DESIGNED.	MICO, INC. CLAIMS PROPRIETARY RIGHTS TO THE MATERIAL DISCLOSED IN THIS DOCUMENT. THIS DOCUMENT IS PROVIDED IN CONFIDENCE AND MAY NOT BE REPRODUCED OR DISCLOSED WITHOUT WRITTEN PERMISSION FROM MICO, INC. COPYRIGHT MICO, INC., ALL RIGHTS RESERVED.	SCALE 0.500	TITLE MULTIPLE DISC BRAKE 3D-131524-EZ	DATE 2008-11-04	REV A
		DWN RGSB1	APRD PROD ENG06	SIZE D	DRAWING NUMBER 13-552-106
		X NO	APRD ENGR06	REV 08-2251	CUSTOMER COPY