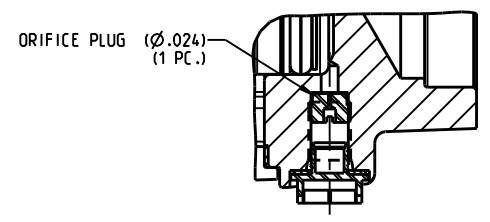


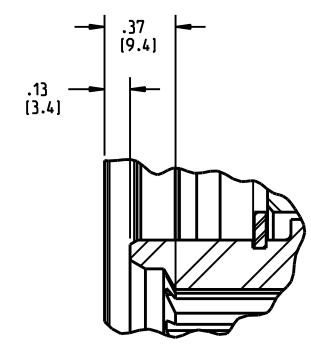
- NOTES:**
1. USE MINERAL BASE HYDRAULIC OIL ONLY FOR BRAKE RELEASE.
  2. DIMENSIONS MAY VARY BETWEEN UNITS AND ARE FOR REFERENCE PURPOSES ONLY. MILLIMETER VALUES MAY NOT BE AN EXACT CONVERSION OF INCH VALUES.
  3. REPAIR KIT P/N 12-501-421
  4. BRAKE SURFACE COATING: BLACK SEMI GLOSS ACRYLIC PRIMER.
  5. SURFACES  $\nabla$ 1,  $\nabla$ 2,  $\nabla$ 3,  $\nabla$ 4 &  $\nabla$ 5 AND ALSO PORTS TO BE FREE OF PAINT
  6. BEARING 32-470-028 TO BE SHIPPED AS A LOOSE PART ALONG WITH BRAKE ASSEMBLY 13-547-488
  7. TORQUE BOLTS TO 80-90 LBFT AFTER ASSEMBLY OF BRAKE ON VEHICLE

**SPECIFICATIONS:**

TYPE:	DRY MULTIPLE DISC BRAKE, SPRING APPLY, HYDRAULIC RELEASE.
TORQUE RATING:	5.250 LBIN STATIC (BREAKAWAY) AT 0 PSI BACK PRESSURE ACTUAL TORQUE MAY VARY BY UP TO 10% DUE TO MANUFACTURING TOLERANCES
RELEASE PRESSURE:	140 PSI INITIAL, 190 PSI FULL
MAXIMUM OPERATING PRESSURE:	3,000 PSI
MAXIMUM SPEED:	3,900 RPM
LINING MATERIAL:	SINTERED BRONZE
APPROXIMATE WEIGHT:	40 LB



SECTION C-C



DETAIL A  
SCALE 1.000

INCH  
(MILLIMETER)

<b>MICO</b> North Mankato, Minnesota USA				
SCALE 0.500	TITLE MULTIPLE DISC BRAKE			
DWN ETM 2013-10-10	APVD PROD ENGRG PJS 2013-11-07	SIZE B	DRAWING NUMBER 13-547-488	REV L
X NO X6715	APVD ENGRG BLF 2013-10-31	CUSTOMER COPY		2 2

COMPONENT AND SYSTEM RECOMMENDATIONS MADE BY MICO, INC ARE BASED ON INFORMATION SUPPLIED BY POTENTIAL USER AND/OR SYSTEM DESIGNER. THE POTENTIAL USER AND/OR DESIGNER MUST MAKE FINAL ACCEPTANCE AND APPROVAL OF COMPONENTS AND SYSTEM AFTER TESTING PERFORMANCE ON AN ACTUAL APPLICATION FOR WHICH SYSTEM WAS DESIGNED.

MICO, INC CLAIMS PROPRIETARY RIGHTS TO THE MATERIAL DISCLOSED IN THIS DOCUMENT. THIS DOCUMENT IS PROVIDED IN CONFIDENCE AND MAY NOT BE REPRODUCED OR DISCLOSED WITHOUT WRITTEN PERMISSION FROM MICO, INC. COPYRIGHT MICO, INC. ALL RIGHTS RESERVED.