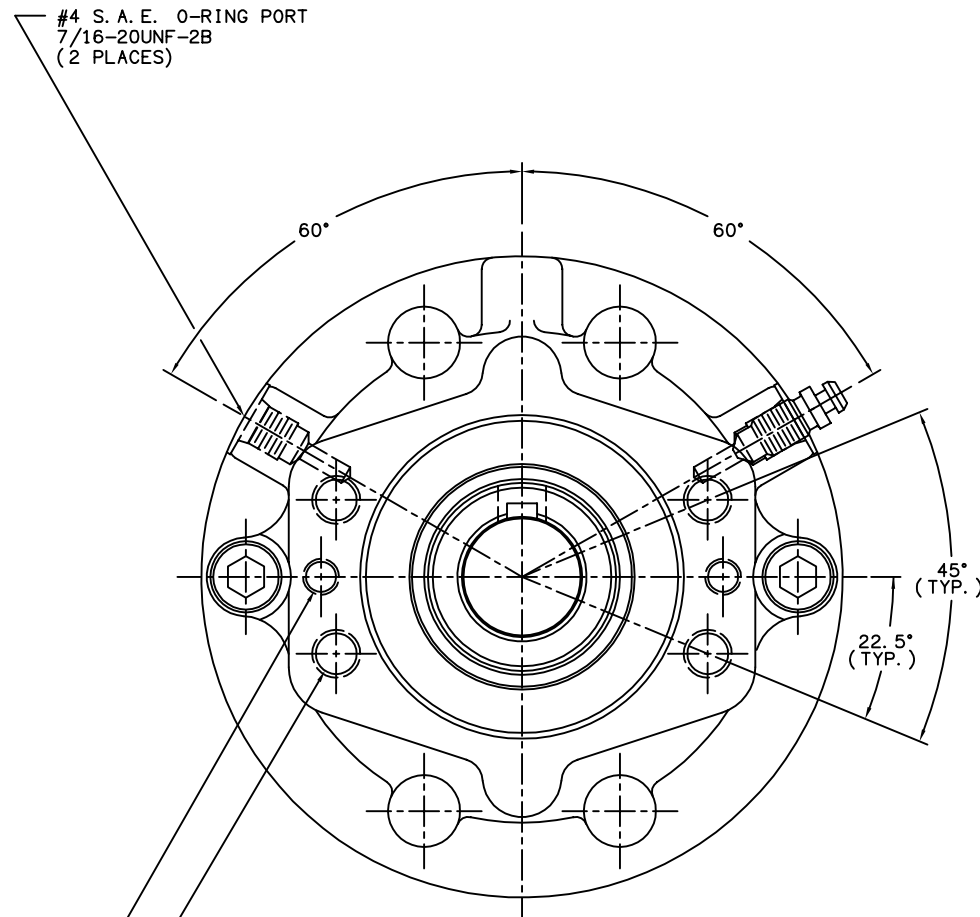
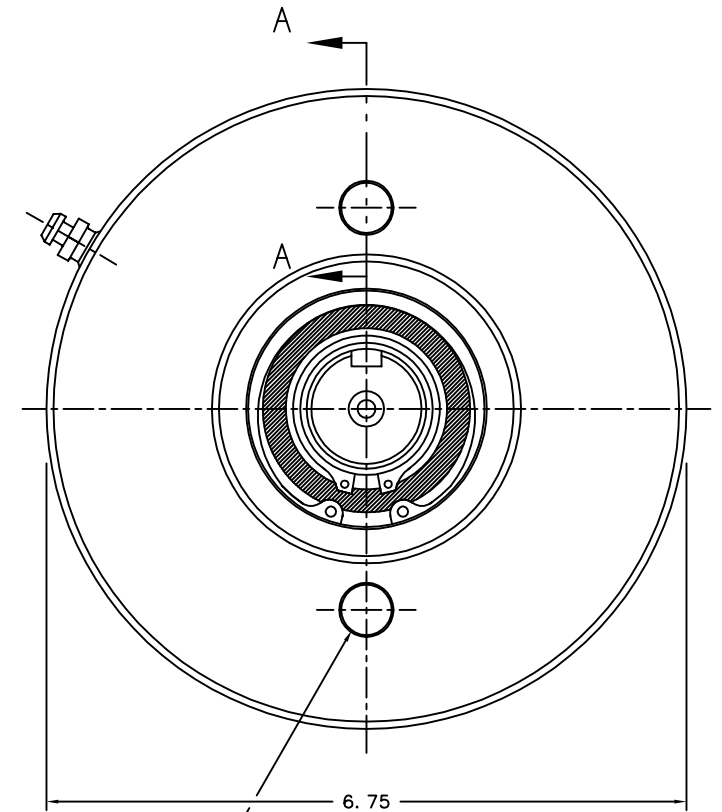
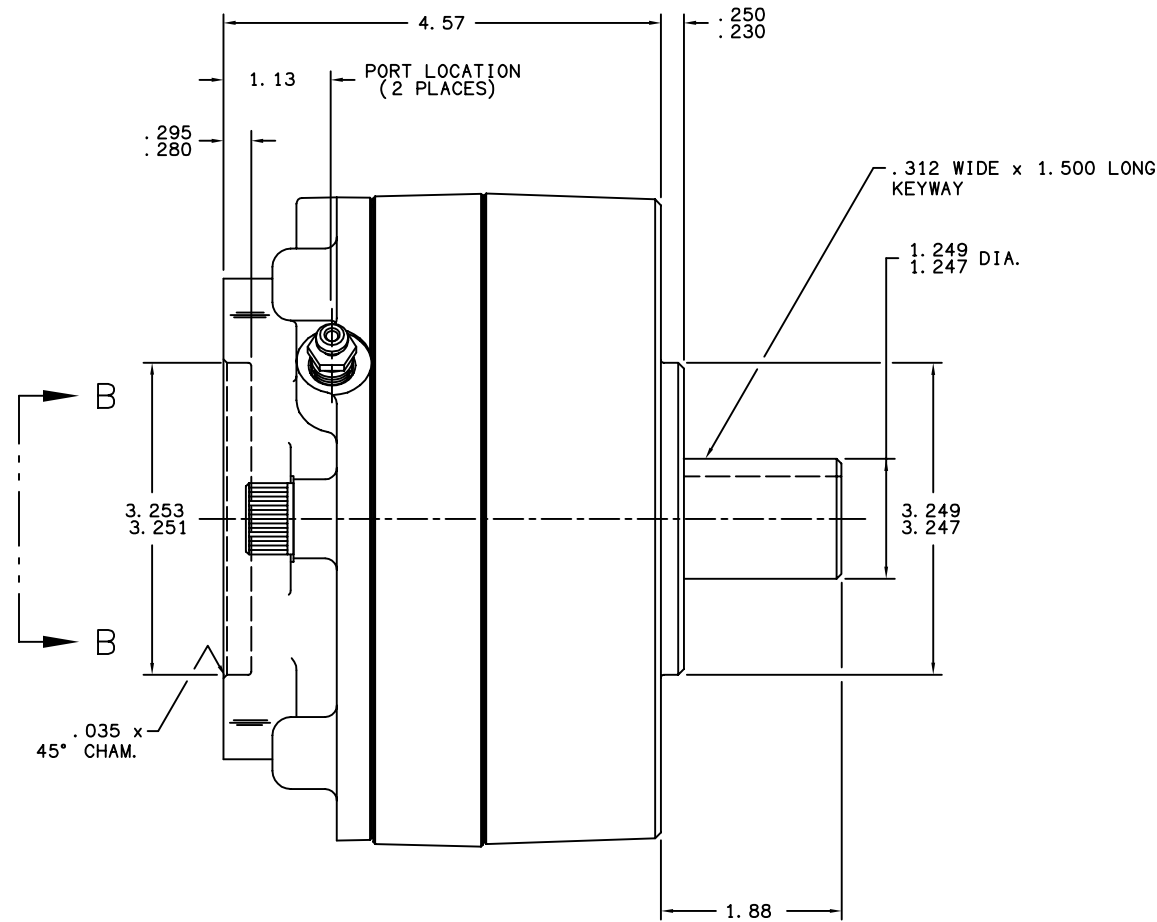


PART NUMBER
13-538-370
NPI OR ECN NO.
ECO S-1729



1/2-13UNC-2B x .625 MIN.
FULL THREAD
(4.188 DIA. B.C., REF.)
(4 PLACES)

3/8-16UNC-2B x .560 MIN. FULL THREAD
(4.188 DIA. B.C., REF.)
(2 PLACES)



.525 DIA. HOLE
(4.188 DIA. B.C.)
(2 PLACES)
(SEE SECTION B-B)

NOTES:

- 1) LINING REPAIR KIT P/N 12-501-245
- 2) BEARING REPAIR KIT P/N 12-501-241
- 3) O-RING REPAIR KIT P/N 12-501-246
- 4) SPRING REPAIR KIT P/N 12-501-244
- 5) REFER TO INSTALLATION SHEET #81-538-002 (SUPPLIED WITH BRAKE) FOR FURTHER MOUNTING INSTRUCTIONS.

SPECIFICATIONS:

TYPE: DRY MULTIPLE DISC BRAKE, SPRING APPLY, HYDRAULIC RELEASE

TORQUE RATING: 3,500 LB-IN STATIC (BREAKAWAY) AT 0 PSI BACK PRESSURE

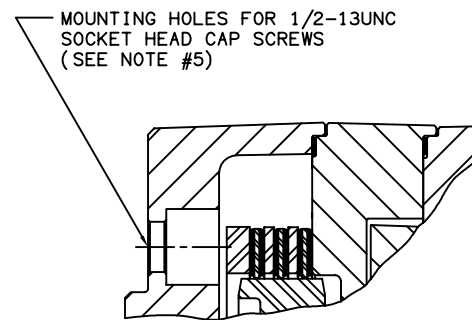
RELEASE PRESSURE: 170 PSI INITIAL, 200 PSI FULL

MAXIMUM OPERATING PRESSURE: 3,000 PSI

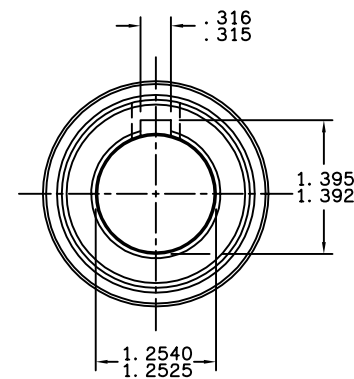
MAXIMUM SPEED: 3,900 RPM

APPROXIMATE WEIGHT: 27 LBS.

FOR USE WITH MINERAL BASE HYDRAULIC OIL ONLY



SECTION A-A



VIEW B-B



TITLE		MULTIPLE DISC BRAKE 3A-252535-M	
SCALE 1:2	CHECKED	PART NUMBER 13-538-370	REV B
DRN g. J. 4/21/98	APP ENG	CUSTOMER COPY	

COMPONENT AND SYSTEM RECOMMENDATIONS MADE BY MICO, INC. ARE BASED ON INFORMATION SUPPLIED BY POTENTIAL USER AND/OR SYSTEM DESIGNER. THE POTENTIAL USER AND/OR DESIGNER MUST MAKE FINAL ACCEPTANCE AND APPROVAL OF COMPONENTS AND SYSTEM AFTER TESTING PERFORMANCE ON AN ACTUAL APPLICATION FOR WHICH SYSTEM WAS DESIGNED.

MICO, INC. CLAIMS PROPRIETARY RIGHTS TO THE MATERIAL DISCLOSED IN THIS DOCUMENT. THIS DOCUMENT IS PROVIDED IN CONFIDENCE AND MAY NOT BE REPRODUCED OR DISCLOSED WITHOUT WRITTEN PERMISSION FROM MICO, INC. COPYRIGHT MICO, INC. ALL RIGHTS RESERVED.