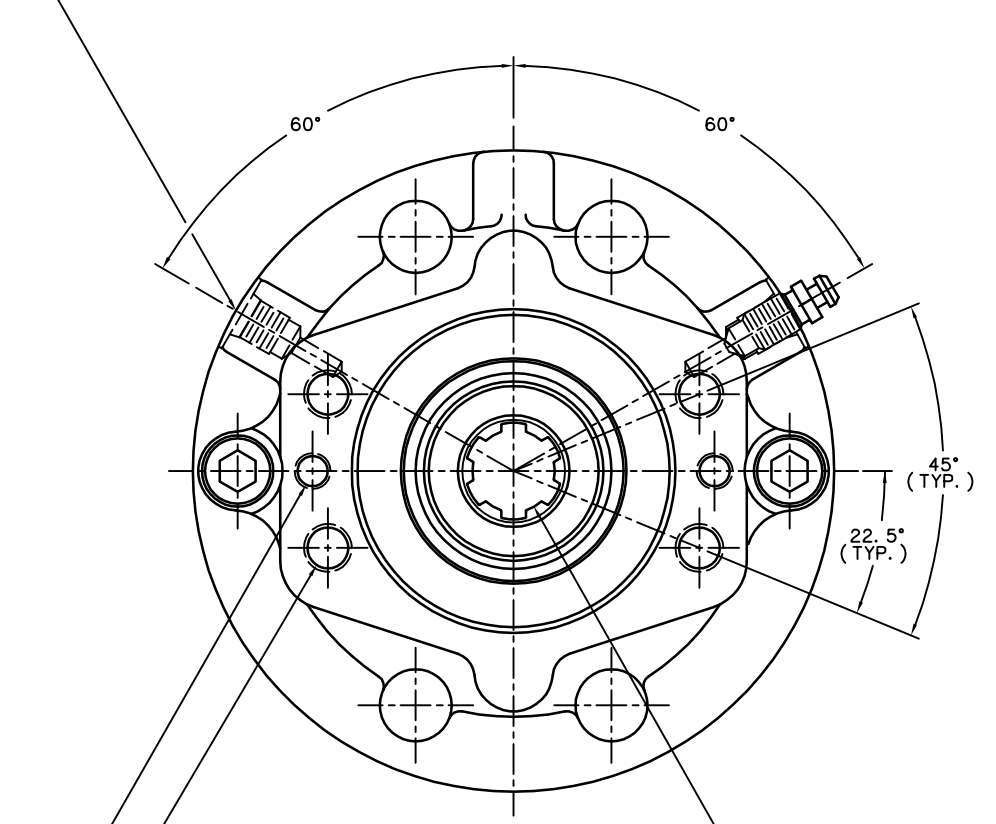


TITLE MULTIPLE DISC BRAKE		PART NUMBER 13-538-340
REV.	NPR OR ECO NO.	DATE
D	ECO S-1729	09/17/03

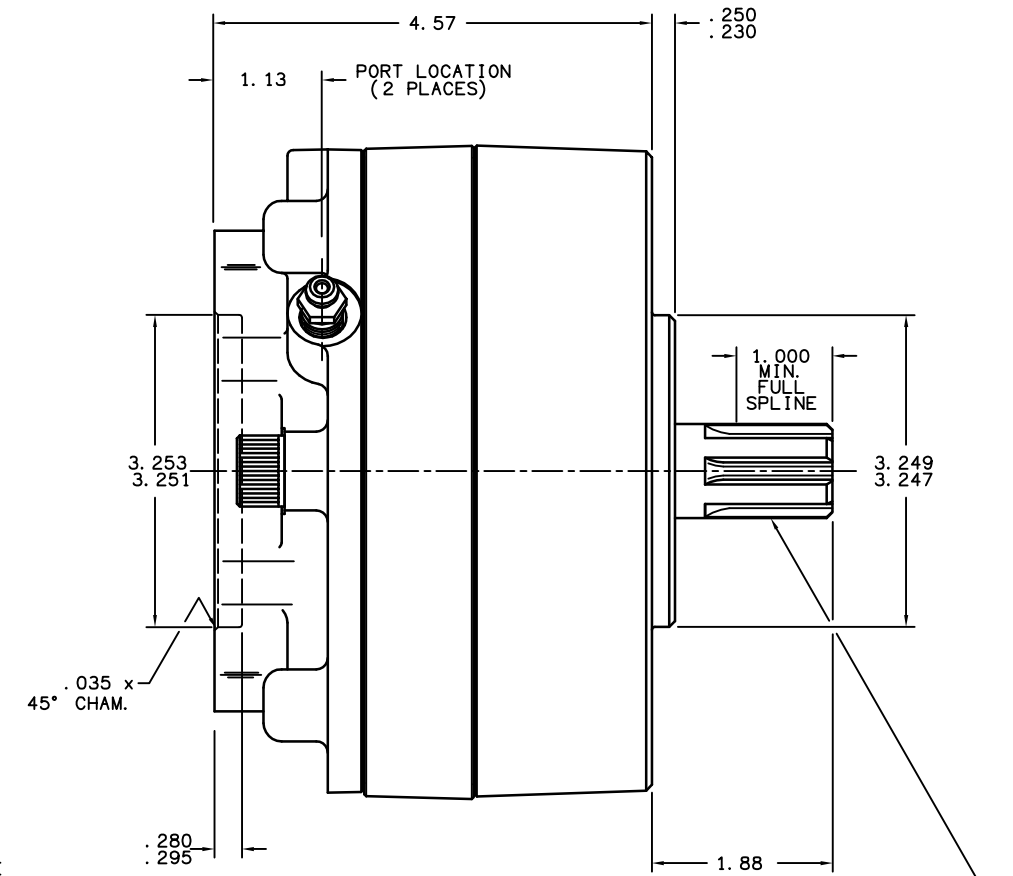
#4 S. A. E. O-RING PORT
7/16-20UNF-2B
(2 PLACES)



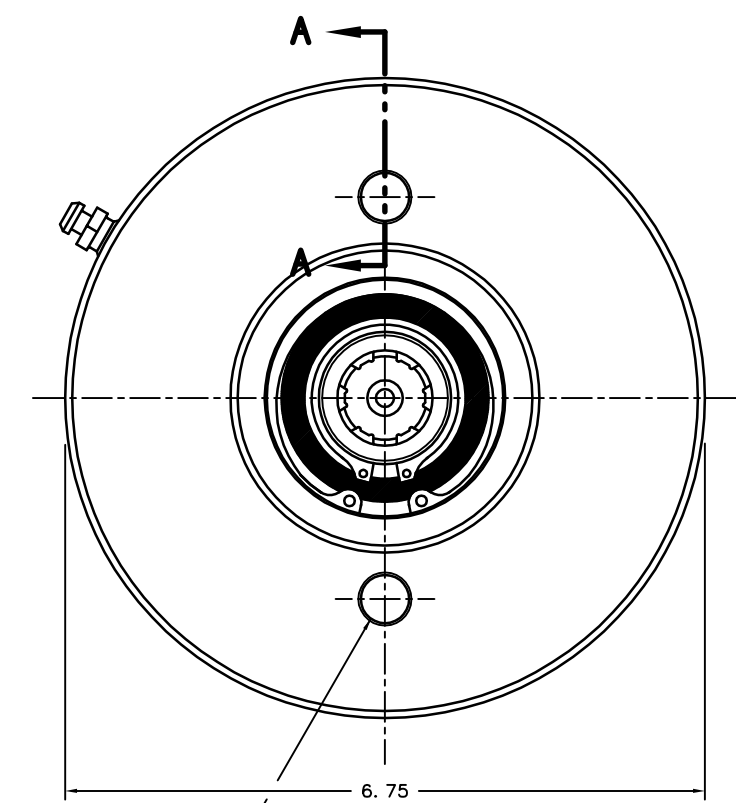
1/2-13UNC-2B x .625 MIN. FULL THREAD (4.188 DIA. B.C., REF.) (4 PLACES)

6B-1.000-INTERNAL PARALLEL SIDE SPLINE

3/8-16UNC-2B x .560 MIN. FULL THREAD (4.188 DIA. B.C., REF.) (2 PLACES)



6B-1.000-EXTERNAL PARALLEL SIDE SPLINE



.505/.502 DIA. HOLE (4.188 DIA. B.C.) (2 PLACES) (SEE SECTION B-B)

NOTES:

- 1) LINING REPAIR KIT P/N 12-501-245
- 2) BEARING REPAIR KIT P/N 12-501-241
- 3) O-RING REPAIR KIT P/N 12-501-246
- 4) SPRING REPAIR KIT P/N 12-501-244
- 5) REFER TO INSTALLATION SHEET #81-538-002 (SUPPLIED WITH BRAKE) FOR FURTHER MOUNTING INSTRUCTIONS.

SPECIFICATIONS:

TYPE: DRY MULTIPLE DISC BRAKE, SPRING APPLY, HYDRAULIC RELEASE

TORQUE RATING: 4,000 LB-IN STATIC (BREAKAWAY) AT 0 PSI BACK PRESSURE

RELEASE PRESSURE: 210 PSI INITIAL, 250 PSI FULL

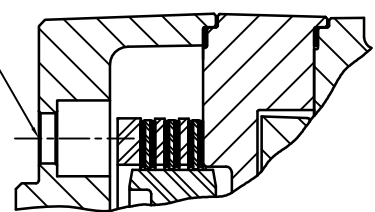
MAXIMUM OPERATING PRESSURE: 3,000 PSI

MAXIMUM SPEED: 3,900 RPM

APPROXIMATE WEIGHT: 27 LBS.

FOR USE WITH MINERAL BASE HYDRAULIC OIL ONLY.

MOUNTING HOLES FOR 1/2-13UNC SOCKET HEAD CAP SCREWS (SEE NOTE #5)



SECTION A-A

MICO, INC. CLAIMS PROPRIETARY RIGHTS TO THE MATERIAL DISCLOSED IN THIS DOCUMENT. THIS DOCUMENT IS PROVIDED IN CONFIDENCE AND MAY NOT BE REPRODUCED OR DISCLOSED WITHOUT WRITTEN PERMISSION FROM MICO, INC. COPYRIGHT MICO, INC. ALL RIGHTS RESERVED.

mico		North Mankato, Minnesota U.S.A.	
SCALE 1:2	PART NUMBER	REV.	
X NO.	13-538-340	D	
DRAWN G.J.	CUSTOMER COPY		
REVISIONS	DATE	CHECKED	APPROVED
	06/30/99	LH 09/19/03	ENG.GAA 09/19/03