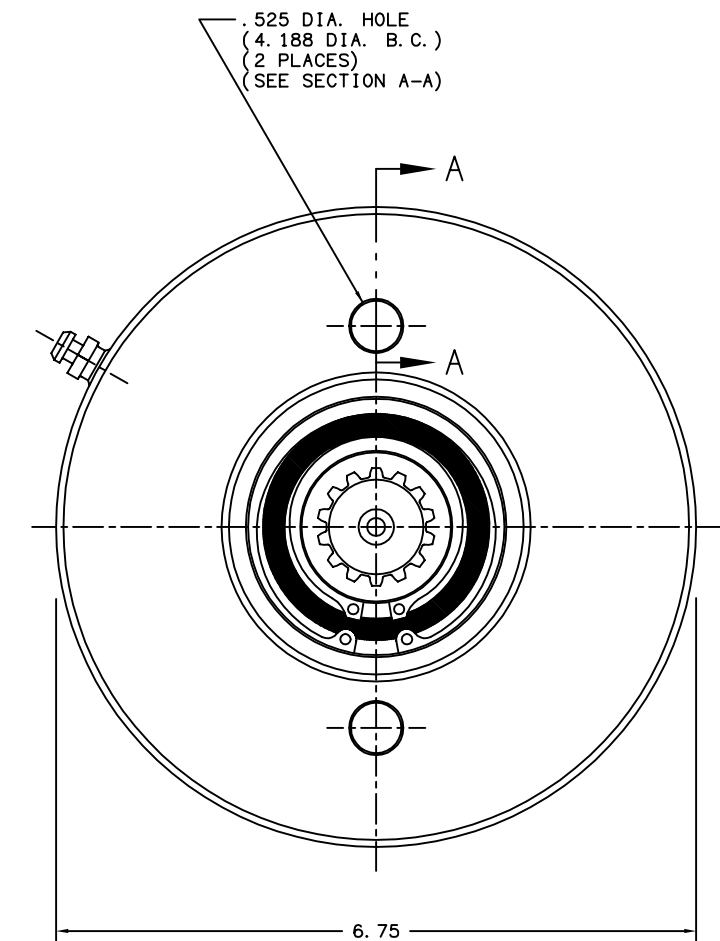
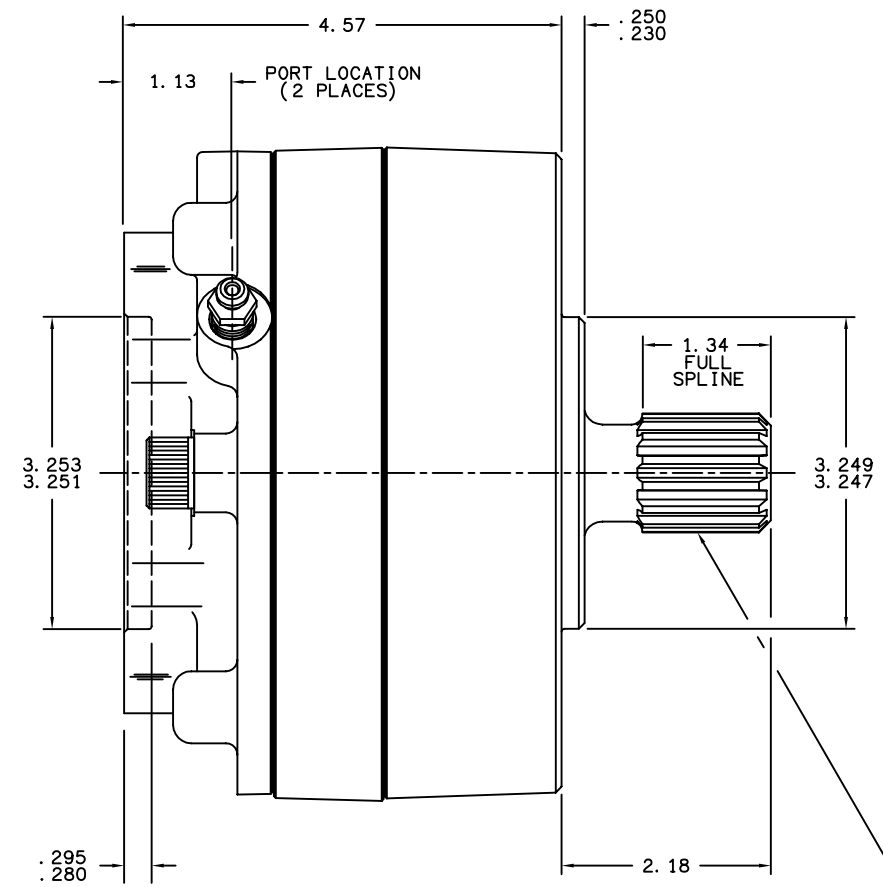
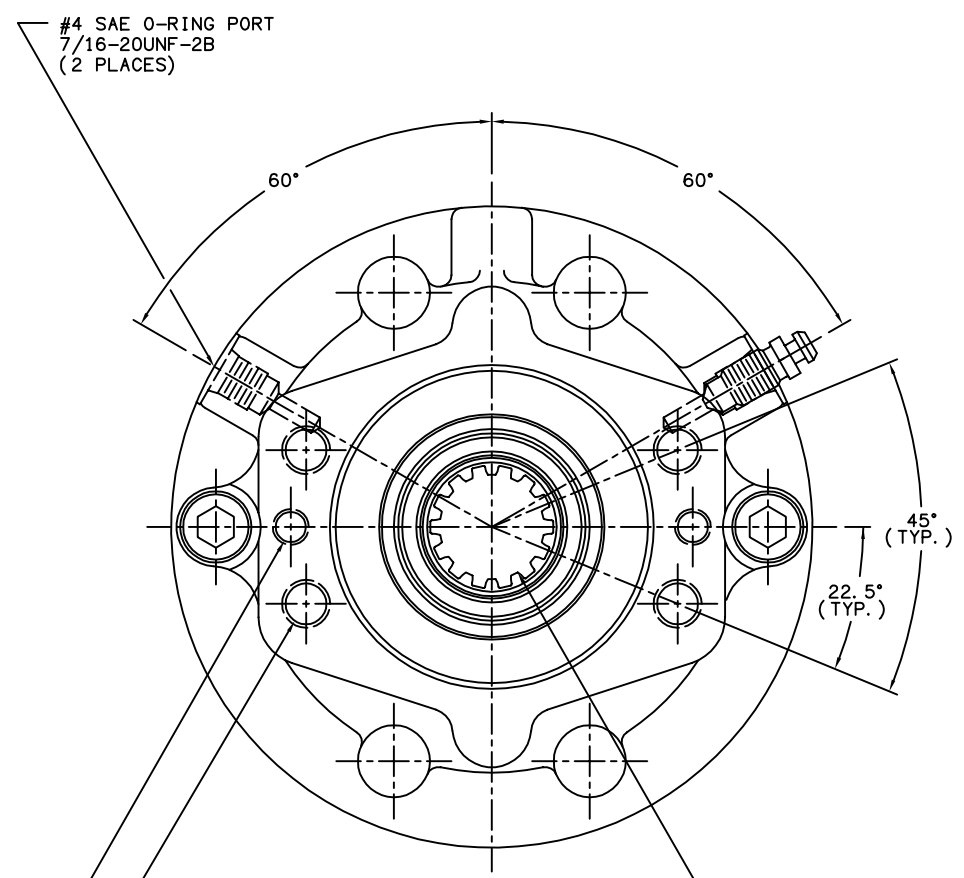


TITLE		MULTIPLE DISC BRAKE		PART NUMBER	
		3A-141448-M		13-538-300	
REV.	NPR OR ECO NO.	DATE			
E	ECO S-1729	05/27/03			



1/2-13UNC-2B x .625 MIN.
FULL THREAD
(4.188 DIA. B.C., REF.)
(4 PLACES)

3/8-16UNC-2B x .560 MIN. FULL THREAD
(4.188 DIA. B.C., REF.)
(2 PLACES)

30° INVOLUTE SPLINE-INTERNAL
14 TOOTH 12/24 PITCH
FLAT ROOT, SIDE FIT, CLASS 7
PER ANSI B92-1-1970

30° INVOLUTE SPLINE-EXTERNAL
14 TOOTH 12/24 PITCH
FLAT ROOT, SIDE FIT, CLASS 5
PER ANSI B92-1-1970

NOTES:

- 1) LINING REPAIR KIT P/N 12-501-243
- 2) BEARING REPAIR KIT P/N 12-501-242
- 3) O-RING REPAIR KIT P/N 12-501-246
- 4) SPRING REPAIR KIT P/N 12-501-244
- 5) REFER TO INSTALLATION SHEET #81-538-002 (SUPPLIED WITH BRAKE) FOR FURTHER MOUNTING INSTRUCTIONS.

SPECIFICATIONS:

TYPE: DRY MULTIPLE DISC BRAKE, SPRING APPLY, HYDRAULIC RELEASE

TORQUE RATING: 4,800 LB-IN STATIC (BREAKAWAY) AT 0 PSI BACK PRESSURE

RELEASE PRESSURE: 170 PSI INITIAL, 200 PSI FULL

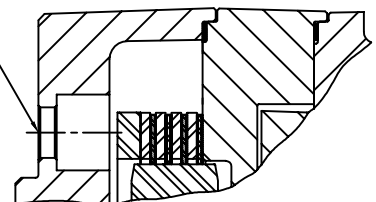
MAXIMUM OPERATING PRESSURE: 3,000 PSI

MAXIMUM SPEED: 3,900 RPM

APPROXIMATE WEIGHT: 27 LBS.

FOR USE WITH MINERAL BASE HYDRAULIC OIL ONLY

MOUNTING HOLES FOR 1/2-13UNC
SOCKET HEAD CAP SCREWS
(SEE NOTE #5)



SECTION A-A

MICO, INC. CLAIMS PROPRIETARY RIGHTS TO THE MATERIAL DISCLOSED IN THIS DOCUMENT. THIS DOCUMENT IS PROVIDED IN CONFIDENCE AND MAY NOT BE REPRODUCED OR DISCLOSED WITHOUT WRITTEN PERMISSION FROM MICO, INC. COPYRIGHT MICO, INC. ALL RIGHTS RESERVED.

mico		
North Mankato, Minnesota U.S.A.		
SCALE 1:2	PART NUMBER	REV.
X NO.	13-538-300	E
DRAWN G.J.	CUSTOMER COPY	
REVISED LH	CHECKED	APPROVED
DATE 1-8-98		ENG.