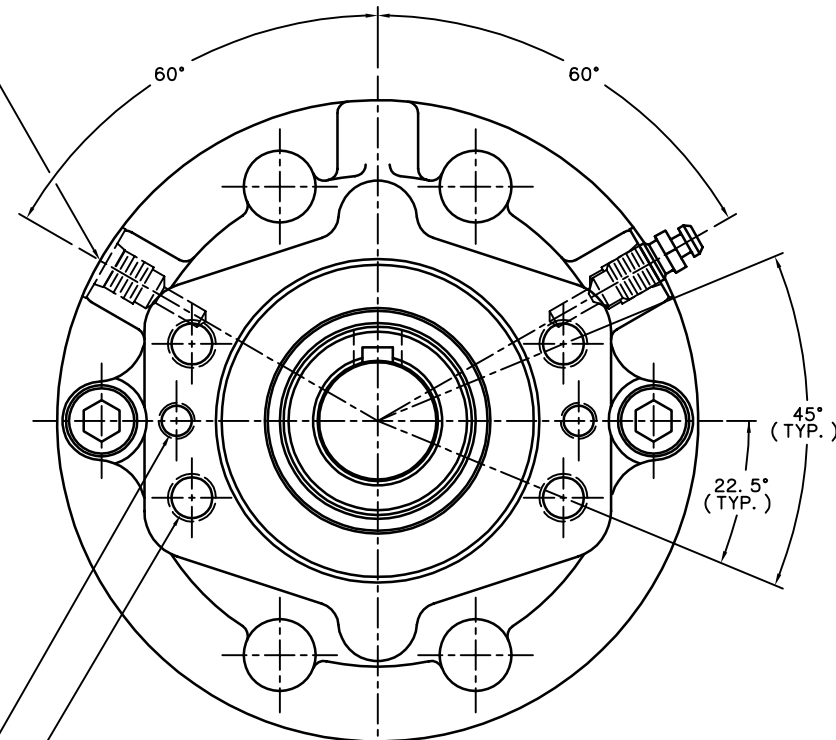


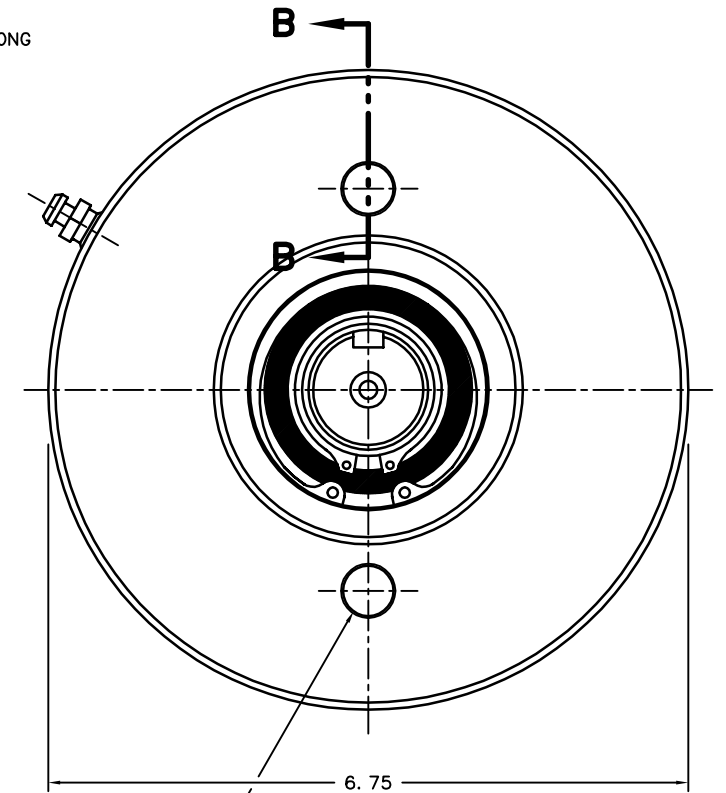
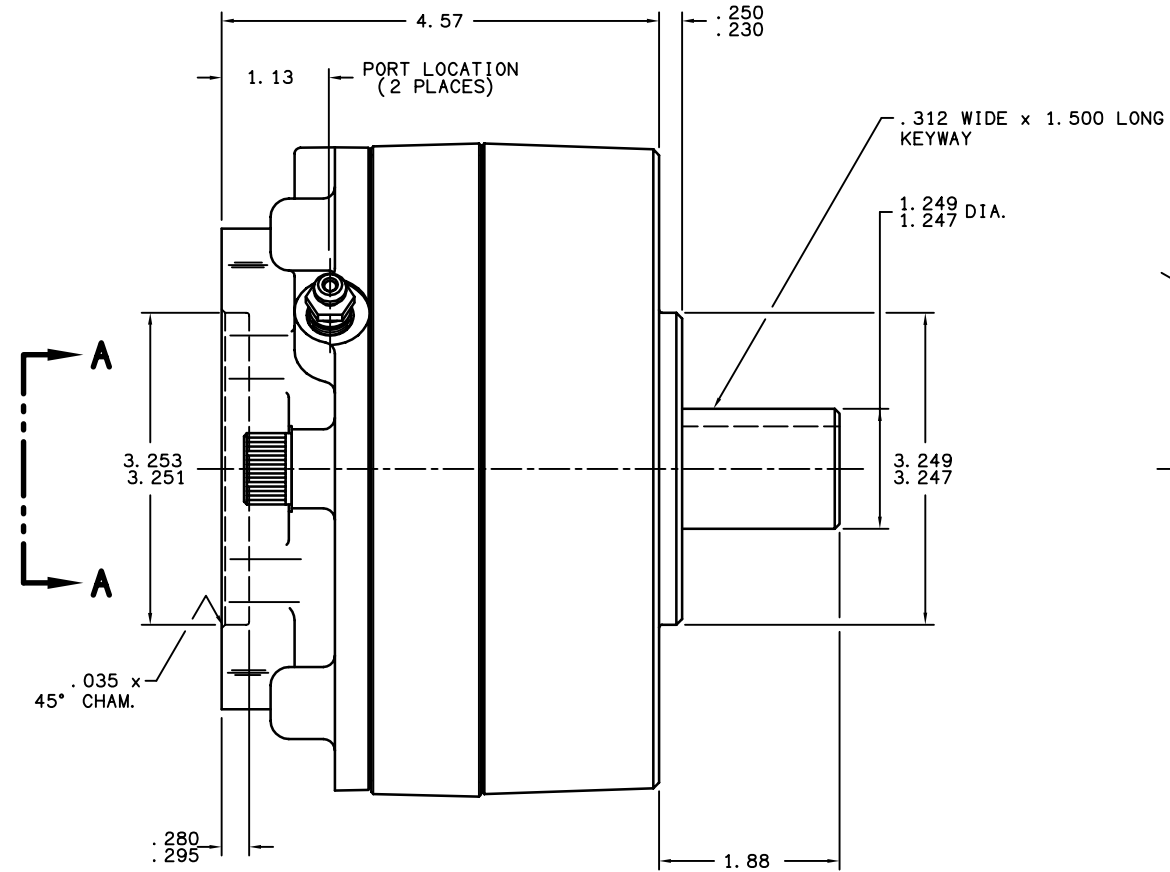
PART NUMBER
13-538-272
NPI OR ECN NO.
ECO S-1729

#4 S. A. E. O-RING PORT
7/16-20UNF-2B
(2 PLACES)



1/2-13UNC-2B x .625 MIN.
FULL THREAD
(4.188 DIA. B.C., REF.)
(4 PLACES)

3/8-16UNC-2B x .560 MIN. FULL THREAD
(4.188 DIA. B.C., REF.)
(2 PLACES)



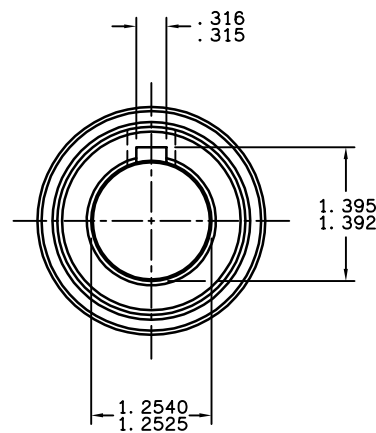
.525 DIA. HOLE
(4.188 DIA. B.C.)
(2 PLACES)
(SEE SECTION B-B)

NOTES:

- 1) LINING REPAIR KIT P/N 12-501-243
- 2) BEARING REPAIR KIT P/N 12-501-241
- 3) O-RING REPAIR KIT P/N 12-501-246
- 4) SPRING REPAIR KIT P/N 12-501-244
- 5) REFER TO INSTALLATION SHEET #81-538-002 (SUPPLIED WITH BRAKE) FOR FURTHER MOUNTING INSTRUCTIONS.

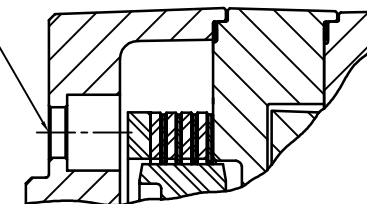
SPECIFICATIONS:

TYPE: DRY MULTIPLE DISC BRAKE, SPRING APPLY, HYDRAULIC RELEASE
TORQUE RATING: 4,800 LB-IN STATIC (BREAKAWAY) AT 0 PSI BACK PRESSURE
RELEASE PRESSURE: 170 PSI INITIAL, 200 PSI FULL
MAXIMUM OPERATING PRESSURE: 3,000 PSI
MAXIMUM SPEED: 3,900 RPM
APPROXIMATE WEIGHT: 27 LBS.
 FOR USE WITH MINERAL BASE HYDRAULIC OIL ONLY



VIEW A-A

MOUNTING HOLES FOR 1/2-13UNC
SOCKET HEAD CAP SCREWS
(SEE NOTE #5)



SECTION B-B

COMPONENT AND SYSTEM RECOMMENDATIONS MADE BY MICO, INC. ARE BASED ON INFORMATION SUPPLIED BY POTENTIAL USER AND/OR SYSTEM DESIGNER. THE POTENTIAL USER AND/OR DESIGNER MUST MAKE FINAL ACCEPTANCE AND APPROVAL OF COMPONENTS AND SYSTEM AFTER TESTING PERFORMANCE ON AN ACTUAL APPLICATION FOR WHICH SYSTEM WAS DESIGNED.

MICO, INC. CLAIMS PROPRIETARY RIGHTS TO THE MATERIAL DISCLOSED IN THIS DOCUMENT. THIS DOCUMENT IS PROVIDED IN CONFIDENCE AND MAY NOT BE REPRODUCED OR DISCLOSED WITHOUT WRITTEN PERMISSION FROM MICO, INC. COPYRIGHT MICO, INC. ALL RIGHTS RESERVED.



| | | | |
|---------------------|---------|------------------------------------|----------|
| TITLE | | MULTIPLE DISC BRAKE 3A-252548-M | |
| SCALE 1:1 | CHECKED | PART NUMBER 13-538-272 | REV E |
| DRN ETM 07/15/99 | APP ENG | CUSTOMER COPY | |