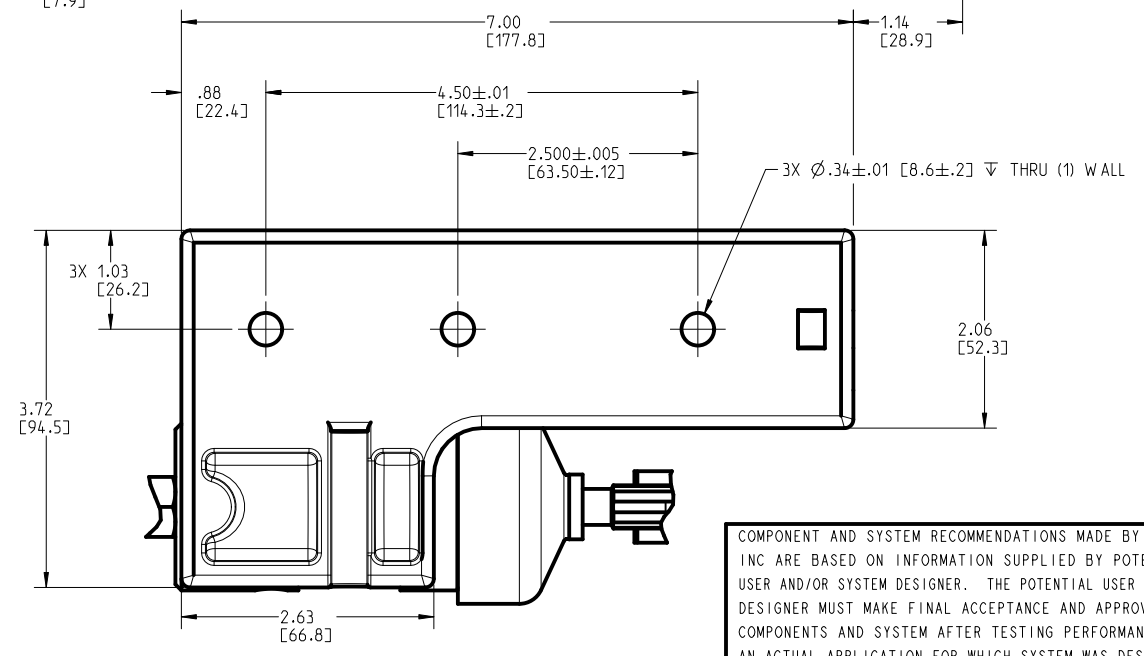


**NOTES:**

- TO BE USED WITH MINERAL BASE HYDRAULIC OIL ONLY.
- DIMENSIONS WITHOUT TOLERANCE MAY VARY BETWEEN UNITS AND ARE TO BE USED FOR REFERENCE PURPOSES ONLY. MILLIMETER VALUES MAY NOT BE AN EXACT CONVERSION OF INCH VALUES.
- PEDAL ACTUATOR P/N 12-460-186.  
ACTUATOR ONLY P/N 12-460-188  
BORE:  $\varnothing 1.250$  IN  
DISPLACEMENT: .73 CUIN  
REPAIR KIT P/N 12-400-002  
MAXIMUM OPERATING PRESSURE 425 PSI AT 85 LB PEDAL EFFORT.  
PEDAL EFFORT NOT TO EXCEED 85 LB AT TOP OF PEDAL.
- SLAVE CYLINDER P/N 12-120-016  
BORE:  $\varnothing .625$  IN  
STROKE: 2.06 IN  
DISPLACEMENT: .63 CUIN  
REPAIR KIT P/N 12-100-014
- RESERVOIR P/N 20-920-006  
CAPACITY: 3.30 CUIN
- SYSTEM REPAIR KIT P/N 12-400-024



INCH  
(MILLIMETER)



COMPONENT AND SYSTEM RECOMMENDATIONS MADE BY MICO, INC ARE BASED ON INFORMATION SUPPLIED BY POTENTIAL USER AND/OR SYSTEM DESIGNER. THE POTENTIAL USER AND/OR DESIGNER MUST MAKE FINAL ACCEPTANCE AND APPROVAL OF COMPONENTS AND SYSTEM AFTER TESTING PERFORMANCE ON AN ACTUAL APPLICATION FOR WHICH SYSTEM WAS DESIGNED.

MICO, INC CLAIMS PROPRIETARY RIGHTS TO THE MATERIAL DISCLOSED IN THIS DOCUMENT. THIS DOCUMENT IS PROVIDED IN CONFIDENCE AND MAY NOT BE REPRODUCED OR DISCLOSED WITHOUT WRITTEN PERMISSION FROM MICO, INC. COPYRIGHT MICO, INC. ALL RIGHTS RESERVED.

SCALE	0.500	TITLE	THROTTLE CONTROL		
DWN ETM	2016-01-21	APVD PROD ENGRG	PJS 2016-03-14	SIZE	B
X NO	APVD ENGRG	BSW 2016-02-19	DRAWING NUMBER	12-460-190	REV
			CUSTOMER COPY	H	2 2