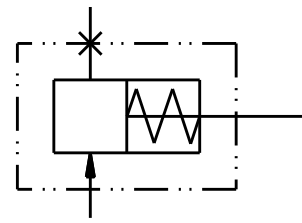


**NOTES:**

1. TO BE USED WITH MINERAL BASE HYDRAULIC OIL ONLY.
2. DIMENSIONS MAY VARY BETWEEN UNITS AND ARE TO BE USED FOR REFERENCE PURPOSES ONLY.
3. MAXIMUM WORKING PRESSURE: 1500 PSI
4. STROKE: 2.44 IN
5. BORE:  $\varnothing .625$  IN
6. AREA:  $.3068$  SQIN
7. DISCPLACMENT:  $.729$  CUIN
8. REPAIR KIT P/N 12-100-010



COMPONENT AND SYSTEM RECOMMENDATIONS MADE BY MICO, INC ARE BASED ON INFORMATION SUPPLIED BY POTENTIAL USER AND/OR SYSTEM DESIGNER. THE POTENTIAL USER AND/OR DESIGNER MUST MAKE FINAL ACCEPTANCE AND APPROVAL OF COMPONENTS AND SYSTEM AFTER TESTING PERFORMANCE ON AN ACTUAL APPLICATION FOR WHICH SYSTEM WAS DESIGNED.

MICO, INC CLAIMS PROPRIETARY RIGHTS TO THE MATERIAL DISCLOSED IN THIS DOCUMENT. THIS DOCUMENT IS PROVIDED IN CONFIDENCE AND MAY NOT BE REPRODUCED OR DISCLOSED WITHOUT WRITTEN PERMISSION FROM MICO, INC. COPYRIGHT MICO, INC. ALL RIGHTS RESERVED.

|            |                 |      |                |     |
|------------|-----------------|------|----------------|-----|
| SCALE      | TITLE           |      |                |     |
| 1.000      | SLAVE CYLINDER  |      |                |     |
| DWN MAP    | APVD PROD ENGRG | SIZE | DRAWING NUMBER | REV |
| 2010-05-03 | PJS 2010-05-17  | B    | 12-120-010     | G   |
| X NO       | APVD ENGRG      |      | CUSTOMER COPY  | ' 1 |
| .          | BSW 2010-05-14  |      |                |     |