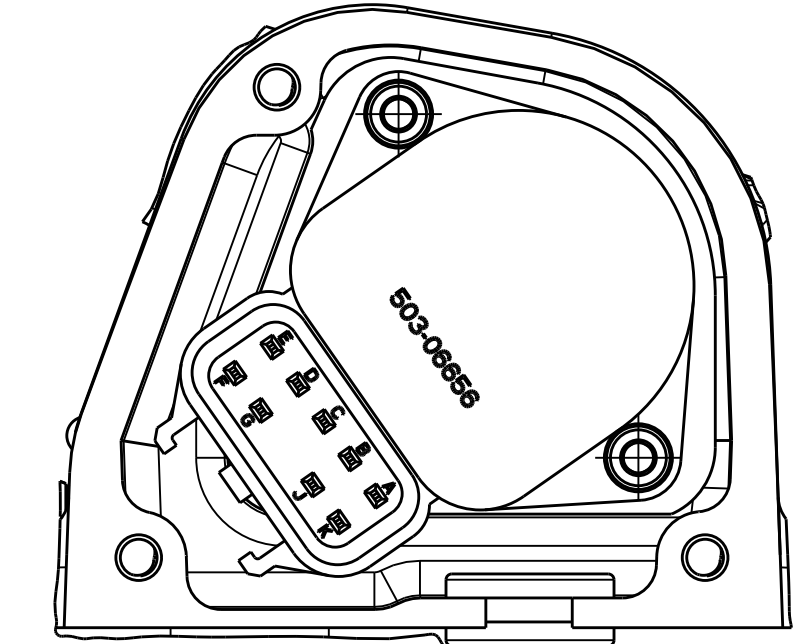


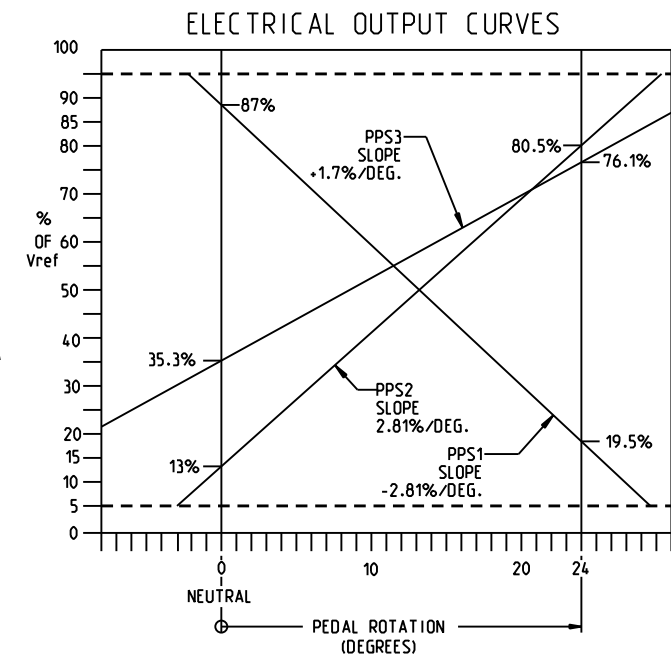
**VIEW A-A**  
SCALE 0.375



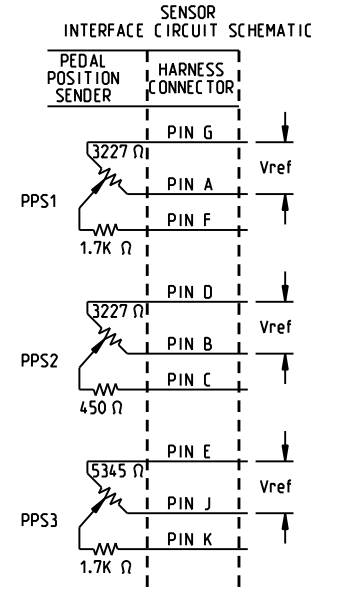
**SECTION C-C**  
SCALE 1.000

**NOTES:**

- DIMENSIONS MAY VARY BETWEEN UNITS AND ARE FOR REFERENCE PURPOSES ONLY. MILLIMETER VALUES MAY NOT BE AN EXACT CONVERSION OF INCH VALUES.
- MATING CONNECTOR: PACKARD P/N 12065425 (10-WAY 2X5 150 SERIES METRI-PACK) SENSOR CONNECTOR HAS TIN PLATED PINS.
- MAXIMUM CURRENT DRAW: 5.0 mA EACH CIRCUIT OR 0.08 WATT MAXIMUM.
- OVERALL RESISTANCE AND SERIES WIPER RESISTANCE TOLERANCE: ±30%.
- REPAIR KIT NOT REQUIRED.
- WEIGHT: 5.4 LB (2.4 KG)
- SURFACE FINISH: PEDAL AND BASE ARE BLACK ANODIZED ALUMINUM.
- POSITION SENSOR OUTPUT CONFORMS TO SAE J1843.



CURVES SHOWN FOR PIN G.  
PIN D AND PIN E HIGH.  
REVERSING Vref REVERSES  
THE CURVE FOR THAT POT.



**ELECTRICAL SCHEMATIC**

**INCH**  
**(MILLIMETER)**

COMPONENT AND SYSTEM RECOMMENDATIONS MADE BY MICO, INC ARE BASED ON INFORMATION SUPPLIED BY POTENTIAL USER AND/OR SYSTEM DESIGNER. THE POTENTIAL USER AND/OR DESIGNER MUST MAKE FINAL ACCEPTANCE AND APPROVAL OF COMPONENTS AND SYSTEM AFTER TESTING PERFORMANCE ON AN ACTUAL APPLICATION FOR WHICH SYSTEM WAS DESIGNED.		MICO, INC CLAIMS PROPRIETARY RIGHTS TO THE MATERIAL DISCLOSED IN THIS DOCUMENT. THIS DOCUMENT IS PROVIDED IN CONFIDENCE AND MAY NOT BE REPRODUCED OR DISCLOSED WITHOUT WRITTEN PERMISSION FROM MICO, INC. COPYRIGHT MICO, INC. ALL RIGHTS RESERVED.	
SCALE 0.500	TITLE EPT-S57-RP-BM000-011		
DWN JRA 2011-06-29	APVD PROD ENGRG AB 18-NOV-2011	SIZE B	DRAWING NUMBER 07-910-030
X NO X06-1269-100	APVD ENGRG STR 2011-11-16	REV C	CUSTOMER COPY

