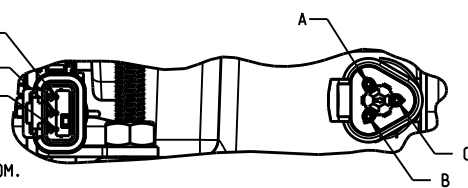


SWITCH CONNECTIONS
DEUTSCH DTMO4-3P
GOLD PLATED PINS

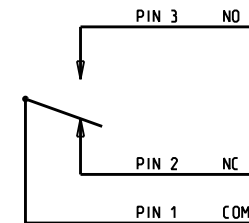
PIN 3 = NO
PIN 2 = NC
PIN 1 = COMMON

SWITCH CHANGES STATE WHEN
PEDAL REACHES 16% OUTPUT NOM.
SWITCH WILL RESET BEFORE
OUTPUT RETURNS TO 22%.



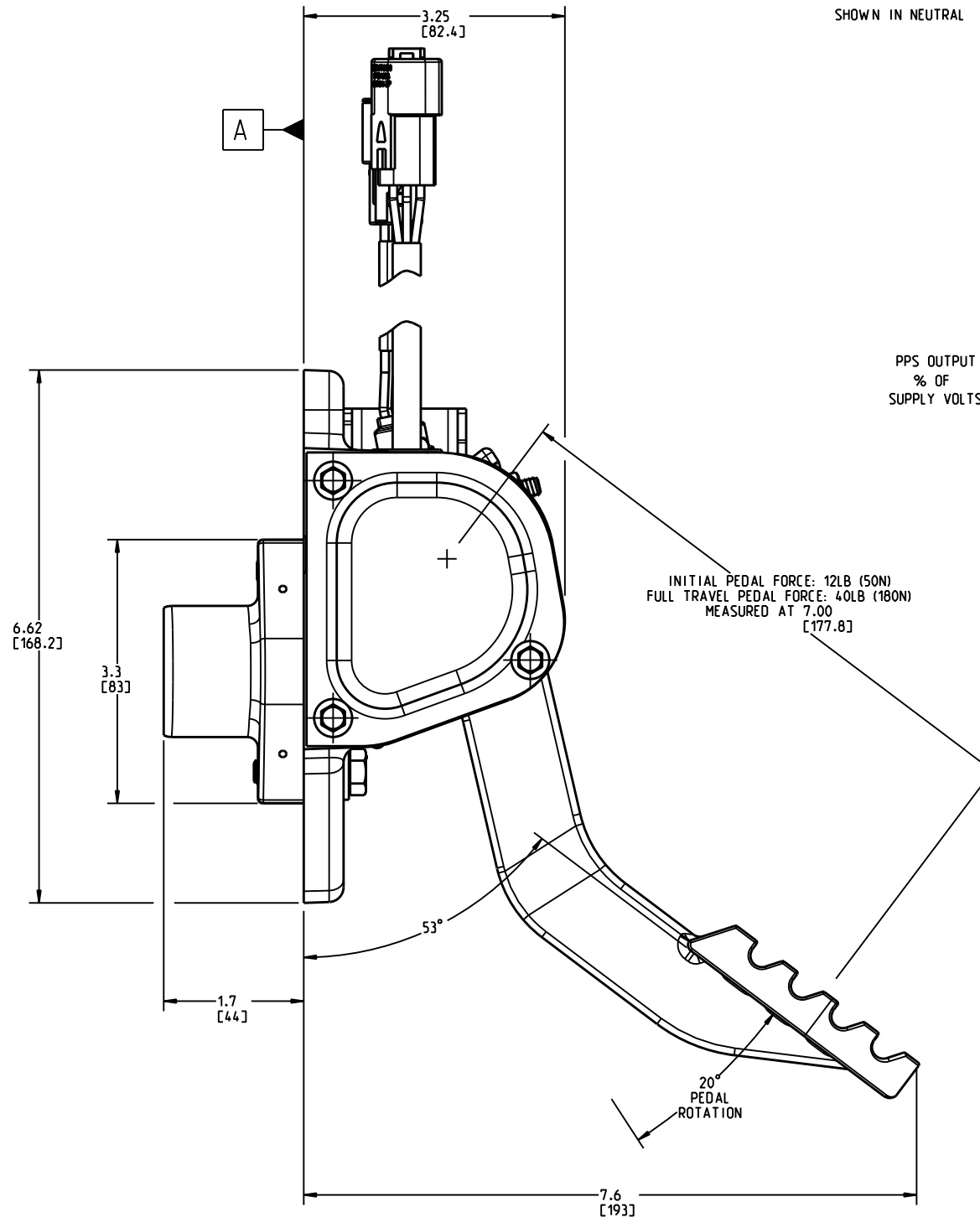
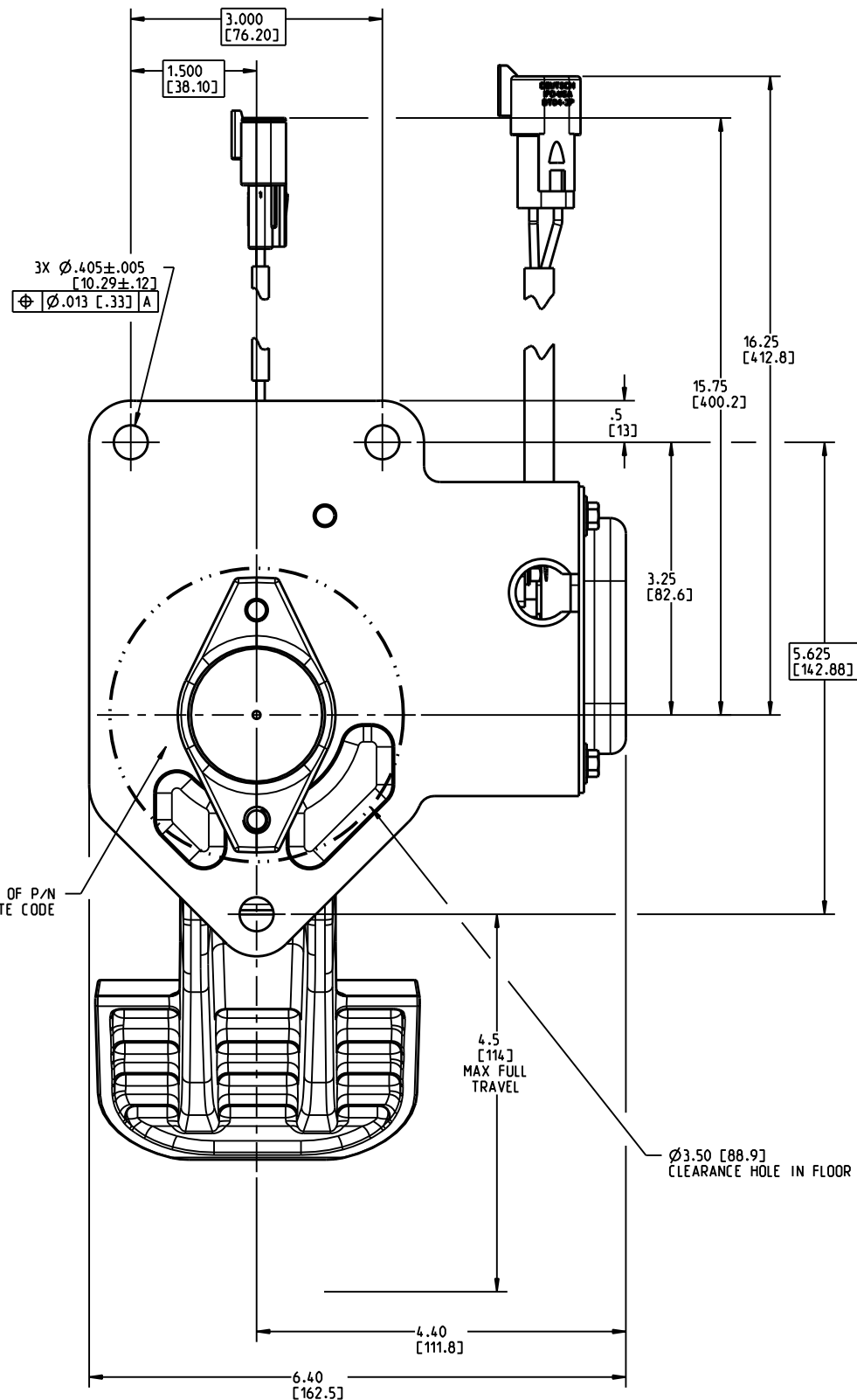
DEUTSCH DT04-3P
PPS CONNECTIONS

PIN C = GROUND
PIN B = SUPPLY VOLTAGE
PIN A = PPS OUTPUT

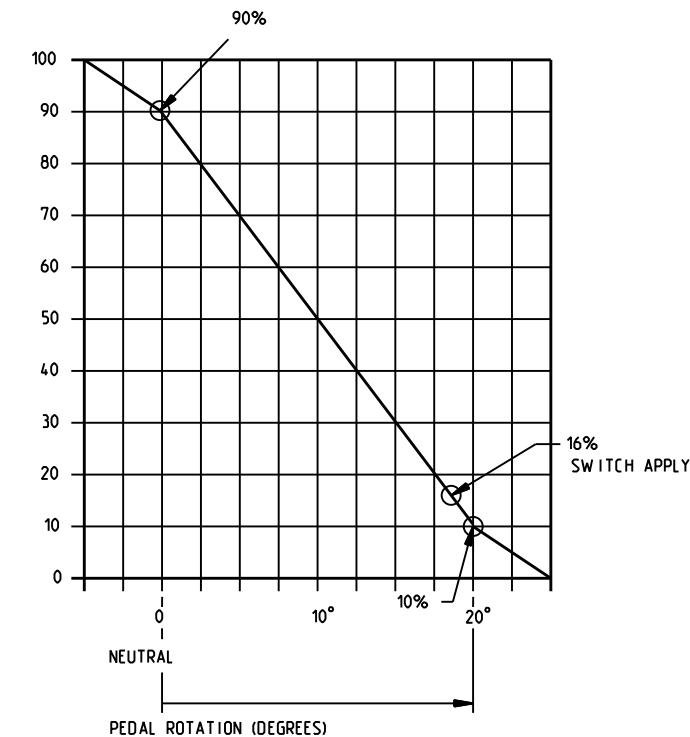


SHOWN IN NEUTRAL

DRAWING NUMBER
07-910-011
NPI OR ECN NO
ECN G000151



ELECTRICAL OUTPUT CURVE



NOTES:

- 1) DIMENSIONS MAY VARY BETWEEN UNITS AND ARE FOR REFERENCE PURPOSES ONLY. MILLIMETER VALUES MAY NOT BE AN EXACT CONVERSION OF INCH VALUES.
- 2) SINGLE OUTPUT SEALED HALL EFFECT POSITION SENSOR.
- 3) SUPPLY VOLTAGE TO BE 5±0.5V.
- 4) SENSOR DRAWS 10 mA MAX PLUS 2 mA MAX OUTPUT.
- 5) MODEL CODE EPB-S53-LK-RD040-010.
- 6) MICROSWITCH IS A OMRON D2VW-5L1A-1MS SPDT IP67 3 A LAMP LOAD, 5 A RESISTIVE LOAD AT 30 VDC.
- 7) SERVICE KIT NOT REQUIRED.
- 8) WEIGHT: 5.5 LB (2.5 KG)
- 9) SURFACE FINISH: PEDAL & BASE ARE BLACK ANODIZED ALUMINUM.

MICO
North Mankato, Minnesota USA

SCALE 0.500	TITLE EPB-S53-LK-RD040-11		
DWN JRA 2013-01-09	APVD PROD ENGRG	SIZE B	DRAWING NUMBER 07-910-011
X NO X7702-05	APVD ENGRG STR 2013-01-25		REV F
			CUSTOMER COPY

**INCH
[MILLIMETER]**

COMPONENT AND SYSTEM RECOMMENDATIONS MADE BY MICO, INC ARE BASED ON INFORMATION SUPPLIED BY POTENTIAL USER AND/OR SYSTEM DESIGNER. THE POTENTIAL USER AND/OR DESIGNER MUST MAKE FINAL ACCEPTANCE AND APPROVAL OF COMPONENTS AND SYSTEM AFTER TESTING PERFORMANCE ON AN ACTUAL APPLICATION FOR WHICH SYSTEM WAS DESIGNED.

MICO, INC CLAIMS PROPRIETARY RIGHTS TO THE MATERIAL DISCLOSED IN THIS DOCUMENT. THIS DOCUMENT IS PROVIDED IN CONFIDENCE AND MAY NOT BE REPRODUCED OR DISCLOSED WITHOUT WRITTEN PERMISSION FROM MICO, INC. COPYRIGHT MICO, INC. ALL RIGHTS RESERVED.