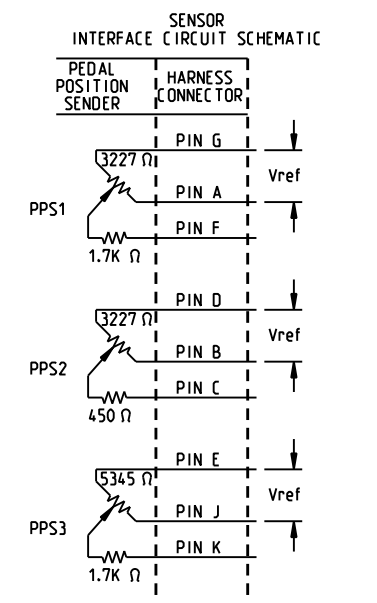
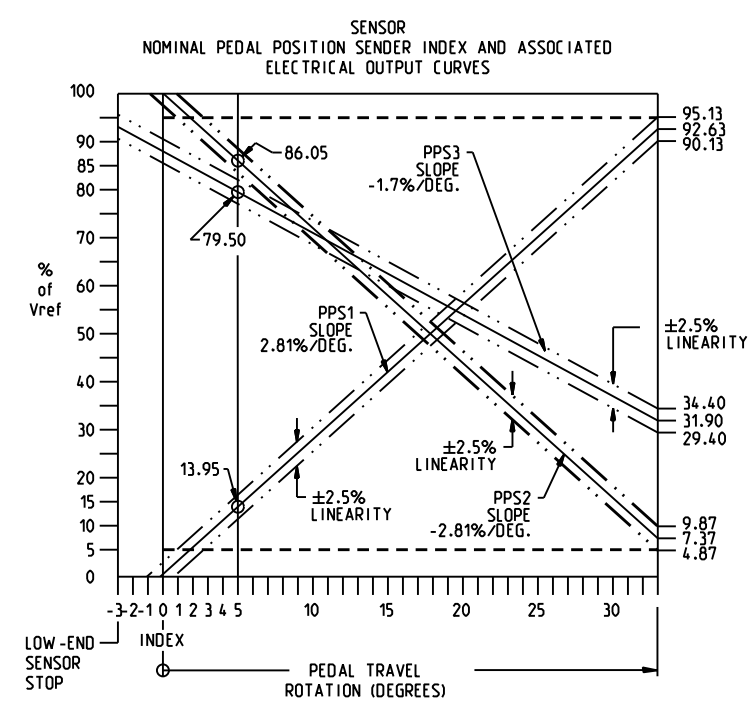
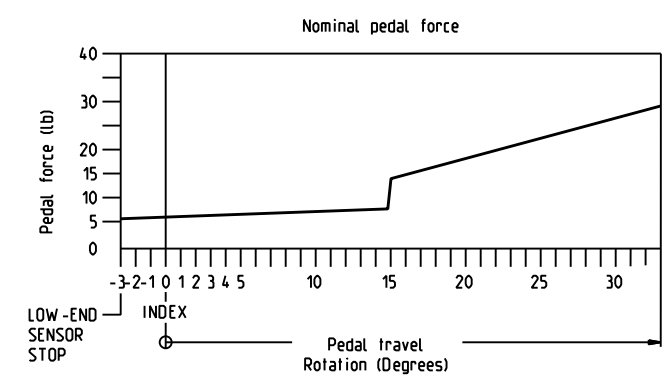


VIEW A-A
SCALE: 0.375



NOTES:

- 1) DIMENSIONS MAY VARY BETWEEN UNITS AND ARE FOR REFERENCE PURPOSES ONLY. MILLIMETER VALUES MAY NOT BE AN EXACT CONVERSION OF INCH VALUES.
- 2) NOMINAL SUPPLY VOLTAGE TO BE 5 V.
- 3) MATING CONNECTOR: PACKARD P/N 12065425 (10-WAY 2X5 150 SERIES METRI-PACK)
- 4) MAXIMUM CURRENT DRAW: 5.0 mA EACH CIRCUIT OR .125 WATT MAXIMUM.
- 5) RECOMMENDED LOAD RESISTANCE ≥ 200 kΩ.
- 6) OVERALL RESISTANCE AND SERIES RESISTANCE TOLERANCE: ±30%
- 7) REPAIR KIT NOT REQUIRED.

INCH
(MILLIMETER)

COMPONENT AND SYSTEM RECOMMENDATIONS MADE BY MICO, INC ARE BASED ON INFORMATION SUPPLIED BY POTENTIAL USER AND/OR SYSTEM DESIGNER. THE POTENTIAL USER AND/OR DESIGNER MUST MAKE FINAL ACCEPTANCE AND APPROVAL OF COMPONENTS AND SYSTEM AFTER TESTING PERFORMANCE ON AN ACTUAL APPLICATION FOR WHICH SYSTEM WAS DESIGNED.

MICO, INC CLAIMS PROPRIETARY RIGHTS TO THE MATERIAL DISCLOSED IN THIS DOCUMENT. THIS DOCUMENT IS PROVIDED IN CONFIDENCE AND MAY NOT BE REPRODUCED OR DISCLOSED WITHOUT WRITTEN PERMISSION FROM MICO, INC. COPYRIGHT MICO, INC. ALL RIGHTS RESERVED.

CURVES SHOWN FOR PIN G, PIN D AND PIN E HIGH. REVERSING Vref REVERSES THE CURVE FOR THAT POT.

MICO North Mankato, Minnesota USA		SCALE 0.500		TITLE EPI-T47-RP-BM-10	
DWN JRA 2010-01-04	APVD PROD ENGRG AB 17-NOV-2011	SIZE B	DRAWING NUMBER 07-910-007	REV E	CUSTOMER COPY
X NO X7845-20	APVD ENGRG STR 2011-11-16				