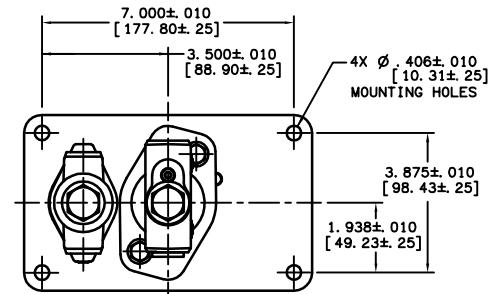
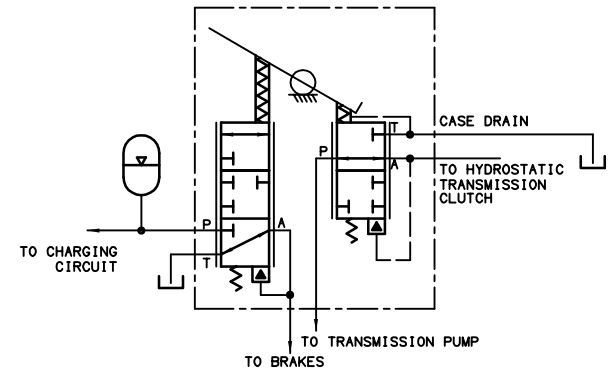
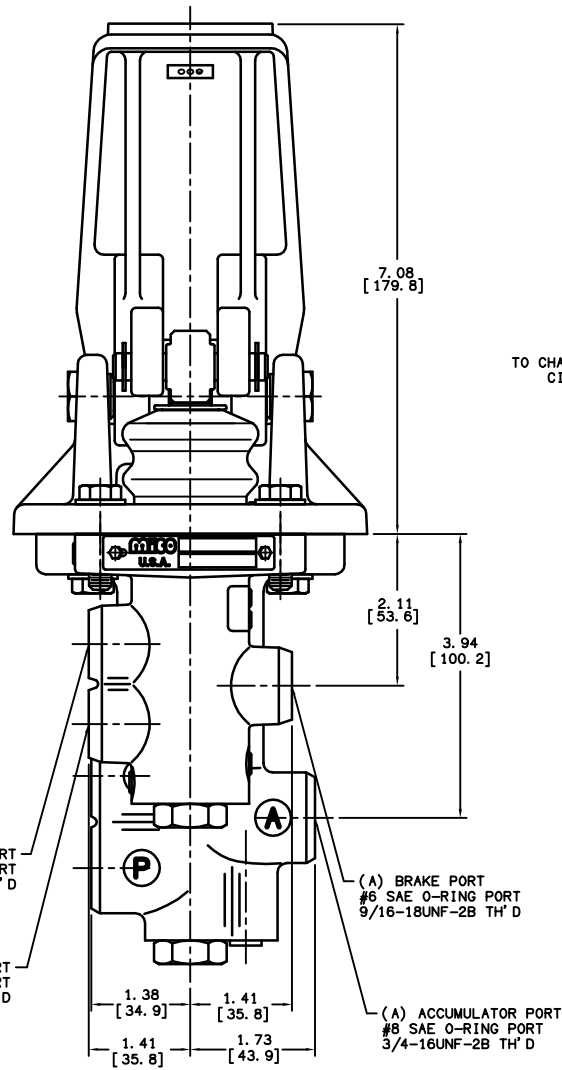
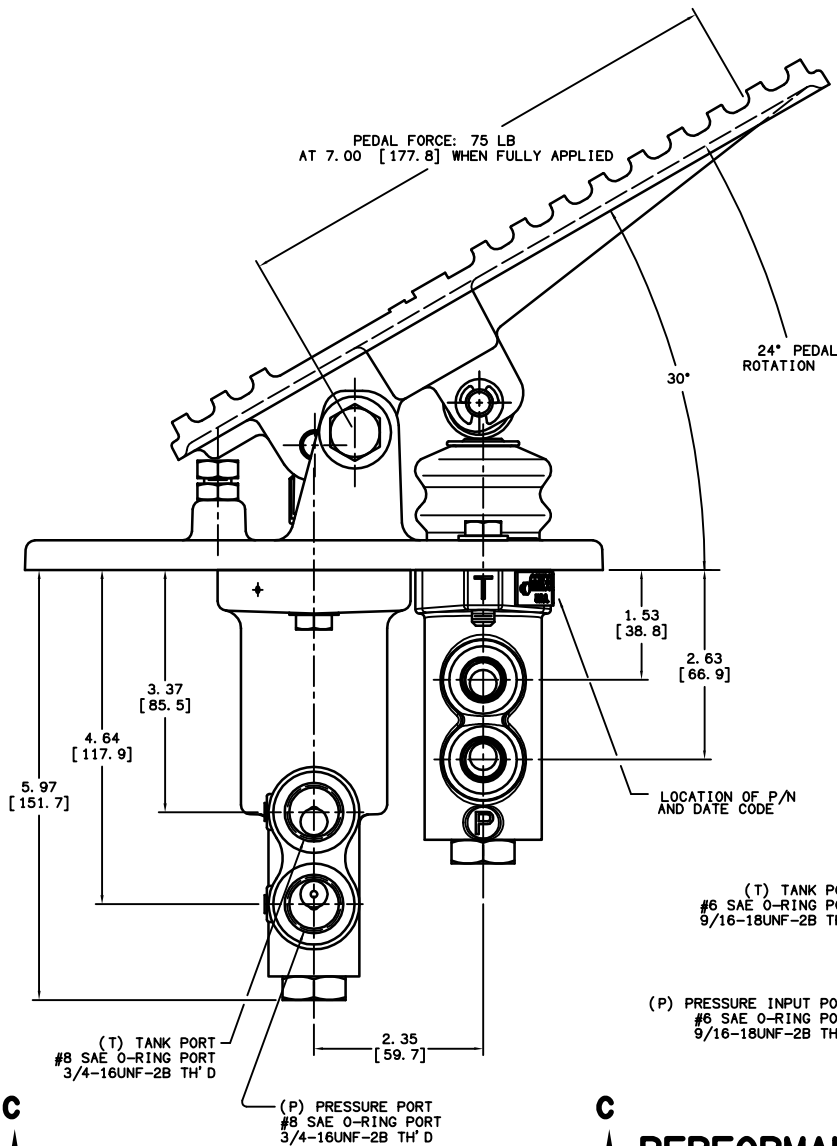


DRAWING NUMBER
06-466-983
NPI OR ECN NO
NPI A000414



VIEW C-C
HALF SCALE

INCH
[MILLIMETER]

PERFORMANCE CHARACTERISTICS:

- 1) BRAKE VALVE SETTING: 2000±50 PSI.
- 2) REVERSE MODULATING VALVE TO BE SET AT 1600±50 PSI.

SERVICE PARTS:

- 1) BRAKE VALVE ASSEMBLY P/N 20-100-515.
- 2) REVERSE MODULATING VALVE ASSEMBLY P/N 20-100-697.
- 3) REPAIR KIT P/N 06-400-160.

NOTES:

- 1) TO BE USED WITH MINERAL BASE HYDRAULIC OIL ONLY.
- 2) DIMENSIONS WILL VARY SLIGHTLY BETWEEN UNITS AND ARE TO BE USED FOR REFERENCE PURPOSES ONLY. MILLIMETER VALUES MAY NOT BE AN EXACT CONVERSION OF INCH VALUES.
- 3) SURFACE COATING: OLIVE DRAB PRIMER PER DOD-P-15328 SPECIFICATION.

COMPONENT AND SYSTEM RECOMMENDATIONS MADE BY MICO, INC ARE BASED ON INFORMATION SUPPLIED BY POTENTIAL USER AND/OR SYSTEM DESIGNER. THE POTENTIAL USER AND/OR DESIGNER MUST MAKE FINAL ACCEPTANCE AND APPROVAL OF COMPONENTS AND SYSTEM AFTER TESTING PERFORMANCE ON AN ACTUAL APPLICATION FOR WHICH SYSTEM WAS DESIGNED.

MICO, INC CLAIMS PROPRIETARY RIGHTS TO THE MATERIAL DISCLOSED IN THIS DOCUMENT. THIS DOCUMENT IS PROVIDED IN CONFIDENCE AND MAY NOT BE REPRODUCED OR DISCLOSED WITHOUT WRITTEN PERMISSION FROM MICO, INC. COPYRIGHT MICO, INC. ALL RIGHTS RESERVED.



SCALE .375	TITLE FULL POWER INCHING VALVE			
DWN JHH 2011-07-11	APVD PROD ENGRG AB 24-OCT-2011	SIZE A	DRAWING NUMBER 06-466-983	REV B
X NO X7934-50	APVD ENGRG JC 2011-07-14	CUSTOMER COPY		