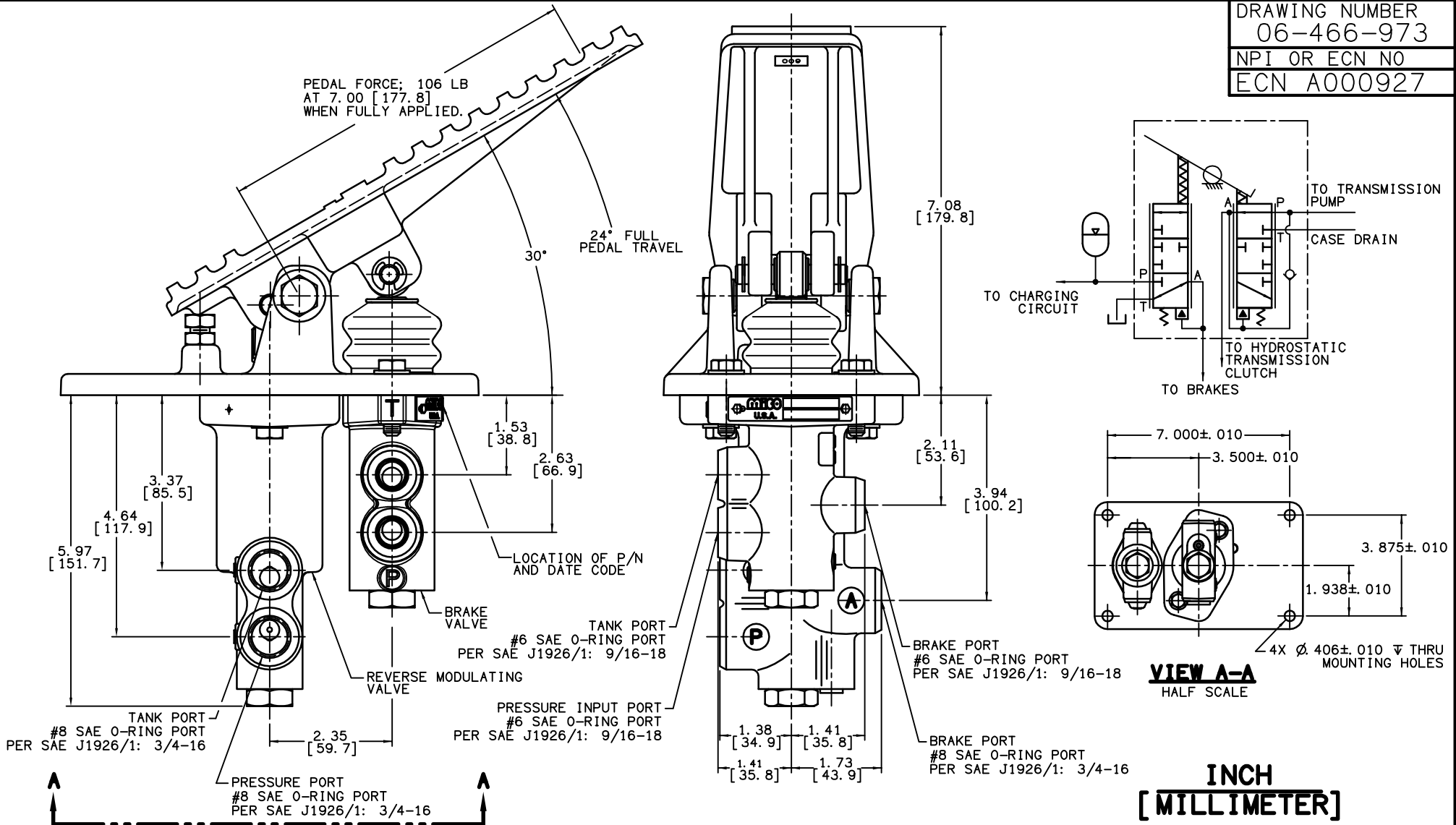


DRAWING NUMBER
06-466-973
NPI OR ECN NO
ECN A000927

PEDAL FORCE: 106 LB
AT 7.00 [177.8]
WHEN FULLY APPLIED.



NOTES:

- 1) TO BE USED WITH MINERAL BASE HYDRAULIC OIL ONLY.
- 2) DIMENSIONS MAY VARY BETWEEN UNITS AND ARE FOR REFERENCE PURPOSES ONLY. MILLIMETER VALUES MAY NOT BE AN EXACT CONVERSION OF INCH VALUES.

PERFORMANCE CHARACTERISTICS:

- 1) BRAKE VALVE SETTING: 400±25 PSI.
- 2) REVERSE MODULATING VALVE TO BE SET AT 2175±100 PSI.

SERVICE PARTS:

- 1) BRAKE VALVE ASSEMBLY P/N 20-100-631.
- 2) REVERSE MODULATING VALVE ASSEMBLY P/N 20-100-755.
- 3) BRAKE VALVE REPAIR KIT P/N 06-400-148.
- 4) REVERSE MODULATING VALVE REPAIR KIT P/N 06-400-150.

MICO, INC CLAIMS PROPRIETARY RIGHTS TO THE MATERIAL DISCLOSED IN THIS DOCUMENT. THIS DOCUMENT IS PROVIDED IN CONFIDENCE AND MAY NOT BE REPRODUCED OR DISCLOSED WITHOUT WRITTEN PERMISSION FROM MICO, INC. COPYRIGHT MICO, INC. ALL RIGHTS RESERVED.



North Mankato, Minnesota USA

COMPONENT AND SYSTEM RECOMMENDATIONS MADE BY MICO, INC ARE BASED ON INFORMATION SUPPLIED BY POTENTIAL USER AND/OR SYSTEM DESIGNER. THE POTENTIAL USER AND/OR DESIGNER MUST MAKE FINAL ACCEPTANCE AND APPROVAL OF COMPONENTS AND SYSTEM AFTER TESTING PERFORMANCE ON AN ACTUAL APPLICATION FOR WHICH SYSTEM WAS DESIGNED.

SCALE 3/8-1	TITLE FULL POWER INCHING VALVE	SIZE A	DRAWING NUMBER 06-466-973	REV B
DWN JRA 2008-08-14	APVD PROD ENGRG AB 07-OCT-2008		CUSTOMER COPY	
X NO X06-1164	APVD ENGRG BSW 2008-09-15			