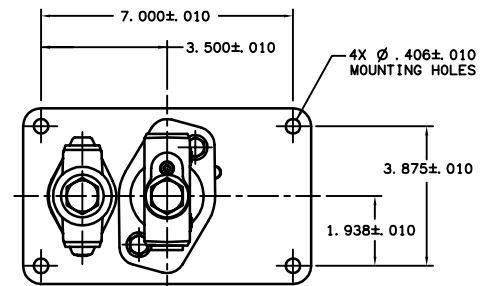
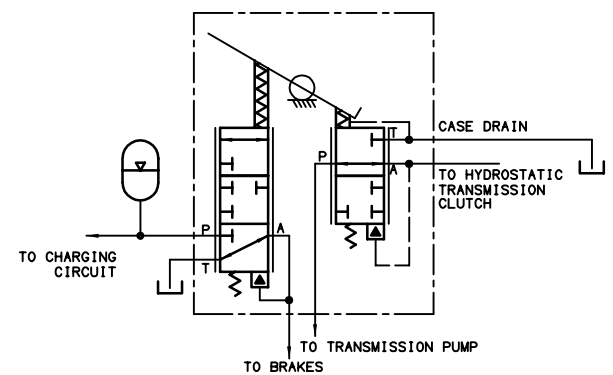
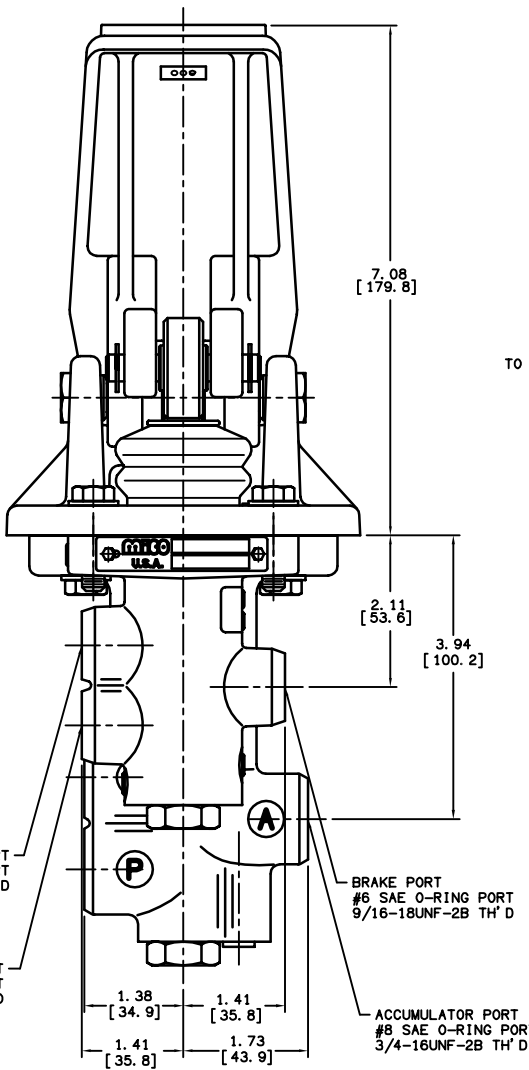
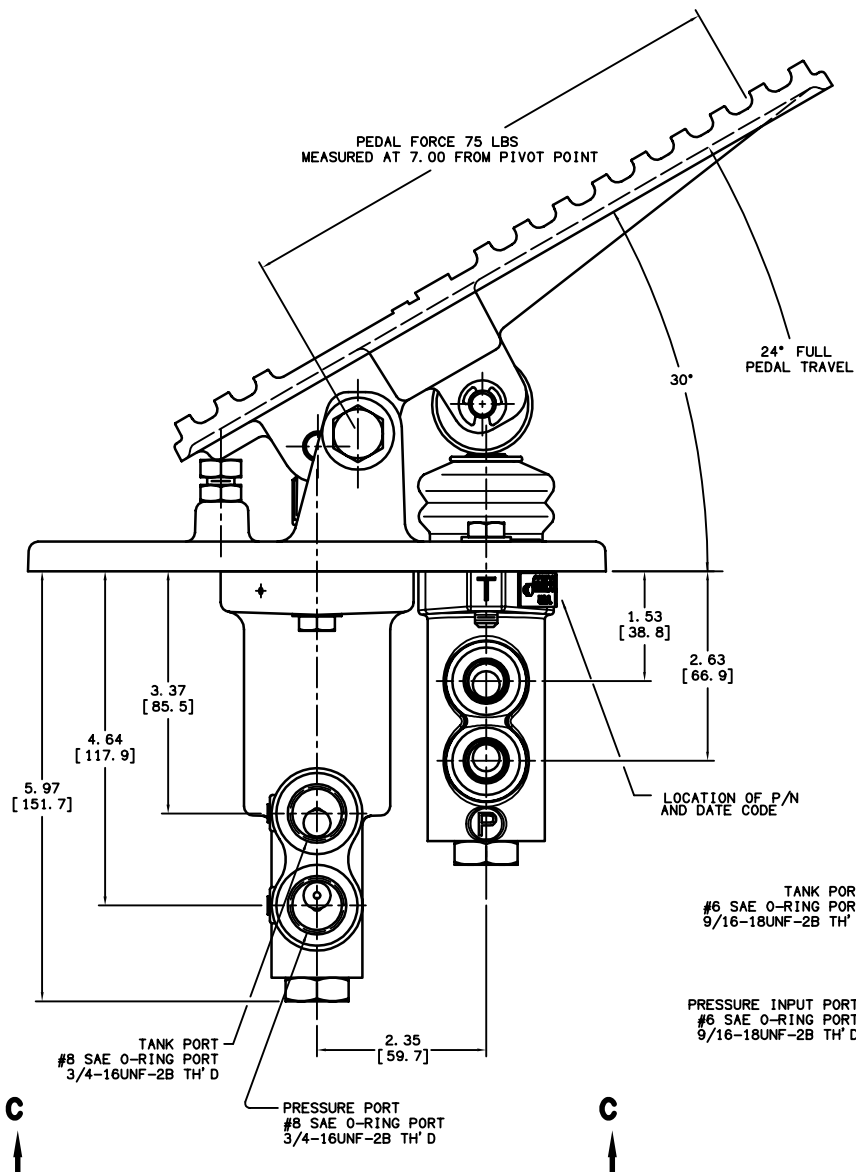


DRAWING NUMBER
06-466-946
NPI OR ECN NO
ECN A000537



VIEW C-C
HALF SCALE

INCH
[MILLIMETER]

NOTES:

- 1) TO BE USED WITH MINERAL BASE HYDRAULIC OIL ONLY.
- 2) DIMENSIONS WILL VARY SLIGHTLY BETWEEN UNITS AND ARE TO BE USED FOR REFERENCE PURPOSES ONLY. MILLIMETER VALUES MAY NOT BE AN EXACT CONVERSION OF INCH VALUES.
- 3) BRAKE VALVE ASSEMBLY P/N 20-100-735.
- 4) REVERSE MODULATING VALVE ASSEMBLY P/N 20-100-734.
- 5) REPAIR KIT P/N 06-400-160.

PERFORMANCE CHARACTERISTICS:

- 1) BRAKE VALVE SETTING: 675±50 PSI.
- 2) REVERSE MODULATING VALVE TO BE SET AT 675±50 PSI.



TITLE FULL POWER INCHING VALVE			
SCALE .375	APVD PROD ENGRG	DRAWING NUMBER 06-466-946	REV B
DRN JJH 10-JUL-03	APVD ENGRG BSW	CUSTOMER COPY	

COMPONENT AND SYSTEM RECOMMENDATIONS MADE BY MICO, INC. ARE BASED ON INFORMATION SUPPLIED BY POTENTIAL USER AND/OR SYSTEM DESIGNER. THE POTENTIAL USER AND/OR DESIGNER MUST MAKE FINAL ACCEPTANCE AND APPROVAL OF COMPONENTS AND SYSTEM AFTER TESTING PERFORMANCE ON AN ACTUAL APPLICATION FOR WHICH SYSTEM WAS DESIGNED.

MICO, INC. CLAIMS PROPRIETARY RIGHTS TO THE MATERIAL DISCLOSED IN THIS DOCUMENT. THIS DOCUMENT IS PROVIDED IN CONFIDENCE AND MAY NOT BE REPRODUCED OR DISCLOSED WITHOUT WRITTEN PERMISSION FROM MICO, INC. COPYRIGHT MICO, INC. ALL RIGHTS RESERVED.