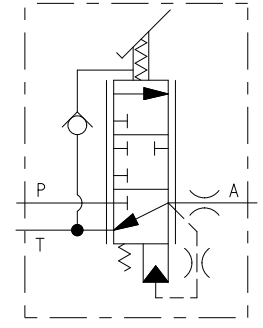


**NOTES:**  
 1) TO BE USED WITH MINERAL BASE HYDRAULIC OIL ONLY.  
 2) DIMENSIONS WITHOUT TOLERANCE MAY VARY BETWEEN UNITS AND ARE FOR REFERENCE PURPOSES ONLY. MILLIMETER VALUES MAY NOT BE AN EXACT CONVERSION OF INCH VALUES.  
 3) VALVE SURFACE FINISH: GREEN PRIMER PAINT.  
 4) ASSEMBLY WEIGHT: 6.9 LB [3.13 KG]  
 5) THE ASSEMBLY P/N IS 06-466-309-R WHEN THE VALVE IS ROTATED 180°.

**PERFORMANCE CHARACTERISTICS:**  
 1) BRAKE PRESSURE SETTING IS 1700±50 PSI [117.2 ±3.4], WITH 2500 PSI [172 bar] INLET PRESSURE AND 15 cSt OIL VISCOSITY.  
 2) MAX. INLET PRESSURE 3000 PSI [207 bar].  
 3) OPERATING TEMPERATURE RANGE: -40 TO +225 °F [-40 TO +107 °C].

**SERVICE PARTS:**  
 1) VALVE ASSEMBLY P/N 20-200-042.  
 2) VALVE REPAIR KIT P/N 06-400-148.



INCH  
(MILLIMETER)

**MICO**  
a WABCO company

SCALE 0.500	TITLE PEDAL MODULATING VALVE		
DWN JJH 2018-06-06	APVD PROD ENGRG WP 2018-07-30	SIZE B	DRAWING NUMBER 06-466-309
X NO X12-6006-050	APVD ENGRG CL 2018-07-28		REV C CUSTOMER COPY

COMPONENT AND SYSTEM RECOMMENDATIONS MADE BY MICO, INC. ARE BASED ON INFORMATION SUPPLIED BY POTENTIAL USER AND/OR SYSTEM DESIGNER. THE POTENTIAL USER AND/OR DESIGNER MUST MAKE FINAL ACCEPTANCE AND APPROVAL OF COMPONENTS AND SYSTEM AFTER TESTING PERFORMANCE ON AN ACTUAL APPLICATION FOR WHICH SYSTEM WAS DESIGNED.

MICO, INC. CLAIMS PROPRIETARY RIGHTS TO THE MATERIAL DISCLOSED IN THIS DOCUMENT. THIS DOCUMENT IS PROVIDED IN CONFIDENCE AND MAY NOT BE REPRODUCED OR DISCLOSED WITHOUT WRITTEN PERMISSION FROM MICO, INC. COPYRIGHT MICO, INC. ALL RIGHTS RESERVED.