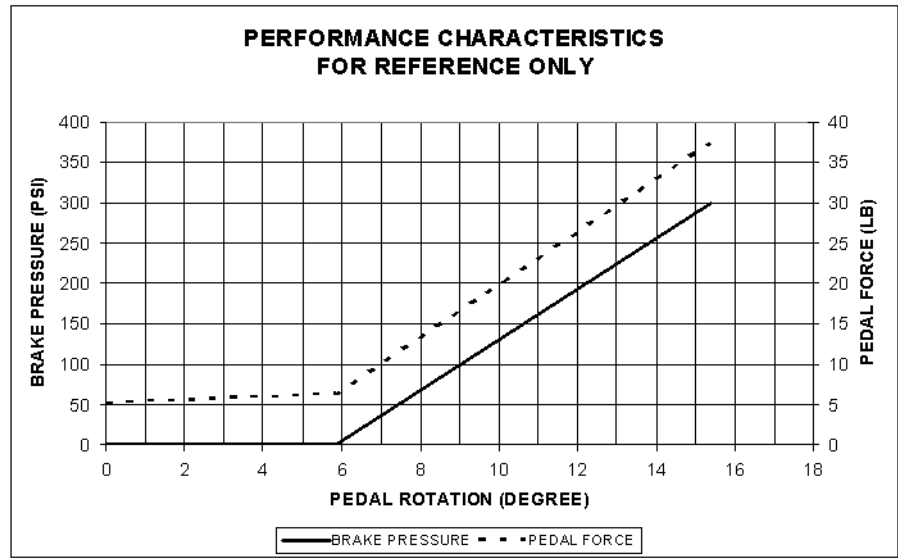


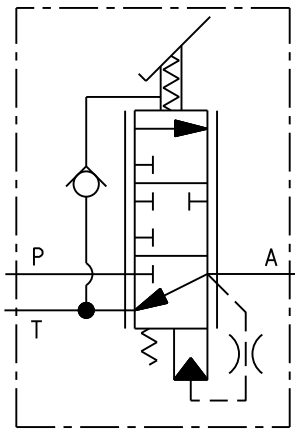
VIEW A-A



- NOTES:**
1. TO BE USED WITH MINERAL BASE HYDRAULIC OIL ONLY.
 2. DIMENSIONS MAY VARY BETWEEN UNITS AND ARE FOR REFERENCE PURPOSES ONLY. MILLIMETER VALUES MAY NOT BE AN EXACT CONVERSION OF INCH VALUES.
 3. VALVE SURFACE COATING: SEMI-GLOSS BLACK POLYURETHANE ENAMEL PAINT.
 4. WHEN THE VALVE IS ROTATED 180°, THE PART NUMBER IS 06-466-304-R.

- PERFORMANCE CHARACTERISTICS:**
1. BRAKE PRESSURE SETTING IS 300±25 PSI [20.7±1.7 bar] WITH 1000 PSI [69.0 bar] INLET PRESSURE AND 15 cSt OIL VISCOSITY.
 2. MAXIMUM INPUT PRESSURE IS 3000 PSI [206.9 bar].
 3. OPERATING TEMPERATURE RANGE: -40 TO +225 °F [-40 TO +107 °C].

- SERVICE PARTS:**
1. VALVE ASSEMBLY P/N 20-200-026.
 2. REPAIR KIT P/N 06-400-148.



INCH
[MILLIMETER]

COMPONENT AND SYSTEM RECOMMENDATIONS MADE BY MICO, INC ARE BASED ON INFORMATION SUPPLIED BY POTENTIAL USER AND/OR SYSTEM DESIGNER. THE POTENTIAL USER AND/OR DESIGNER MUST MAKE FINAL ACCEPTANCE AND APPROVAL OF COMPONENTS AND SYSTEM AFTER TESTING PERFORMANCE ON AN ACTUAL APPLICATION FOR WHICH SYSTEM WAS DESIGNED.		MICO, INC CLAIMS PROPRIETARY RIGHTS TO THE MATERIAL DISCLOSED IN THIS DOCUMENT. THIS DOCUMENT IS PROVIDED IN CONFIDENCE AND MAY NOT BE REPRODUCED OR DISCLOSED WITHOUT WRITTEN PERMISSION FROM MICO, INC. COPYRIGHT MICO, INC. ALL RIGHTS RESERVED.	
SCALE 0.500	TITLE PEDAL MODULATING VALVE		
DWN JRA 2011-07-05	APVD PROD ENGRG DPD 2012-01-26	SIZE B	DRAWING NUMBER 06-466-304
X NO X10-4112-000	APVD ENGRG JC 2012-01-09	REV A	CUSTOMER COPY

