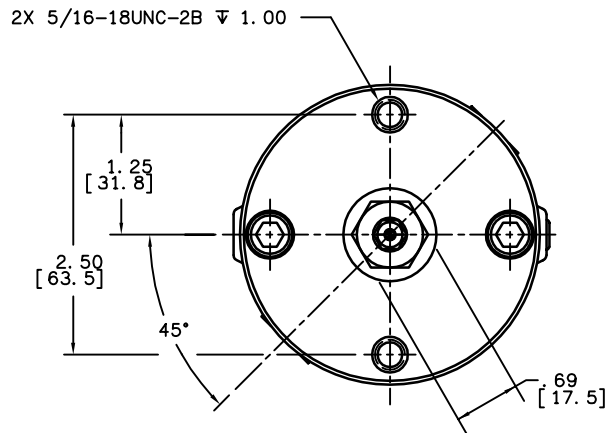
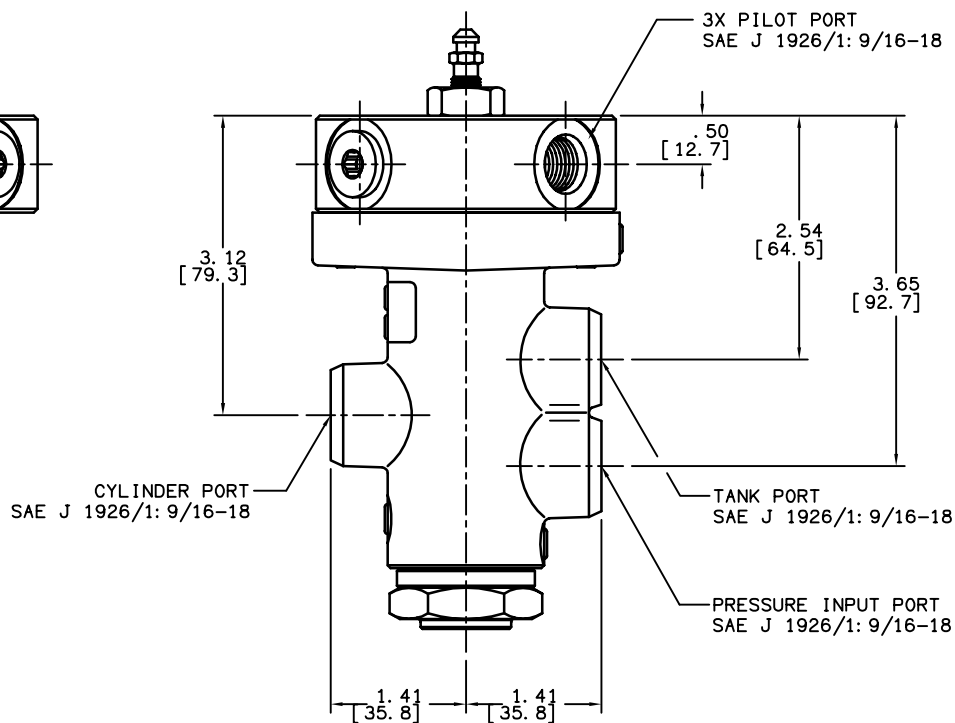
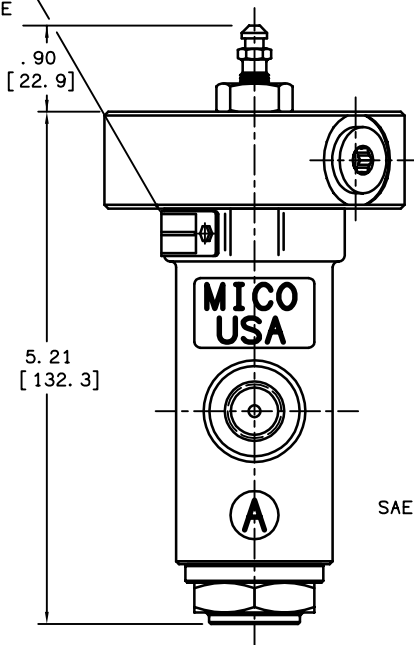


PART NUMBER
06-464-950
NPI OR ECN NO.
ECN A000247

INCHES
[MILLIMETERS]



P/N & DATE CODE
LOCATED HERE



COMPONENT AND SYSTEM RECOMMENDATIONS MADE BY MICO, INC. ARE BASED ON INFORMATION SUPPLIED BY POTENTIAL USER AND/OR SYSTEM DESIGNER. THE POTENTIAL USER AND/OR DESIGNER MUST MAKE FINAL ACCEPTANCE AND APPROVAL OF COMPONENTS AND SYSTEM AFTER TESTING PERFORMANCE ON AN ACTUAL APPLICATION FOR WHICH SYSTEM WAS DESIGNED.

NOTES:

1. TO BE USED WITH MINERAL BASE HYDRAULIC OIL ONLY.
2. DIMENSIONS MAY VARY SLIGHTLY BETWEEN UNITS AND ARE TO BE USED FOR REFERENCE PURPOSES ONLY.
3. REPAIR KIT P/N 06-400-131.

PERFORMANCE CHARACTERISTICS (REF):

1. INPUT PRESSURE OF 650 PSI AT THE PILOT PORT WILL PRODUCE AN OUTPUT PRESSURE OF 2175 PSI AT THE CYLINDER PORT.

MICO, INC. CLAIMS PROPRIETARY RIGHTS TO THE MATERIAL DISCLOSED IN THIS DOCUMENT. THIS DOCUMENT IS PROVIDED IN CONFIDENCE AND MAY NOT BE REPRODUCED OR DISCLOSED WITHOUT WRITTEN PERMISSION FROM MICO, INC. COPYRIGHT MICO, INC. ALL RIGHTS RESERVED.



TITLE			
RELAY VALVE			
SCALE	CHECKED	PART NUMBER	REV
1/2	SH	06-464-950	D
DRN JRA	APP ENG	CUSTOMER COPY	
2/7/01	GAA		