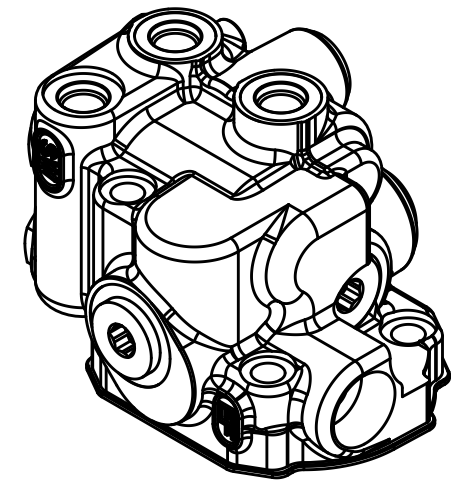
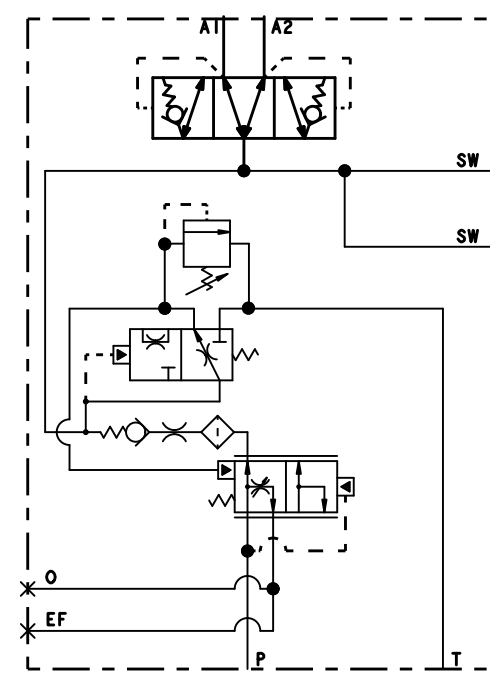
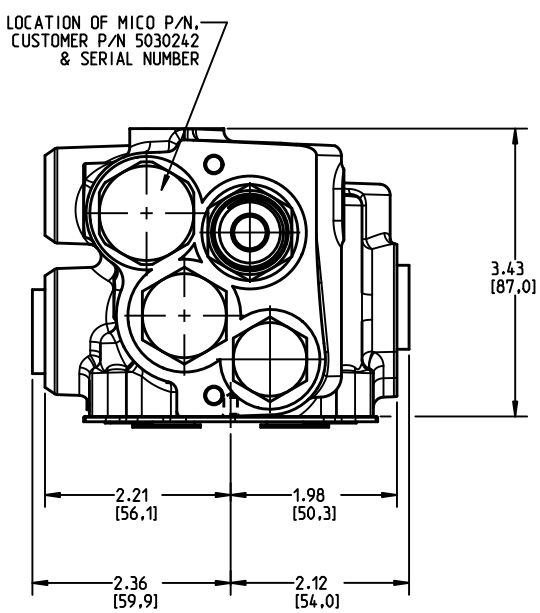


NOTES:
 1) FOR USE WITH MINERAL BASE HYDRAULIC OIL ONLY.
 2) DIMENSIONS MAY VARY BETWEEN UNITS AND ARE FOR REFERENCE PURPOSES ONLY. MILLIMETER VALUES MAY NOT BE AN EXACT CONVERSION OF INCH VALUES.
 3) CHARGE VALVE REPAIR KIT P/N 06-400-182.

PERFORMANCE CHARACTERISTICS:
 1) RELIEF VALVE SET AT 2500±100 PSI.
 2) ACCUMULATOR CHARGING LIMITS ARE SET AT 1400±50 PSI LOW LIMIT TO 2100±50 PSI HIGH LIMIT.
 3) ACCUMULATOR CHARGE RATE IS 0.75±0.25 GPM AT 1000 PSI.
 4) INTERNAL FILTRATION IS 54 MICRON OR BETTER.
 5) EXTERNAL FILTRATION OF 10 MICRON OR BETTER IS REQUIRED.



INCH
(MILLIMETER)

COMPONENT AND SYSTEM RECOMMENDATIONS MADE BY MICO, INC ARE BASED ON INFORMATION SUPPLIED BY POTENTIAL USER AND/OR SYSTEM DESIGNER. THE POTENTIAL USER AND/OR DESIGNER MUST MAKE FINAL ACCEPTANCE AND APPROVAL OF COMPONENTS AND SYSTEM AFTER TESTING PERFORMANCE ON AN ACTUAL APPLICATION FOR WHICH SYSTEM WAS DESIGNED.

MICO, INC CLAIMS PROPRIETARY RIGHTS TO THE MATERIAL DISCLOSED IN THIS DOCUMENT. THIS DOCUMENT IS PROVIDED IN CONFIDENCE AND MAY NOT BE REPRODUCED OR DISCLOSED WITHOUT WRITTEN PERMISSION FROM MICO, INC. COPYRIGHT MICO, INC. ALL RIGHTS RESERVED.

SCALE 0.438	TITLE ACV-DMQ-RV			REV
DWN JRA 2014-11-17	APVD PROD ENGR DPD 2014-11-19	SIZE B	DRAWING NUMBER 06-463-602	K
X NO X5482	APVD ENGR PWB 2014-11-18	CUSTOMER COPY		4 13