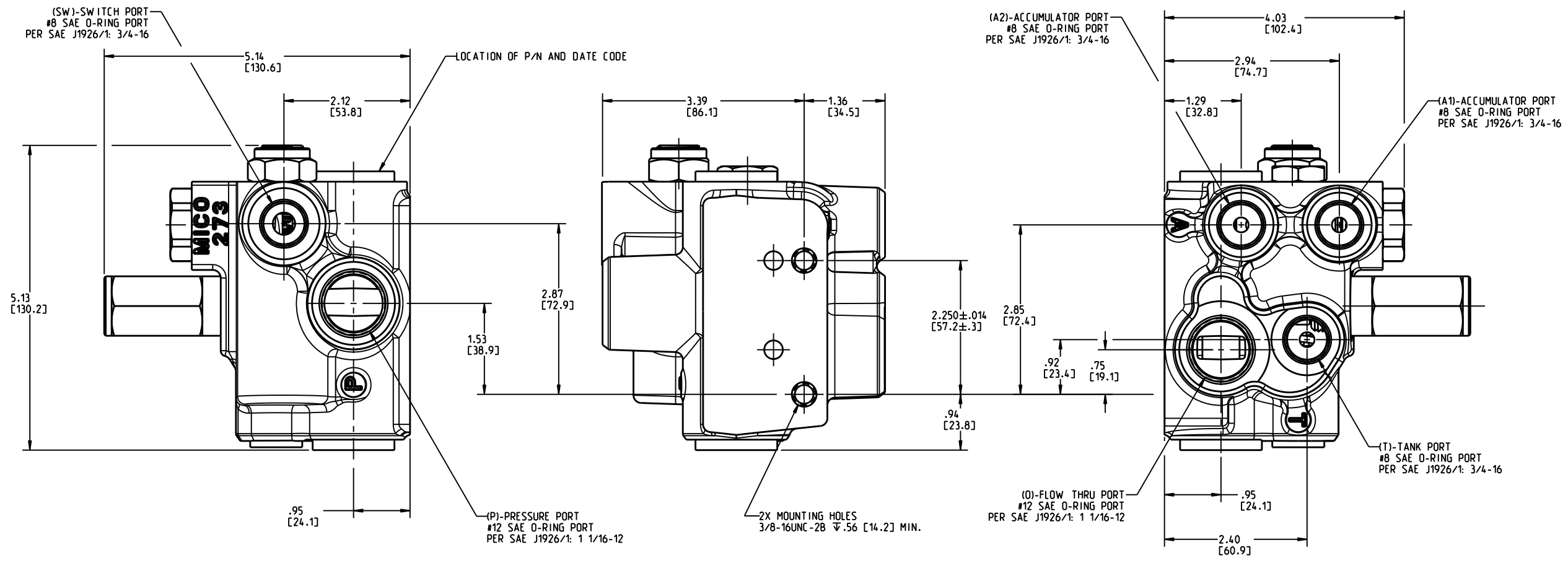
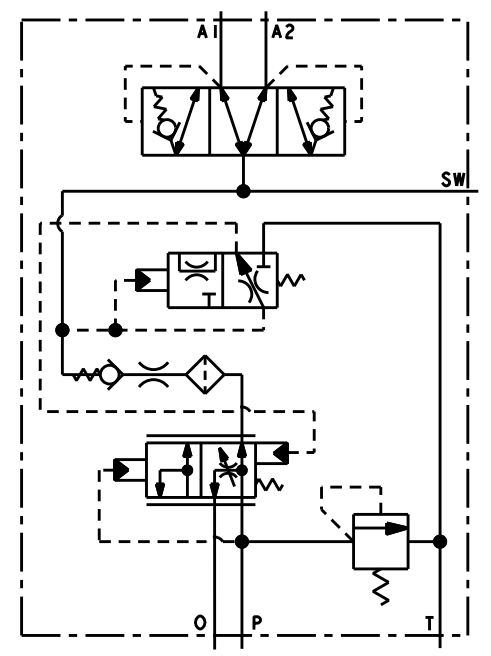


DRAWING NUMBER  
06-463-421  
NPI OR ECN NO  
ECN E000363



RELIEF VALVE SETTING (AT CRACKING FLOW)	ACCUMULATOR CHARGING LOW LIMIT (PSI [bar])	ACCUMULATOR CHARGING HIGH LIMIT (PSI [bar])	ACCUMULATOR CHARGE RATE (GPM [LPM])	REPAIR KIT P/N	INTERNAL FILTRATION
2500±50 PSI [172.4±3.4 bar]	1800±50 [124.1±3.4]	2200±50 [151.7±3.4]	0.75±0.25 [2.8±0.9]	06-400-184	54 MICRON OR BETTER



- NOTES:**
- FOR USE WITH MINERAL BASE HYDRAULIC OIL.
  - DIMENSIONS MAY VARY BETWEEN UNITS AND ARE FOR REFERENCE PURPOSES ONLY. MILLIMETER VALUES MAY NOT BE AN EXACT CONVERSION OF INCH VALUES.
  - SURFACE COATING: OLIVE DRAB PRIMER PER DOD-P-15328 SPECIFICATION.
- PERFORMANCE CHARACTERISTICS:**
- RECOMMENDED SYSTEM FLOW 2 TO 30 GPM [7.6 TO 113.7 LPM].
  - FLOW THRU PRESSURE DROP IS APPROXIMATELY 70 PSI AT 15 GPM WITH 14 CENTISTROKE OIL.
  - EXTERNAL FILTRATION OF 10 MICRON OR BETTER IS REQUIRED.
  - SEAL MATERIAL: NITRILE

**INCHES  
[MILLIMETERS]**



COMPONENT AND SYSTEM RECOMMENDATIONS MADE BY MICO, INC ARE BASED ON INFORMATION SUPPLIED BY POTENTIAL USER AND/OR SYSTEM DESIGNER. THE POTENTIAL USER AND/OR DESIGNER MUST MAKE FINAL ACCEPTANCE AND APPROVAL OF COMPONENTS AND SYSTEM AFTER TESTING PERFORMANCE ON AN ACTUAL APPLICATION FOR WHICH SYSTEM WAS DESIGNED.		MICO, INC CLAIMS PROPRIETARY RIGHTS TO THE MATERIAL DISCLOSED IN THIS DOCUMENT. THIS DOCUMENT IS PROVIDED IN CONFIDENCE AND MAY NOT BE REPRODUCED OR DISCLOSED WITHOUT WRITTEN PERMISSION FROM MICO, INC. COPYRIGHT MICO, INC. ALL RIGHTS RESERVED.	
SCALE 0.500	TITLE ACV-DM011-RV172-124-152-3	SIZE B	DRAWING NUMBER 06-463-421
DWN CL 2011-01-11	APVD PROD ENGRG DPD 2011-01-17	REV B	CUSTOMER COPY
X NO 10-4205	APVD ENGRG PWB 2011-01-13		