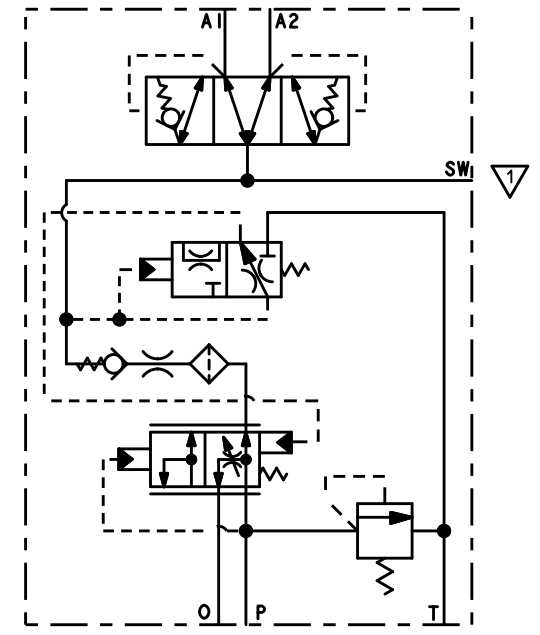


PART NUMBER	REVISION	DESCRIPTION	RELIEF VALVE SETTING	ACCUMULATOR CHARGING LOW LIMIT (PSI [bar])	ACCUMULATOR CHARGING HIGH LIMIT (PSI [bar])	ACCUMULATOR CHARGE RATE (GPM [LPM])	REPAIR KIT P/N	INTERNAL FILTRATION
06-463-401	F	ACV-DM011-RV193-145-179-17U	2800±50 PSI [193.1±3.4 bar] AT CRACKING	2100±50 [144.8±3.4]	2600±50 [179.3±3.4]	4.5±0.5 [17.0±1.9]	06-400-299	NONE
06-463-415	C	ACV-DM011-RV138-86-103-10	2000±50 PSI AT 5.0 GPM [137.9±3.4 bar AT 19 LPM]	1250±50 [86.2±3.4]	1500±50 [103.4±3.4]	2.7±0.5 [10.2±1.9]	06-400-184	54 MICRON OR BETTER
06-463-424	H	ACV-DM011-RV203-155-186-10	2950±50 PSI AT 5.0 GPM [203.4±3.4 bar AT 19 LPM]	2250±50 [155.1±3.4]	2700±50 [186.2±3.4]	2.7±0.5 [10.2±1.9]	06-400-184	54 MICRON OR BETTER
06-463-425	C	ACV-DM011-RV203-147-176-14	2950±50 PSI AT 5.0 GPM [203.4±3.4 bar AT 19 LPM]	2125±50 [146.5±3.4]	2550±50 [175.8±3.4]	3.7±0.5 [14.0±1.9]	06-400-452	100 MICRON NOMINAL
06-463-426	F	ACV-DM011-RV202-150-181-3	2925±50 PSI AT 5.0 GPM [201.7±3.4 bar AT 19 LPM]	2175±50 [150.0±3.4]	2625±50 [181.0±3.4]	0.75±0.25 [2.8±0.9]	06-400-184	54 MICRON OR BETTER
06-463-432	G	ACV-DM011-RV172-126-155-10	2500±50 PSI AT 5.0 GPM [172.4±3.4 bar AT 19 LPM]	1825±50 [125.8±3.4]	2250±50 [155.1±3.4]	2.7±0.5 [10.2±1.9]	06-400-184	54 MICRON OR BETTER
06-463-434	F	ACV-DM011-RV145-103-128-10	2100±50 PSI AT 5.0 GPM [144.8±3.4 bar AT 19 LPM]	1500±50 [103.4±3.4]	1850±50 [127.6±3.4]	2.7±0.5 [10.2±1.9]	06-400-184	54 MICRON OR BETTER
06-463-435	B	ACV-DM011-RV160-86-103-10	2320±50 PSI AT 5.0 GPM [160.0±3.4 bar AT 19 LPM]	1250±50 [86.2±3.4]	1500±50 [103.4±3.4]	2.7±0.5 [10.2±1.9]	06-400-439	100 MICRON NOMINAL
06-463-439	C	ACV-DM011-RV182-150-169-10	2640±45 PSI AT 5.0 GPM [182.0±3.0 bar AT 19 LPM]	2175±50 [150.0±3.4]	2450±50 [169.0±3.4]	2.7±0.5 [10.2±1.9]	06-400-439	100 MICRON NOMINAL
06-463-440	F	ACV-DM011-RV210-138-193-19	3050±50 PSI AT 8.0 GPM [210.3±3.4 bar AT 30 LPM]	2000±50 [137.9±3.4]	2800±50 [193.1±3.4]	5.0±1.0 [18.9±3.8]	06-400-228	54 MICRON OR BETTER
06-463-441	B	ACV-DM011-RV210-103-128-3	3050±50 PSI AT 5.0 GPM [210.3±3.4 bar AT 19 LPM]	1500±50 [103.4±3.4]	1850±50 [127.6±3.4]	0.75±0.25 [2.8±0.9]	06-400-439	100 MICRON NOMINAL
06-463-453	B	ACV-DM011-RV138-86-103-3	2000±50 PSI AT 5.0 GPM [137.9±3.4 bar AT 19 LPM]	1250±50 [86.2±3.4]	1500±50 [103.4±3.4]	0.75±0.25 [2.8±0.9]	06-400-439	100 MICRON NOMINAL
06-463-496	D	ACV-DM011-RV207-140-189-10	3000±50 PSI AT 5.0 GPM [206.8±3.4 bar AT 19 LPM]	2035±50 [140.3±3.4]	2735±50 [188.6±3.4]	2.7±0.5 [10.2±1.9]	06-400-184	54 MICRON OR BETTER



NOT ALL MODELS INCLUDE  
INTERNAL FILTRATION SHOWN

- NOTES:**
- FOR USE WITH MINERAL BASE HYDRAULIC OIL.
  - DIMENSIONS MAY VARY BETWEEN UNITS AND ARE FOR REFERENCE PURPOSES ONLY. MILLIMETER VALUES MAY NOT BE AN EXACT CONVERSION OF INCH VALUES.
  - SEE CHART FOR REPAIR KIT P/N.
  - SURFACE COATING: OLIVE DRAB PRIMER PER DOD-P-15328 SPECIFICATION.

- PERFORMANCE CHARACTERISTICS:**
- RECOMMENDED SYSTEM FLOW 2 TO 30 GPM [7.6 TO 113.7 LPM].
  - FLOW THRU PRESSURE DROP IS APPROXIMATELY 70 PSI AT 15 GPM WITH 14 CENTISTOKE OIL.
  - EXTERNAL FILTRATION OF 10 MICRON OR BETTER IS REQUIRED.
  - THE SW PORT IS PLUGGED IN PART NUMBER 06-463-432.
  - SEAL MATERIAL: NITRILE

INCH  
[MILLIMETER]



COMPONENT AND SYSTEM RECOMMENDATIONS MADE BY MICO, INC ARE BASED ON INFORMATION SUPPLIED BY POTENTIAL USER AND/OR SYSTEM DESIGNER. THE POTENTIAL USER AND/OR DESIGNER MUST MAKE FINAL ACCEPTANCE AND APPROVAL OF COMPONENTS AND SYSTEM AFTER TESTING PERFORMANCE ON AN ACTUAL APPLICATION FOR WHICH SYSTEM WAS DESIGNED.

MICO, INC CLAIMS PROPRIETARY RIGHTS TO THE MATERIAL DISCLOSED IN THIS DOCUMENT. THIS DOCUMENT IS PROVIDED IN CONFIDENCE AND MAY NOT BE REPRODUCED OR DISCLOSED WITHOUT WRITTEN PERMISSION FROM MICO, INC. COPYRIGHT MICO, INC. ALL RIGHTS RESERVED.

SCALE 0.500	TITLE ACV-DMQ-RV	SIZE B	DRAWING NUMBER 06-463-403	REV P
DWN JRA 2015-10-05	APVD PROD ENGRG DPD 2015-11-02		CUSTOMER COPY	2 3
X NO SEE CHART	APVD ENGRG PWB 2015-10-22			