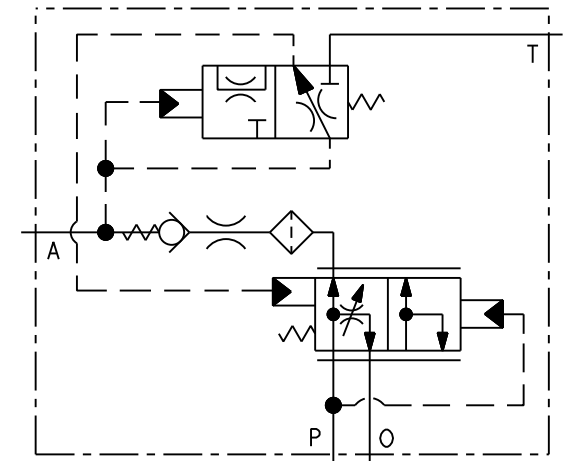


PART NUMBER	DESCRIPTION	REVISION	ALLOWABLE SYSTEM RELIEF VALVE PRESSURE (PSI [bar])	ACCUMULATOR CHARGING LOW LIMIT (PSI [bar])	ACCUMULATOR CHARGING HIGH LIMIT (PSI [bar])	ACCUMULATOR CHARGE RATE (GPM [LPM])
06-463-008	ACV-SM011-67-95-10	J	2300±700 [158.6±48.3]	975±50 [67.2±3.4]	1375±25 [94.8±1.7]	2.6±0.6 [9.8±2.3]
06-463-010	ACV-SM011-41-90-10	H	2250±750 [155.1±51.7]	600±50 [41.4±3.4]	1300±25 [89.6±1.7]	2.6±0.6 [9.8±2.3]
06-463-012	ACV-SM011-94-124-6	H	2525±475 [174.1±32.8]	1362.5±37.5 [93.9±2.6]	1800±50 [124.1±3.4]	1.7±0.5 [6.4±1.9]
06-463-014	ACV-SM011-55-76-6	F	2150±850 [148.2±58.6]	800±50 [55.2±3.4]	1100±50 [75.8±3.4]	1.7±0.5 [6.4±1.9]
06-463-016	ACV-SM011-83-103-6	F	2350±650 [162.0±44.8]	1200±50 [82.7±3.4]	1500±50 [103.4±3.4]	1.7±0.5 [6.4±1.9]
06-463-018	ACV-SM011-145-190-10	F	3050±50 [210.3±3.4]	2100±50 [144.8±3.4]	2750±50 [189.6±3.4]	2.7±0.5 [10.2±1.9]
06-463-020	ACV-SM011-128-159-10	F	2750±250 [189.6±17.2]	1850±50 [127.6±3.4]	2300±50 [158.6±3.4]	2.7±0.5 [10.2±1.9]
06-463-022	ACV-SM011-155-186-10	G	3050±150 [210.3±10.3]	2250±25 [155.1±1.7]	2700±50 [186.2±3.4]	2.7±0.5 [10.2±1.9]
06-463-024	ACV-SM011-103-128-10	F	2550±450 [175.8±31.0]	1500±50 [103.4±3.4]	1850±50 [127.6±3.4]	2.7±0.5 [10.2±1.9]
06-463-026	ACV-SM011-103-138-3	F	2600±400 [179.3±27.6]	1500±50 [103.4±3.4]	2000±50 [137.9±3.4]	0.75±0.25 [2.8±0.9]
06-463-028	ACV-SM011-94-124-10	F	2550±550 [175.8±37.9]	1362.5±37.5 [93.9±2.6]	1800±50 [124.1±3.4]	2.7±0.5 [10.2±1.9]
06-463-030	ACV-SM011-55-76-6	F	2150±850 [148.2±58.6]	800±50 [55.2±3.4]	1100±50 [75.8±3.4]	1.7±0.5 [6.4±1.9]
06-463-032	ACV-SM011-103-128-10	F	2550±450 [175.8±31.0]	1500±50 [103.4±3.4]	1850±50 [127.6±3.4]	2.7±0.5 [10.2±1.9]
06-463-034	ACV-SM011-124-152-6	F	2700±300 [186.2±20.7]	1800±50 [124.1±3.4]	2200±50 [151.7±3.4]	1.7±0.5 [6.4±1.9]
06-463-036	ACV-SM011-114-138-17	G	2625±375 [181.0±25.9]	1650±50 [113.8±3.4]	2000±50 [137.9±3.4]	4.5±0.5 [17.0±1.9]
06-463-038	ACV-SM011-86-124-3	H	2525±475 [174.1±32.8]	1250±50 [86.2±3.4]	1800±50 [124.1±3.4]	0.75±0.25 [2.8±0.9]
06-463-040	ACV-SM011-114-138-10	F	2625±375 [181.0±25.9]	1650±50 [113.8±3.4]	2000±50 [137.9±3.4]	2.7±0.5 [10.2±1.9]
06-463-044	ACV-SM011-86-124-4	G	2525±475 [174.1±32.8]	1250±50 [86.2±3.4]	1800±50 [124.1±3.4]	1.0±0.3 [3.8±1.1]
06-463-048	ACV-SM011-103-138-6	E	2600±400 [179.3±27.6]	1500±50 [103.4±3.4]	2000±50 [137.9±3.4]	1.7±0.5 [6.4±1.9]
06-463-050	ACV-SM011-117-145-6	E	2650±350 [182.7±24.1]	1700±50 [117.2±3.4]	2100±50 [144.8±3.4]	1.7±0.5 [6.4±1.9]
06-463-052	ACV-SM011-114-138-6	E	2625±375 [181.0±25.9]	1650±50 [113.8±3.4]	2000±50 [137.9±3.4]	1.7±0.5 [6.4±1.9]
06-463-054	ACV-SM011-72-103-3	E	2350±650 [162.0±44.8]	1050±50 [72.4±3.4]	1500±50 [103.4±3.4]	0.75±0.25 [2.8±0.9]
06-463-056	ACV-SM011-93-124-3	D	2525±475 [174.1±32.8]	1350±50 [93.1±3.4]	1800±50 [124.1±3.4]	0.75±0.25 [2.8±0.9]
06-463-058	ACV-SM011-114-138-3	D	2650±350 [182.7±24.1]	1650±50 [113.8±3.4]	2000±50 [137.9±3.4]	0.75±0.25 [2.8±0.9]
06-463-060	ACV-SM011-45-60-3	D	2150±850 [148.2±58.6]	650±25 [44.8±1.7]	875±25 [60.3±1.7]	0.75±0.25 [2.8±0.9]
06-463-064	ACV-SM011-128-159-3	C	2750±250 [189.6±17.2]	1850±50 [127.6±3.4]	2300±50 [158.6±3.4]	0.75±0.25 [2.8±0.9]
06-463-066	ACV-SM011-48-90-6	C	2250±750 [155.1±51.7]	700±50 [48.3±3.4]	1300±25 [89.6±1.7]	1.7±0.5 [6.4±1.9]
06-463-078	ACV-SM011-116-159-10	A	2750±250 [189.6±17.2]	1675±50 [115.5±3.4]	2300±50 [158.6±3.4]	2.7±0.5 [10.2±1.9]



INCH
[MILLIMETER]

NOTES:

- FOR USE WITH MINERAL BASE HYDRAULIC OIL ONLY.
- DIMENSIONS MAY VARY BETWEEN UNITS AND ARE FOR REFERENCE PURPOSES ONLY. MILLIMETER VALUES MAY NOT BE AN EXACT CONVERSION OF INCH VALUES.
- REPAIR KIT P/N 06-400-099.
- SURFACE COATING: OLIVE DRAB PRIMER PER DOD-P-15328 SPECIFICATION.

PERFORMANCE CHARACTERISTICS:

- SYSTEM RELIEF VALVE NOT INCLUDED.
- FLOW THRU PRESSURE DROP IS APPROXIMATELY 70 PSI AT 15 GPM [4.8 bar AT 57 LPM] WITH 14 cSt OIL.
- RECOMMENDED SYSTEM FLOW: 2 TO 30 GPM [7.6 TO 114 LPM].
- INTERNAL FILTRATION IS 54 MICRON OR BETTER.
- EXTERNAL FILTRATION OF 10 MICRON OR BETTER IS REQUIRED.

COMPONENT AND SYSTEM RECOMMENDATIONS MADE BY MICO, INC ARE BASED ON INFORMATION SUPPLIED BY POTENTIAL USER AND/OR SYSTEM DESIGNER. THE POTENTIAL USER AND/OR DESIGNER MUST MAKE FINAL ACCEPTANCE AND APPROVAL OF COMPONENTS AND SYSTEM AFTER TESTING PERFORMANCE ON AN ACTUAL APPLICATION FOR WHICH SYSTEM WAS DESIGNED.

MICO, INC CLAIMS PROPRIETARY RIGHTS TO THE MATERIAL DISCLOSED IN THIS DOCUMENT. THIS DOCUMENT IS PROVIDED IN CONFIDENCE AND MAY NOT BE REPRODUCED OR DISCLOSED WITHOUT WRITTEN PERMISSION FROM MICO, INC. COPYRIGHT MICO, INC. ALL RIGHTS RESERVED.

MICO
North Mankato, Minnesota USA

SCALE 0.500		TITLE ACV-SM011	
DWN MAP 2012-03-13	APVD PROD ENGRG	SIZE B	DRAWING NUMBER 06-463-076
X NO SEE CHART	APVD ENGRG PWB 2012-03-15	REV D CUSTOMER COPY	