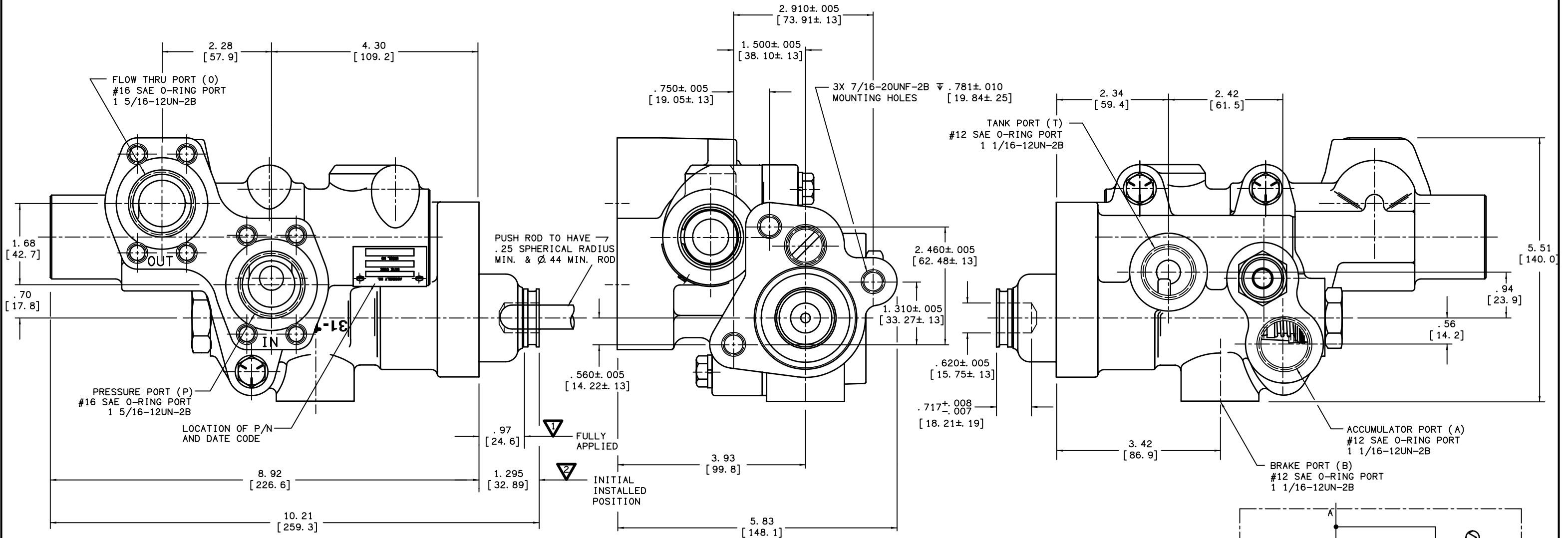


PART NUMBER
06-460-894
NPI OR ECN NO.
ECN A000193



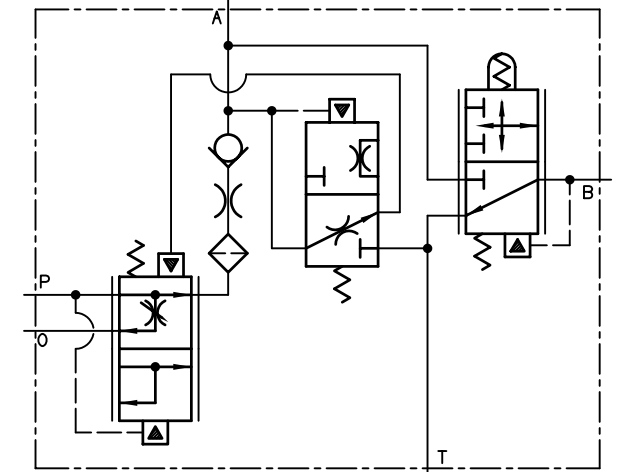
NOTES:

1. FOR USE WITH MINERAL BASE HYDRAULIC OIL ONLY.
2. DIMENSIONS MAY VARY BETWEEN UNITS AND ARE FOR REFERENCE PURPOSES ONLY. MILLIMETER VALUES MAY NOT BE AN EXACT CONVERSION OF INCH VALUES.
3. REPAIR KIT P/N 06-459-024.
4. FOR FULL PRESSURE TO BRAKE PORT PISTON MUST BE FULLY STOPPED AGAINST HOUSING.
5. THIS DIMENSION INCLUDES APPROXIMATE PRE-TRAVEL AND MODULATION TRAVEL.

PERFORMANCE CHARACTERISTICS:

1. SYSTEM RELIEF VALVE SETTING MUST BE BETWEEN 1500-2500 PSI.
 2. ACCUMULATOR CHARGING HIGH LIMIT SET AT 1275-1325 PSI. ACCUMULATOR CHARGING LOW LIMIT SET AT 550-650 PSI. CHARGE RATE IS 2.0-3.2 GPM WITH 1000 PSI AT THE ACCUMULATOR PORT, 10 GPM FLOW INTO VALVE AND USING 14 CENTISTOKE OIL.
 4. MAXI
- WITH 14 CENTISTOKE OIL.
8. 100 PSI BRAKE LINE PRESSURE.
 9. INTERNAL FILTRATION IS 54 MICRON OR BETTER.
 10. EXTERNAL FILTRATION OF 10 MICRON OR BETTER IS RECOMMENDED.
 10. WEIGHT 17.5 LBS. APPROX.

INCH
[MILLIMETER]



TITLE FULL POWER BRAKE VALVE			
SCALE 1/2	CHECKED PM	PART NUMBER 06-460-894	REV B
DRN MAP 15-Mar-04	APP ENG PWB	CUSTOMER COPY	

COMPONENT AND SYSTEM RECOMMENDATIONS MADE BY MICO, INC. ARE BASED ON INFORMATION SUPPLIED BY POTENTIAL USER AND/OR SYSTEM DESIGNER. THE POTENTIAL USER AND/OR DESIGNER MUST MAKE FINAL ACCEPTANCE AND APPROVAL OF COMPONENTS AND SYSTEM AFTER TESTING PERFORMANCE ON AN ACTUAL APPLICATION FOR WHICH SYSTEM WAS DESIGNED.

MICO, INC. CLAIMS PROPRIETARY RIGHTS TO THE MATERIAL DISCLOSED IN THIS DOCUMENT. THIS DOCUMENT IS PROVIDED IN CONFIDENCE AND MAY NOT BE REPRODUCED OR DISCLOSED WITHOUT WRITTEN PERMISSION FROM MICO, INC. COPYRIGHT MICO, INC. ALL RIGHTS RESERVED.