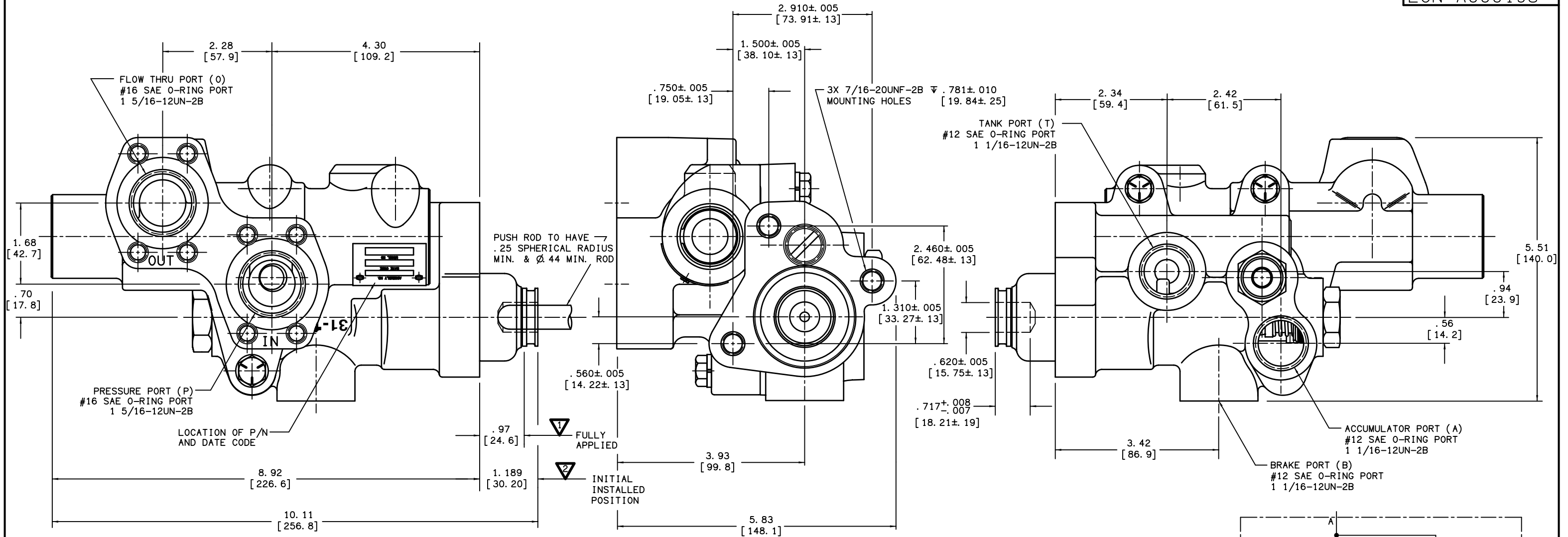


PART NUMBER  
06-460-852  
NPI OR ECN NO.  
ECN A000193



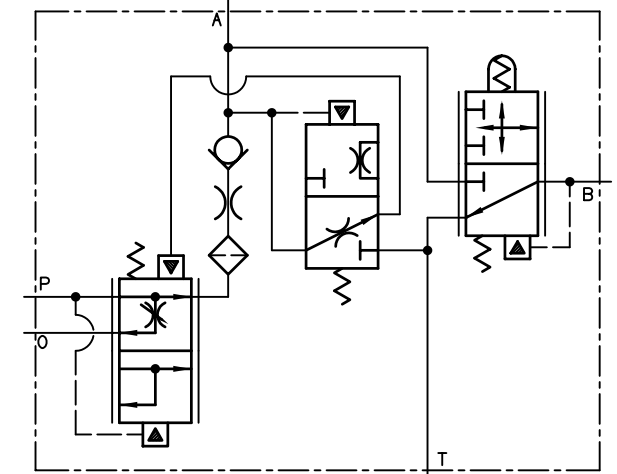
**NOTES:**

- FOR USE WITH MINERAL BASE HYDRAULIC OIL ONLY.
- DIMENSIONS WILL VARY SLIGHTLY BETWEEN UNITS AND ARE TO BE USED FOR REFERENCE PURPOSES ONLY.
- REPAIR KIT P/N 06-459-012.
- 1 FOR FULL PRESSURE TO BRAKE PORT PISTON MUST BE FULLY STOPPED AGAINST HOUSING.
- 2 THIS DIMENSION INCLUDES APPROXIMATE PRE-TRAVEL AND MODULATION TRAVEL.

**PERFORMANCE CHARACTERISTICS:**

- SYSTEM RELIEF VALVE SETTING MUST BE BETWEEN 1700-2500 PSI.
- ACCUMULATOR CHARGING HIGH LIMIT SET AT 1475-1525 PSI. ACCUMULATOR CHARGING LOW LIMIT SET AT 1150-1250 PSI.
- ACCUMULATOR CHARGE RATE IS .5-1.0 GPM WITH 1000 PSI AT THE ACCUMULATOR PORT, 10 GPM FLOW INTO VALVE AND USING 14 CENTISTOKE OIL.
- MAXIMUM BRAKE PRESSURE SETTING IS 1350-1500 PSI.
- RECOMMENDED SYSTEM FLOW IS 5 TO 35 GPM.
- FLOW THRU PRESSURE DROP IS APPROXIMATELY 20 PSI AT 35 GPM WITH 14 CENTISTOKE OIL.
- FORCE TO ACTUATE THE BRAKE VALVE IS APPROXIMATELY 300 LBS. AT 1500 PSI BRAKE LINE PRESSURE AND APPROXIMATELY 150 LBS. AT 500 PSI BRAKE LINE PRESSURE.
- INTERNAL FILTRATION IS 54 MICRON OR BETTER.
- EXTERNAL FILTRATION OF 10 MICRON OR BETTER IS RECOMMENDED.
- WEIGHT 17.5 LBS. APPROX.

INCH  
[ MILLIMETER ]



**MICO**

North Mankato, Minnesota U. S. A.

TITLE  
FULL POWER BRAKE VALVE

SCALE 1/2	CHECKED PM	PART NUMBER 06-460-852	REV G
DRN MAP 16-Jul-02	APP ENG PWB	CUSTOMER COPY	

COMPONENT AND SYSTEM RECOMMENDATIONS MADE BY MICO, INC. ARE BASED ON INFORMATION SUPPLIED BY POTENTIAL USER AND/OR SYSTEM DESIGNER. THE POTENTIAL USER AND/OR DESIGNER MUST MAKE FINAL ACCEPTANCE AND APPROVAL OF COMPONENTS AND SYSTEM AFTER TESTING PERFORMANCE ON AN ACTUAL APPLICATION FOR WHICH SYSTEM WAS DESIGNED.

MICO, INC. CLAIMS PROPRIETARY RIGHTS TO THE MATERIAL DISCLOSED IN THIS DOCUMENT. THIS DOCUMENT IS PROVIDED IN CONFIDENCE AND MAY NOT BE REPRODUCED OR DISCLOSED WITHOUT WRITTEN PERMISSION FROM MICO, INC. COPYRIGHT MICO, INC. ALL RIGHTS RESERVED.