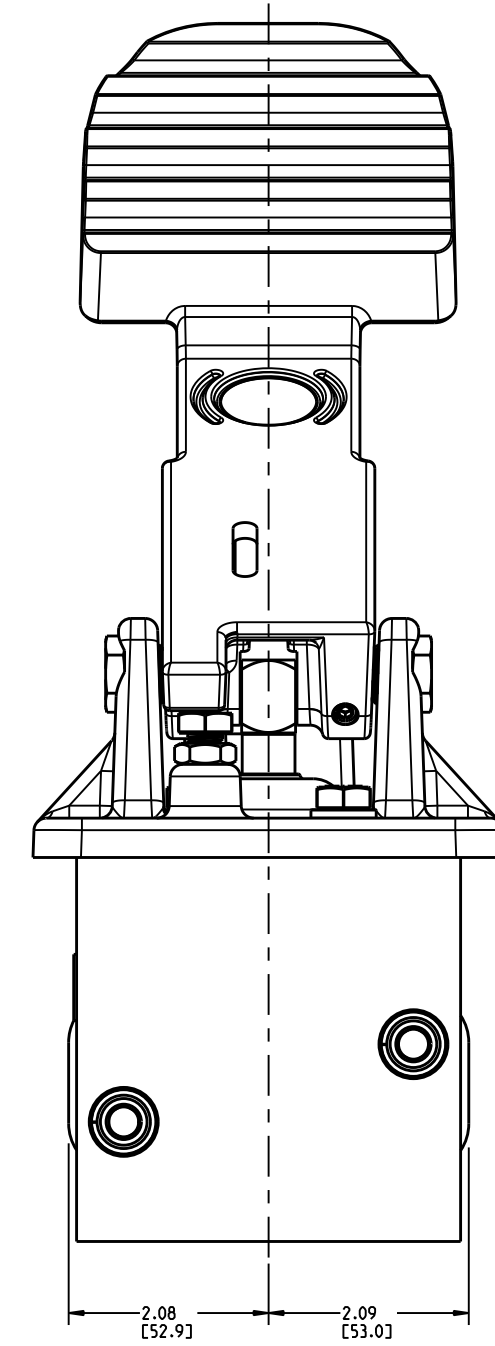
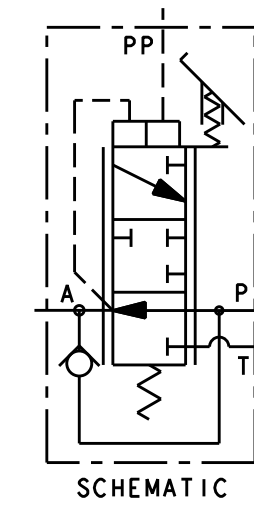
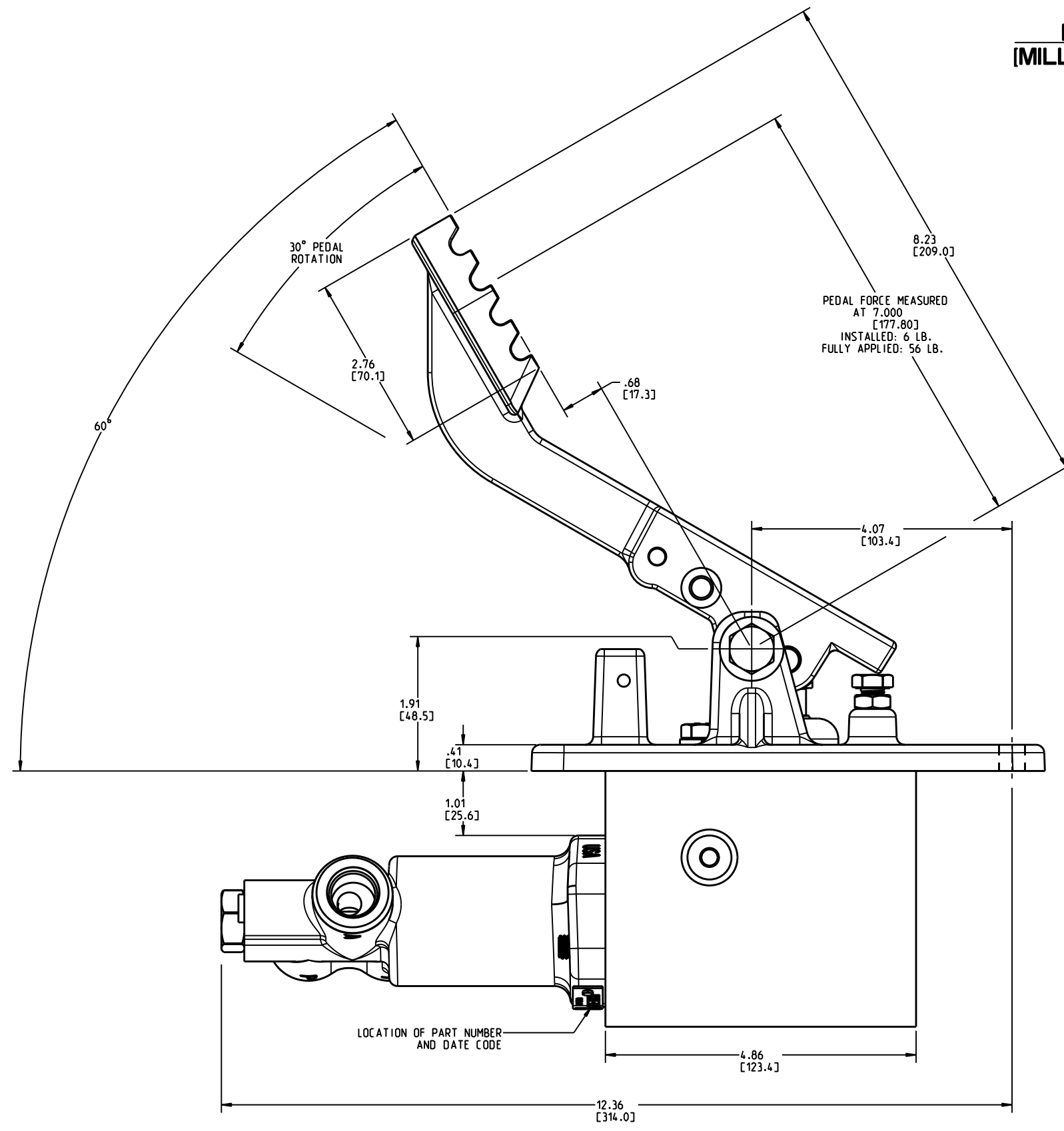
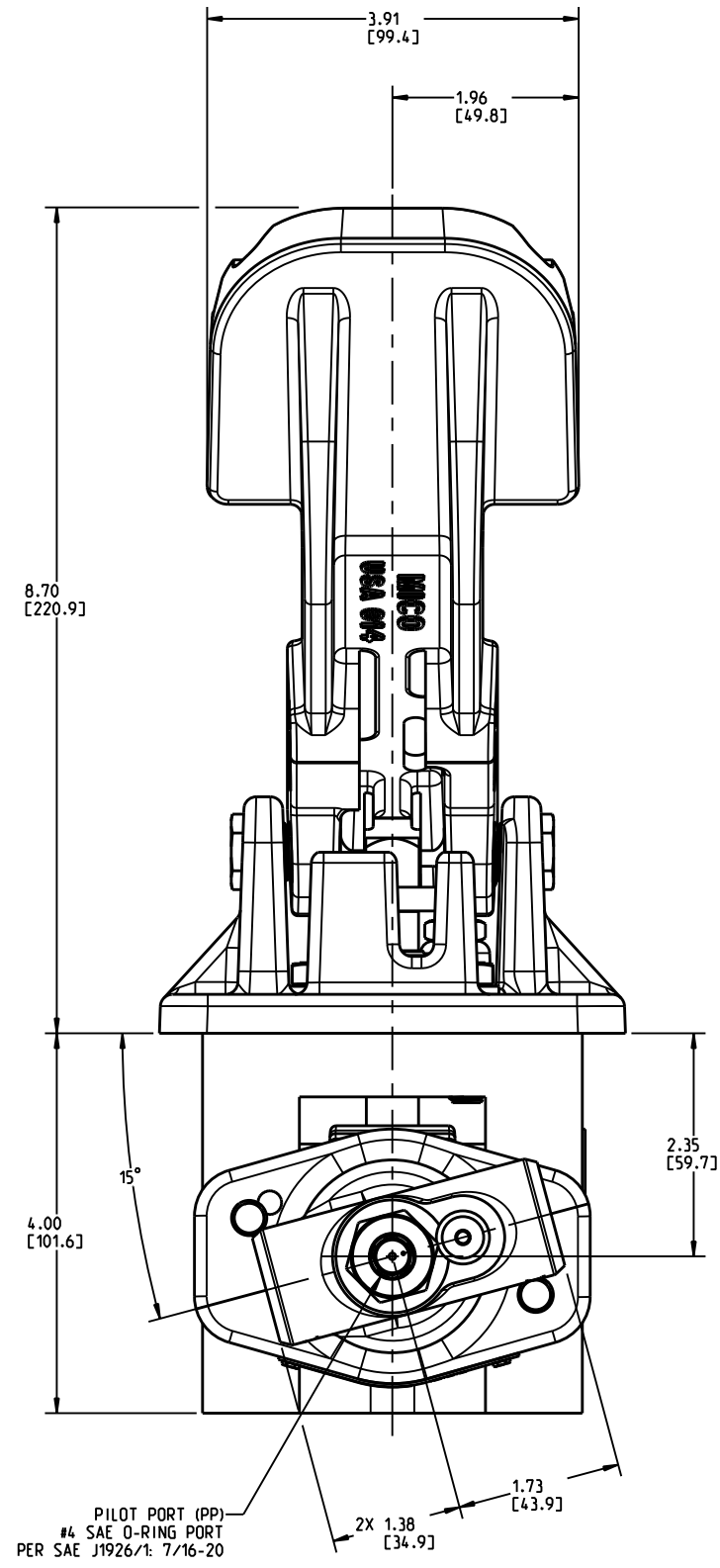
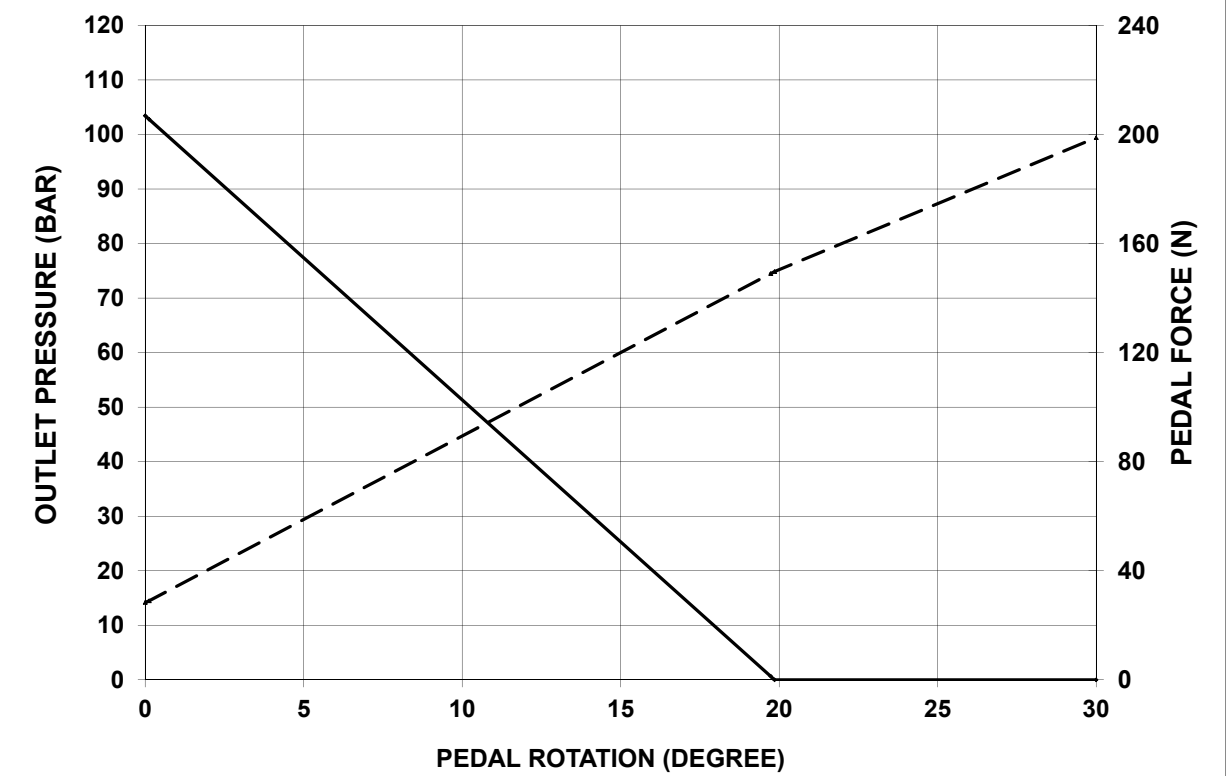
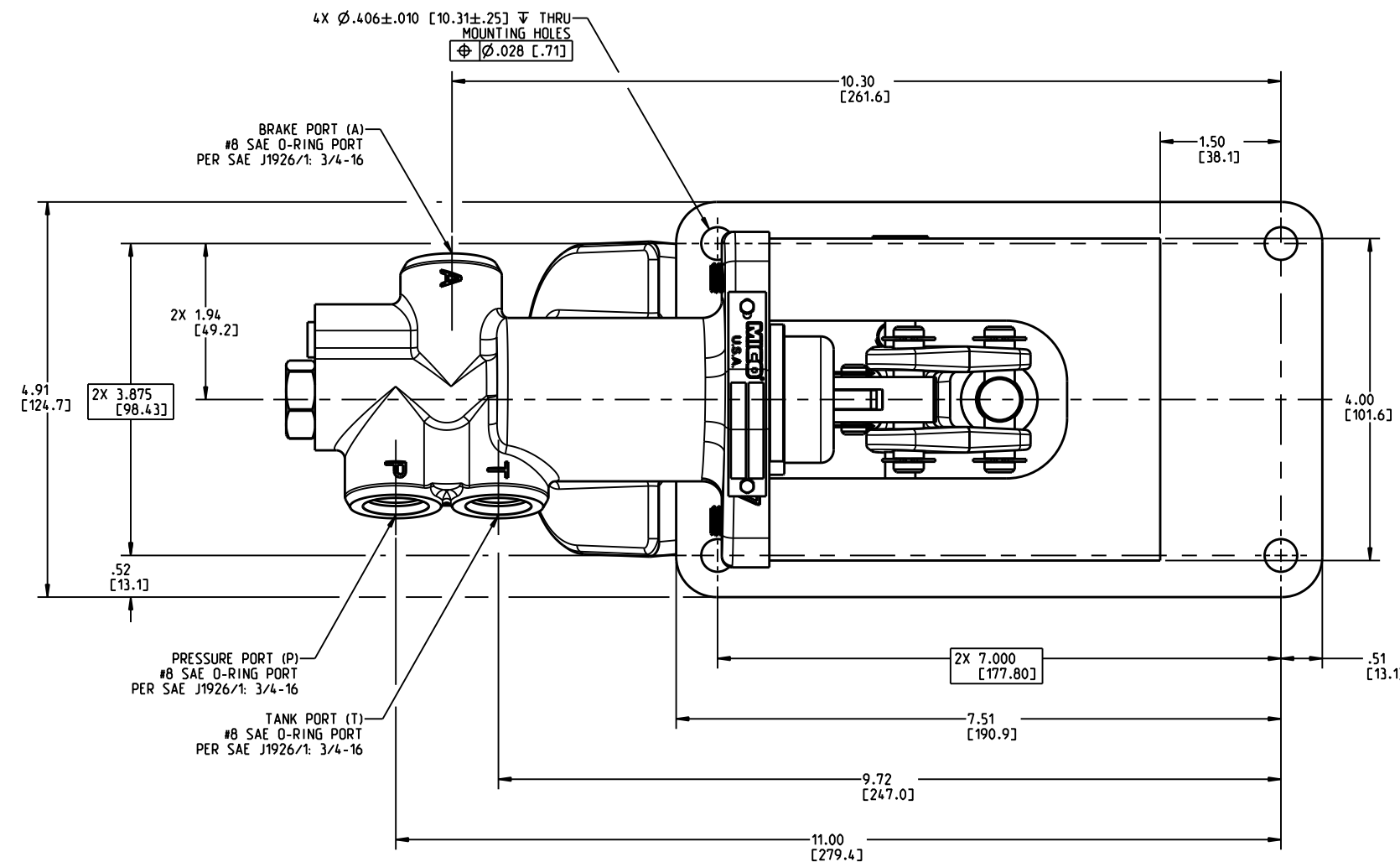
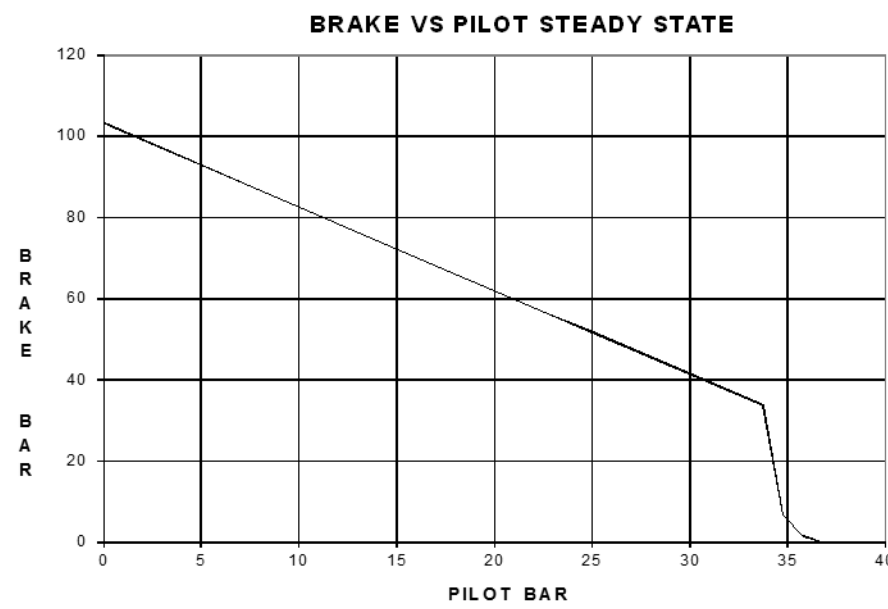


INCH
(MILLIMETER)



PERFORMANCE CHARACTERISTICS



NOTES:

- 1) FOR USE WITH FLUIDS COMPATIBLE WITH NITRILE SEALS.
- 2) DIMENSIONS MAY VARY BETWEEN UNITS AND ARE FOR REFERENCE PURPOSES ONLY. MILLIMETER VALUES MAY NOT BE AN EXACT CONVERSION OF INCH VALUES.
- 3) VALVE SURFACE COATING: SEMI-GLOSS BLACK POLYURETHANE ENAMEL PAINT.
- 4) VENT PILOT PORT (PP) TO TANK WHEN NOT IN USE.

PERFORMANCE CHARACTERISTICS:

- 1) VALVE PRESSURE SETTING IS $\pm 0.3 \pm 3$ BAR WITH 138 BAR AT P PORT.
- 2) RATED INLET PRESSURE IS 207 BAR.
- 3) OPERATING TEMPERATURE RANGE: -40 °F TO 225 °F.
- 4) HOLD OFF BRAKE APPLY PRESSURE FOR PILOT IS 68 ± 7 BAR.

SERVICE PARTS:

- 1) VALVE ASSEMBLY P/N 20-200-100.
- 2) REPAIR (VALVE SEAL REPLACEMENT) KIT P/N 06-400-150.

COMPONENT AND SYSTEM RECOMMENDATIONS MADE BY MICO, INC ARE BASED ON INFORMATION SUPPLIED BY POTENTIAL USER AND/OR SYSTEM DESIGNER. THE POTENTIAL USER AND/OR DESIGNER MUST MAKE FINAL ACCEPTANCE AND APPROVAL OF COMPONENTS AND SYSTEM AFTER TESTING PERFORMANCE ON AN ACTUAL APPLICATION FOR WHICH SYSTEM WAS DESIGNED.

MICO, INC CLAIMS PROPRIETARY RIGHTS TO THE MATERIAL DISCLOSED IN THIS DOCUMENT. THIS DOCUMENT IS PROVIDED IN CONFIDENCE AND MAY NOT BE REPRODUCED OR DISCLOSED WITHOUT WRITTEN PERMISSION FROM MICO, INC. COPYRIGHT MICO, INC. ALL RIGHTS RESERVED.

SCALE 0.500		TITLE REVERSE MODULATING VALVE		
DWN ZLH 2014-08-05	APVD PROD ENGRG DPD 2014-08-29	SIZE C	DRAWING NUMBER 03-460-458	REV 2
X NO X09-3359-030	APVD ENGRG STR 2014-08-28	CUSTOMER COPY		

MICO
North Mankato, Minnesota USA