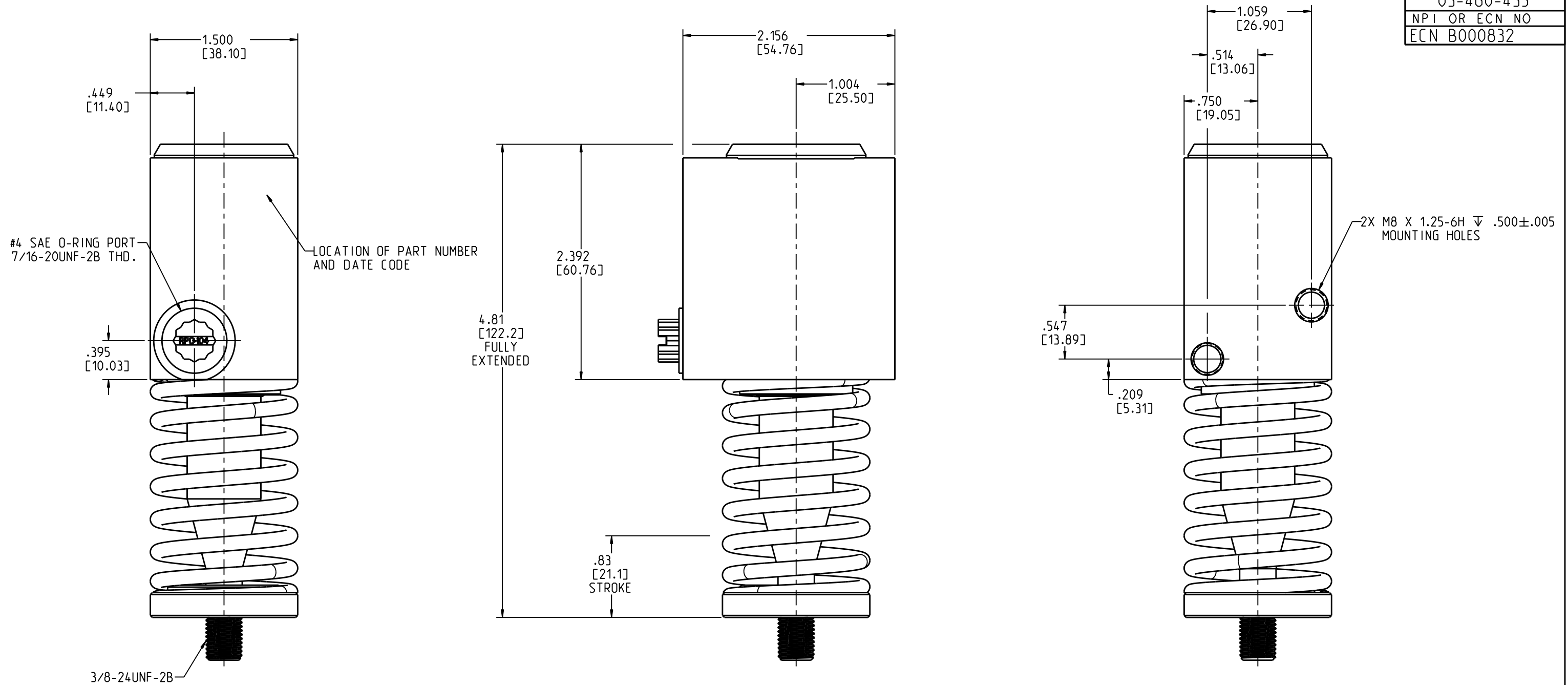


DRAWING NUMBER
03-460-435
NPI OR ECN NO
ECN B000832



NOTES:

- 1) FOR USE WITH MINERAL BASE HYDRAULIC FLUID ONLY.
- 2) DIMENSIONS MAY VARY BETWEEN UNITS AND ARE FOR REFERENCE PURPOSES ONLY. MILLIMETER VALUES MAY NOT BE AN EXACT CONVERSION OF INCH VALUES.
- 3) 1500 PSI MAX. INPUT PRESSURE
- 4) APPROXIMATELY 150 PSI TO FULLY RETRACT PISTON
- 5) APPROXIMATE STROKE .83[21.1]

INCH
[MILLIMETER]



COMPONENT AND SYSTEM RECOMMENDATIONS MADE BY MICO, INC ARE BASED ON INFORMATION SUPPLIED BY POTENTIAL USER AND/OR SYSTEM DESIGNER. THE POTENTIAL USER AND/OR DESIGNER MUST MAKE FINAL ACCEPTANCE AND APPROVAL OF COMPONENTS AND SYSTEM AFTER TESTING PERFORMANCE ON AN ACTUAL APPLICATION FOR WHICH SYSTEM WAS DESIGNED.		MICO, INC CLAIMS PROPRIETARY RIGHTS TO THE MATERIAL DISCLOSED IN THIS DOCUMENT. THIS DOCUMENT IS PROVIDED IN CONFIDENCE AND MAY NOT BE REPRODUCED OR DISCLOSED WITHOUT WRITTEN PERMISSION FROM MICO, INC. COPYRIGHT MICO, INC. ALL RIGHTS RESERVED.	
SCALE 1.000	TITLE ACTUATOR		
DWN JRA 2009-02-17	APVD PROD ENGRG DPD 2009-02-24	SIZE B	DRAWING NUMBER 03-460-435
X NO X7859-01	APVD ENGRG BSW 2009-02-23	CUSTOMER COPY	REV B 0 1