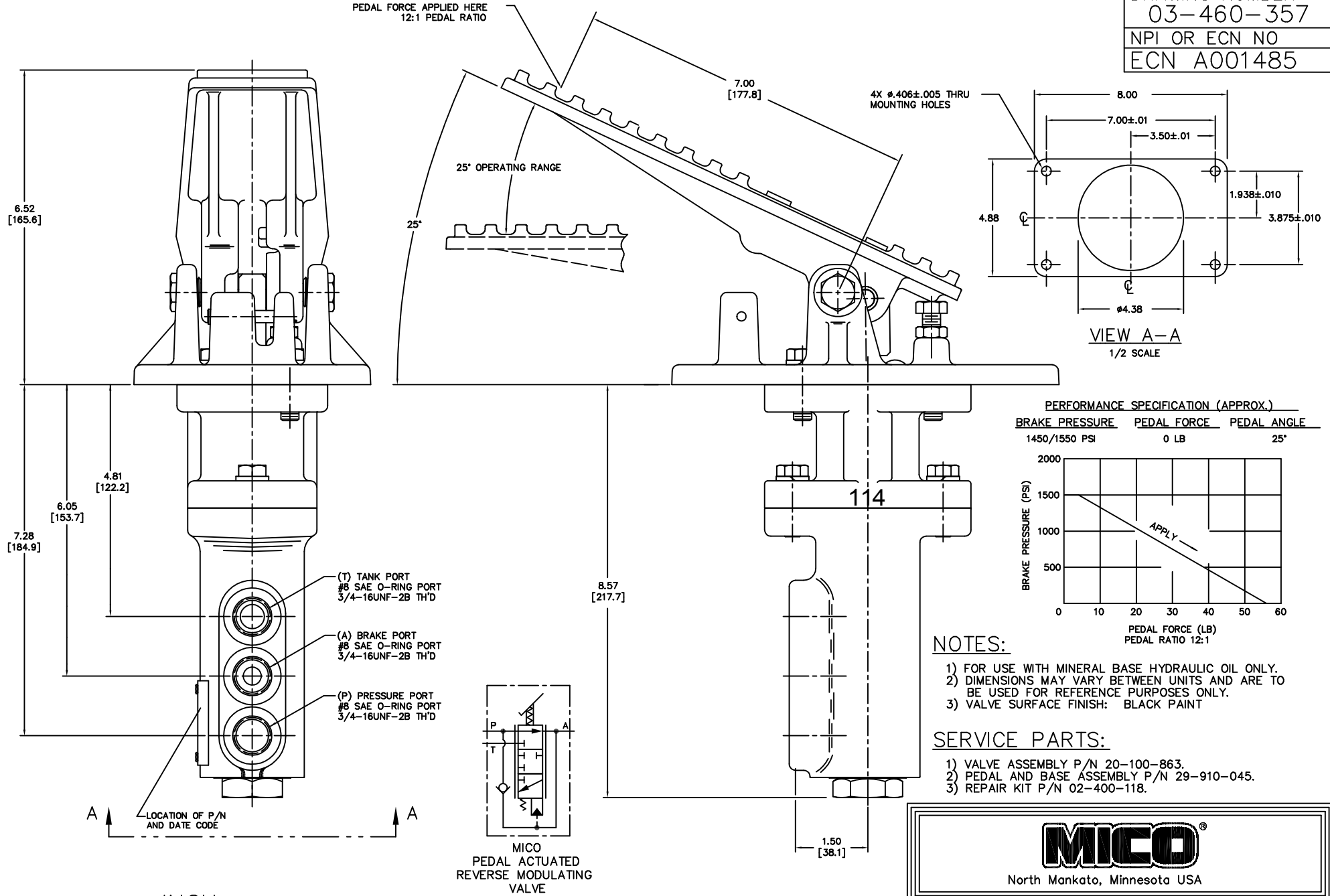


DRAWING NUMBER  
03-460-357  
NPI OR ECN NO  
ECN A001485



NOTES:

- 1) FOR USE WITH MINERAL BASE HYDRAULIC OIL ONLY.
- 2) DIMENSIONS MAY VARY BETWEEN UNITS AND ARE TO BE USED FOR REFERENCE PURPOSES ONLY.
- 3) VALVE SURFACE FINISH: BLACK PAINT

SERVICE PARTS:

- 1) VALVE ASSEMBLY P/N 20-100-863.
- 2) PEDAL AND BASE ASSEMBLY P/N 29-910-045.
- 3) REPAIR KIT P/N 02-400-118.

**MICO**<sup>®</sup>

North Mankato, Minnesota USA

INCH  
[MILLIMETER]

COMPONENT AND SYSTEM RECOMMENDATIONS MADE BY MICO, INC ARE BASED ON INFORMATION SUPPLIED BY POTENTIAL USER AND/OR SYSTEM DESIGNER. THE POTENTIAL USER AND/OR DESIGNER MUST MAKE FINAL ACCEPTANCE AND APPROVAL OF COMPONENTS AND SYSTEM AFTER TESTING PERFORMANCE ON AN ACTUAL APPLICATION FOR WHICH SYSTEM WAS DESIGNED.

MICO, INC CLAIMS PROPRIETARY RIGHTS TO THE MATERIAL DISCLOSED IN THIS DOCUMENT. THIS DOCUMENT IS PROVIDED IN CONFIDENCE AND MAY NOT BE REPRODUCED OR DISCLOSED WITHOUT WRITTEN PERMISSION FROM MICO, INC. COPYRIGHT MICO, INC. ALL RIGHTS RESERVED.

SCALE	TITLE	SIZE	DRAWING NUMBER	REV
NONE	REVERSE MODULATING VALVE			
DWN JRA 2015-12-04	APVD PROD ENGRG MWM 2015-12-07	A	03-460-357	B
X NO 06-1212	APVD ENGRG JC 2015-12-04		CUSTOMER COPY	