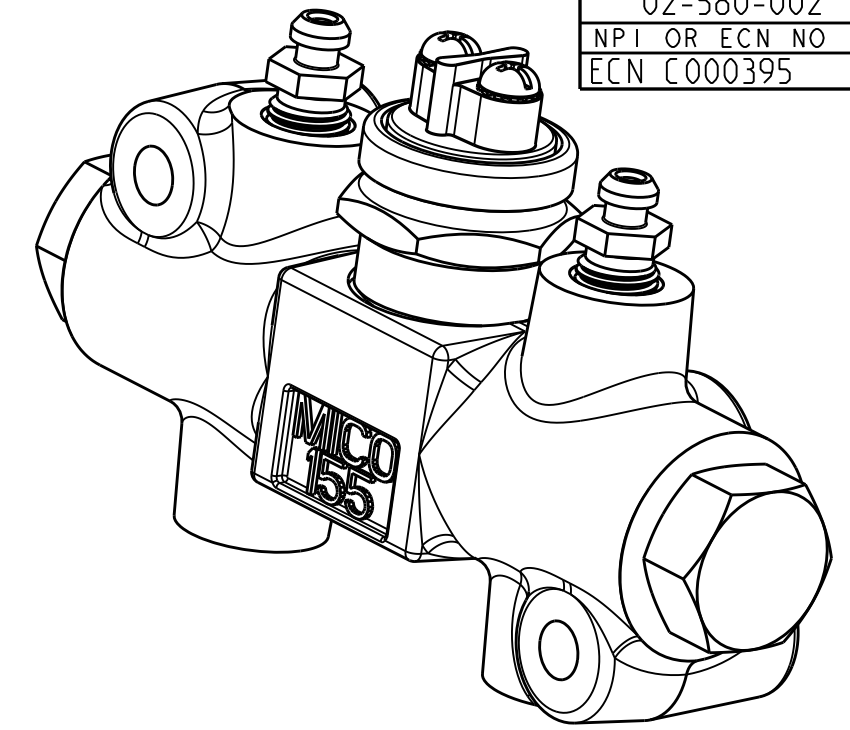
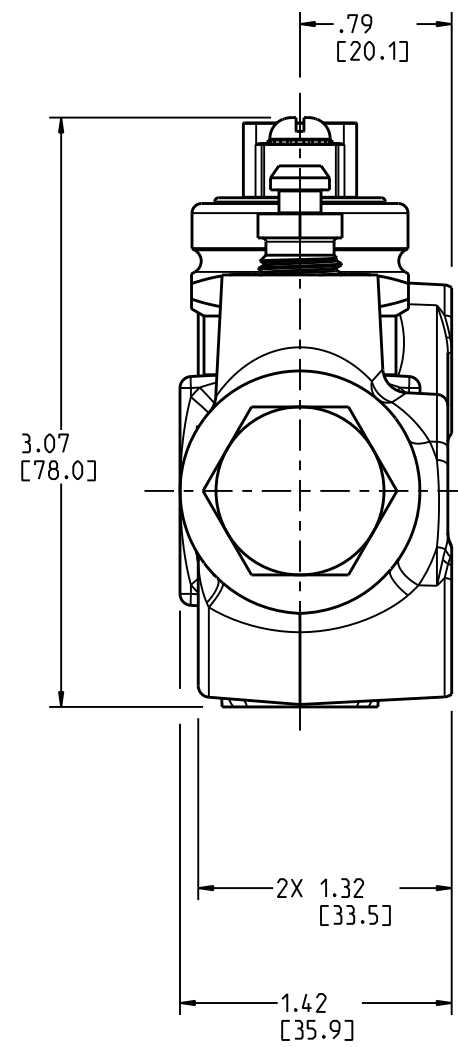
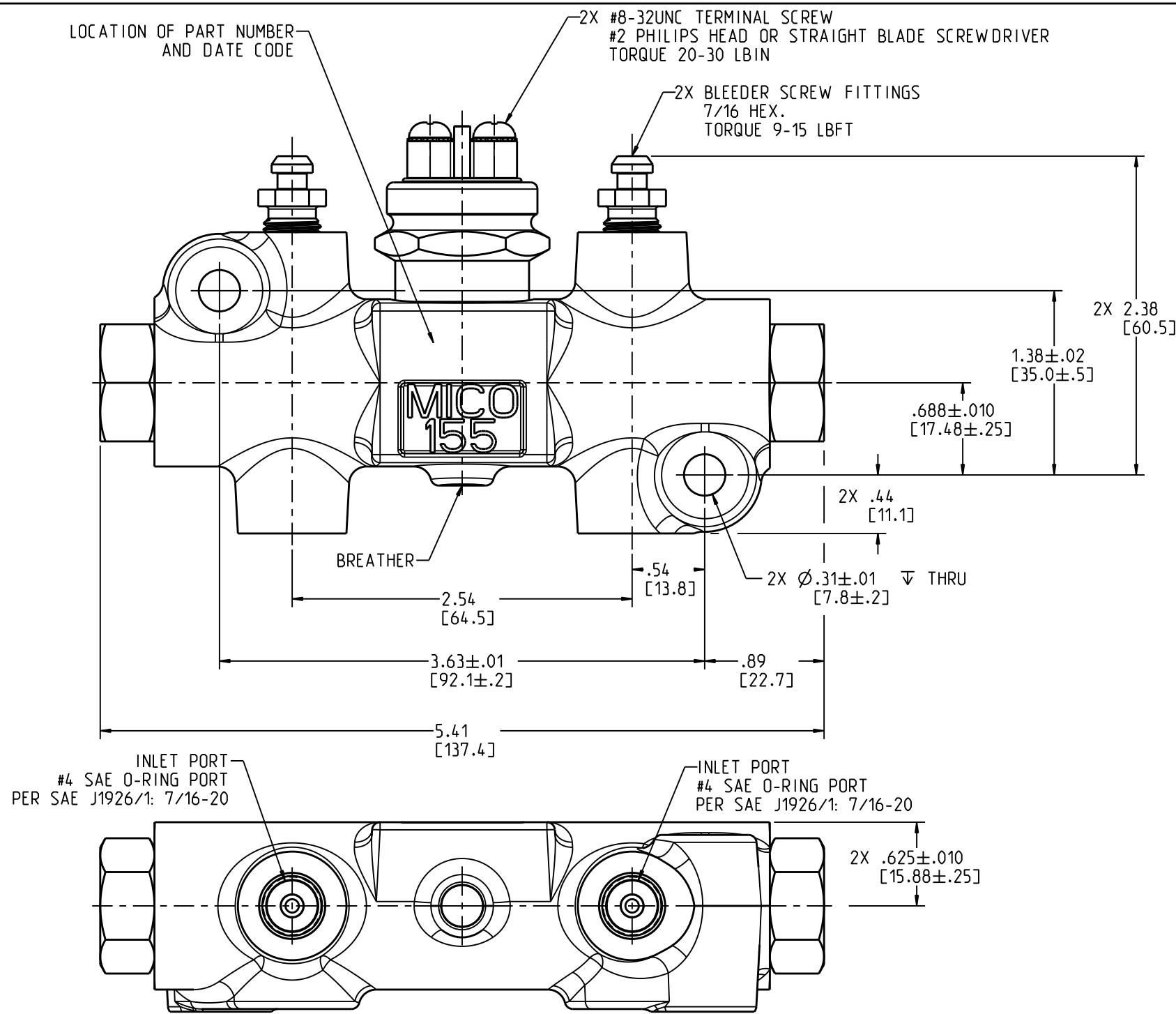
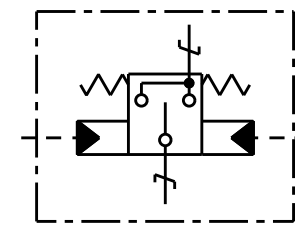


DRAWING NUMBER  
02-580-002  
NPI OR ECN NO  
ECN C000395



**NOTES:**

- 1) FOR USE WITH MINERAL BASE HYDRAULIC OIL ONLY.
- 2) DIMENSIONS MAY VARY BETWEEN UNITS AND ARE TO BE USED FOR REFERENCE PURPOSES ONLY. MILLIMETER VALUES MAY NOT BE AN EXACT CONVERSION OF INCH VALUES.
- 3) MAXIMUM SWITCH CURRENT RATING: 35 AMPS @ 12 VDC - 20 AMPS @ 24 VDC
- 4) OPERATING PRESSURE DIFFERENTIAL IS 300±100 PSI THE LOWER THE INLET PRESSURES, THE LOWER THE OPERATING PRESSURE DIFFERENTIAL.
- 5) MAXIMUM OPERATING PRESSURE 3000 PSI
- 6) SWITCH IS NORMALLY OPEN AND ISOLATED (NOT INTERNALLY GROUNDING).
- 7) REPAIR KIT PART NUMBER 02-700-005.
- 8) INGRESS PROTECTION: IP 50
- 9) MOUNTING ORIENTATION: MOUNT WITH BLEEDER SCREWS FACING UPWARD.
- 10) SURFACE FINISH: NONE
- 11) NORMAL OPERATING TEMPERATURE: -30°F TO 250°F



**INCH**  
**[MILLIMETER]**



COMPONENT AND SYSTEM RECOMMENDATIONS MADE BY MICO, INC ARE BASED ON INFORMATION SUPPLIED BY POTENTIAL USER AND/OR SYSTEM DESIGNER. THE POTENTIAL USER AND/OR DESIGNER MUST MAKE FINAL ACCEPTANCE AND APPROVAL OF COMPONENTS AND SYSTEM AFTER TESTING PERFORMANCE ON AN ACTUAL APPLICATION FOR WHICH SYSTEM WAS DESIGNED.

MICO, INC CLAIMS PROPRIETARY RIGHTS TO THE MATERIAL DISCLOSED IN THIS DOCUMENT. THIS DOCUMENT IS PROVIDED IN CONFIDENCE AND MAY NOT BE REPRODUCED OR DISCLOSED WITHOUT WRITTEN PERMISSION FROM MICO, INC. COPYRIGHT MICO, INC. ALL RIGHTS RESERVED.

SCALE 1.000	TITLE DIFFERENTIAL PRESSURE SWITCH		
DWN JRA 2010-09-03	APVD PROD ENGRG DPD 2010-09-16	SIZE B	DRAWING NUMBER 02-580-002
X NO X2373	APVD ENGRG BSW 2010-09-07		REV F
			CUSTOMER COPY